

# LEADING THE CHARGE

EXPLORING NORTH AMERICA'S TOP COPPER DISTRICTS

*New Copper discovery at 100% owned Kendal Project*



Strategically  
partnered with:

**Teck**

# Cautionary Statement

Investors are cautioned that, except for statements of historical fact, certain information contained in this document includes “forward-looking information”, with respect to a performance expectation for Red Canyon Resources. Such forward-looking statements are based on current expectations, estimates and projections formulated using assumptions believed to be reasonable and involving a number of risks and uncertainties which could cause actual results to differ materially from those anticipated. Such factors include, without limitation, fluctuations in foreign exchange markets, the price of commodities in both the cash market and futures market, changes in legislation, taxation, controls and regulations of national and local governments and political and economic developments in Canada, the United States and other countries where the company carries-out or may carry-out business in the future, the availability of future business opportunities and the ability to successfully integrate acquisitions or operational difficulties related to technical activities of mining and reclamation, the speculative nature of exploration and development of mineral deposits located, including risks in obtaining necessary licenses and permits, reducing the quantity or grade of reserves, adverse changes in credit ratings, and the challenge of title. The Company does not undertake an obligation to update publicly or revise any forward-looking statements or information, whether as a result of new information, future events or otherwise, unless so required by applicable securities laws. Some of the results reported are historical and may not have been verified by the Company.

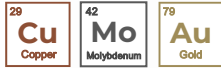
All technical information in this presentation have been reviewed and approved by Wendell Zerb, P. Geol. A qualified person as defined by National Instrument 43-101.

\*Copper Equivalent (CuEq) shown within are calculated on a basis of US\$ 3.75/lb for Cu, US\$ 25/oz for Ag and US\$ 27.5/lb for Mo, with 80% metallurgical recoveries assumed for all metals (ie no assumptions have been made for recoveries at this stage). The formula is:  $CuEq. = Cu \% + (Ag \text{ grade in g/t} \times (Ag \text{ recovery} / Cu \text{ recovery}) \times [Ag \text{ price} \div 31.1] / [Cu \text{ price} \times 2204.6] + (Mo \text{ grade in \%} \times (Mo \text{ recovery} / Cu \text{ recovery}) \times [Mo \text{ price} \times 2200] / [Cu \text{ price} \times 2204.6])$ .

## GLOBAL ALLIANCE OF EXPLORATION COMPANIES



Teck Strategic Investment



CSE: **REDC**  
OTCQB: **REDRF**

REDCANYONRESOURCES.COM



Newmont Earn-in Partner

OceanaGold Earn-in Partner

Centerra Gold Earn-in Partner



CSE: **HWG**  
OTCQX: **HWAUF**

HEADWATERGOLD.COM



### CONDUIT NICKEL



CONDUITNICKEL.COM



TSX-V: **FINX**

FINEXMETALS.NET



AngloGold Ashanti Earn-in Partner



CSE: **AUCU**  
OTCQB: **AUCUF**  
FSE: **5VJ**

INFLECTIONRESOURCES.COM

# Copper - The Most Critical Metal

## Large, diverse market - EV, AI, infrastructure

- not impacted, manipulated like specialty metals

## It is the next, most globally significant commodity

- Markets will embrace: Producers, developers and explorers of copper

## There is no viable substitute

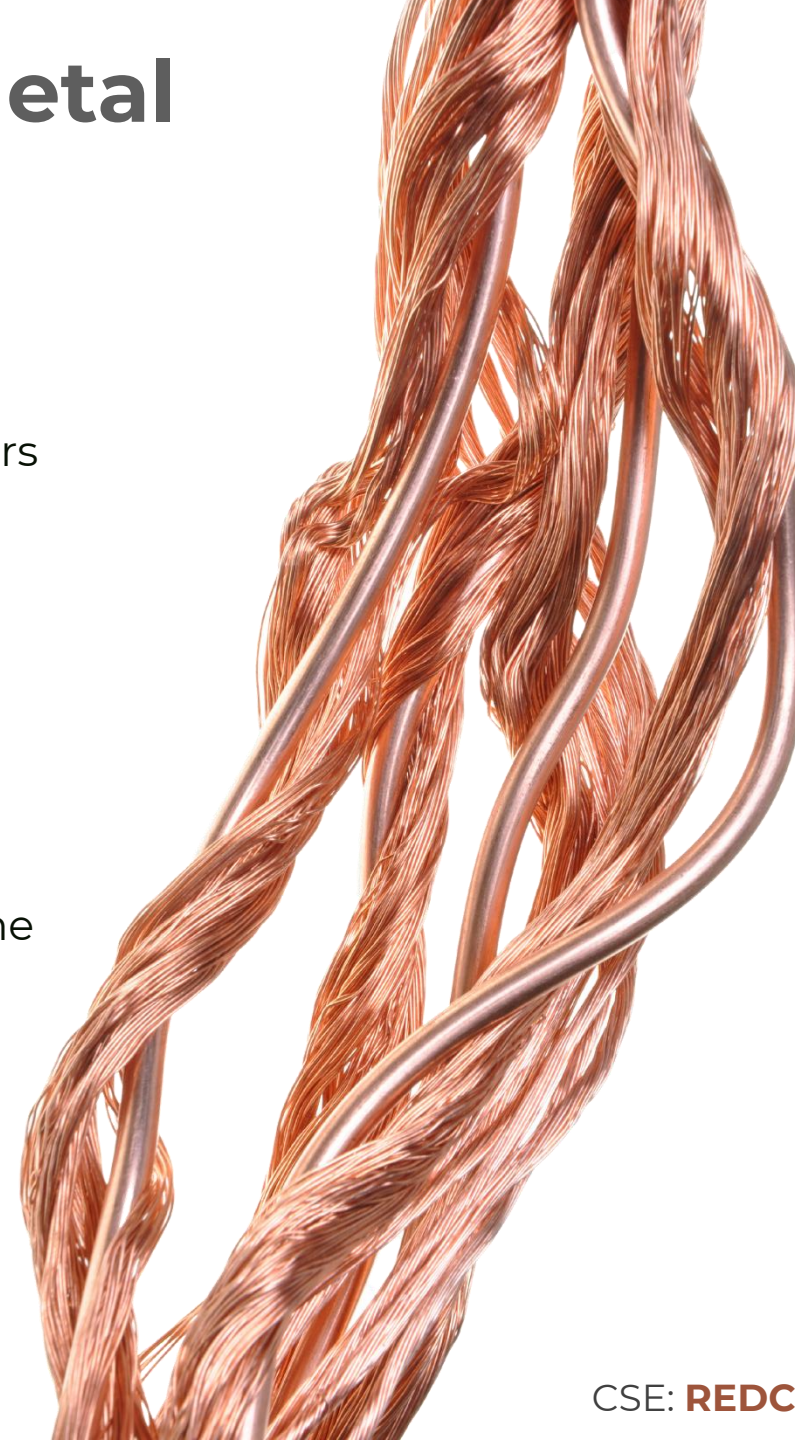
- If there is electrification – the world needs more copper

## And...it is set to be 6Mt in deficit by 2035\*

- The 10 largest Cu mines produce 4.7Mt of copper annually
  - 10+ new world class copper mines need to come online before 2030 – this will not happen

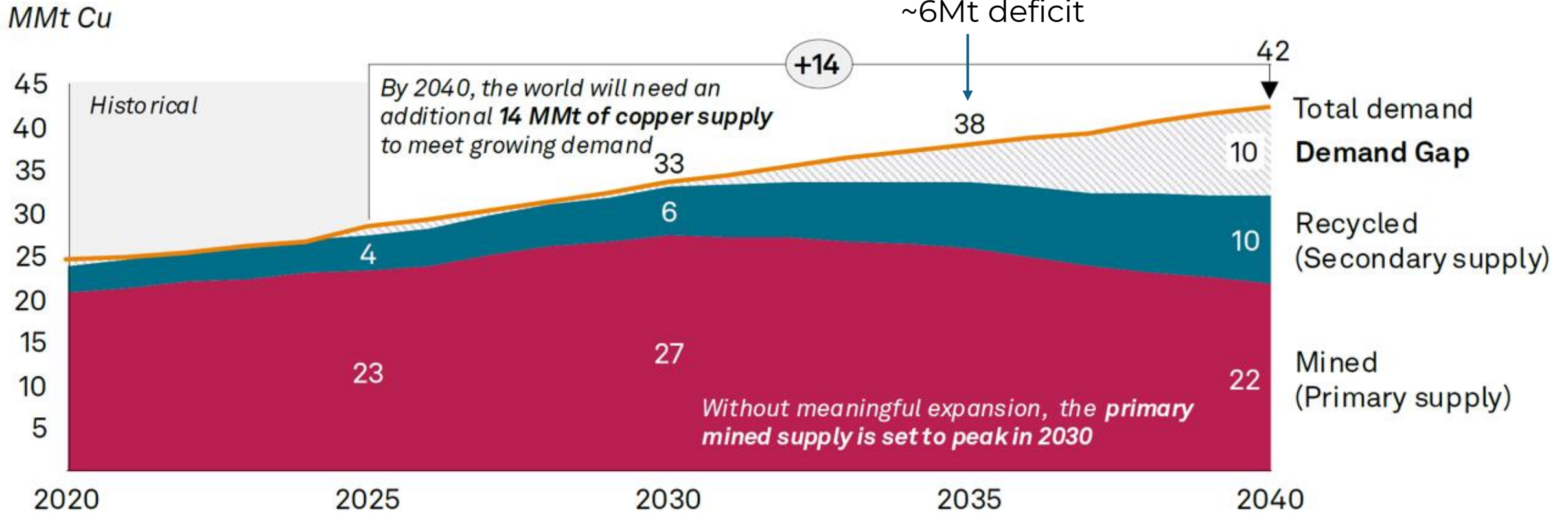
Relating to copper supply tightness and demand growth:

“Copper is a *crucial* metal ... with strong demand growth, and supply is becoming increasingly difficult to release ... supply tightness will only intensify.” **Mike Henry CEO, BHP**



# Copper - The Most Critical Metal

Total copper market balance (2020–2040)

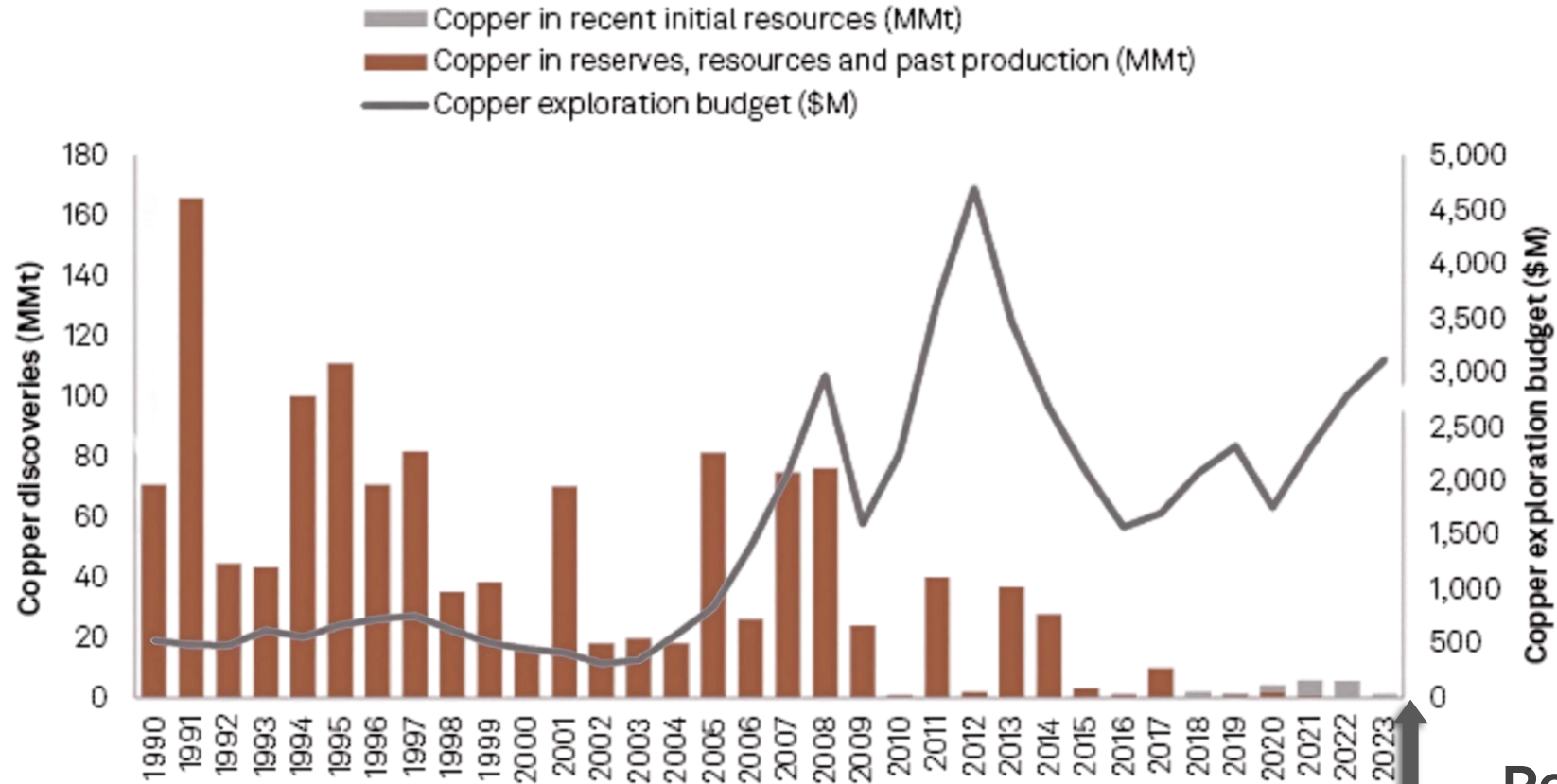


On bringing on more copper supply: “You’re looking at this situation with the market being so tight, and there are not obvious actionable projects that can fill that gap ... That situation is causing us to be more innovative “

**Kathleen Quirk CEO, Freeport-McMoRan**

# The Significance of a New Copper Discovery

## Major copper discoveries, 1990–2023



**Red Canyon's Kendal Discovery**

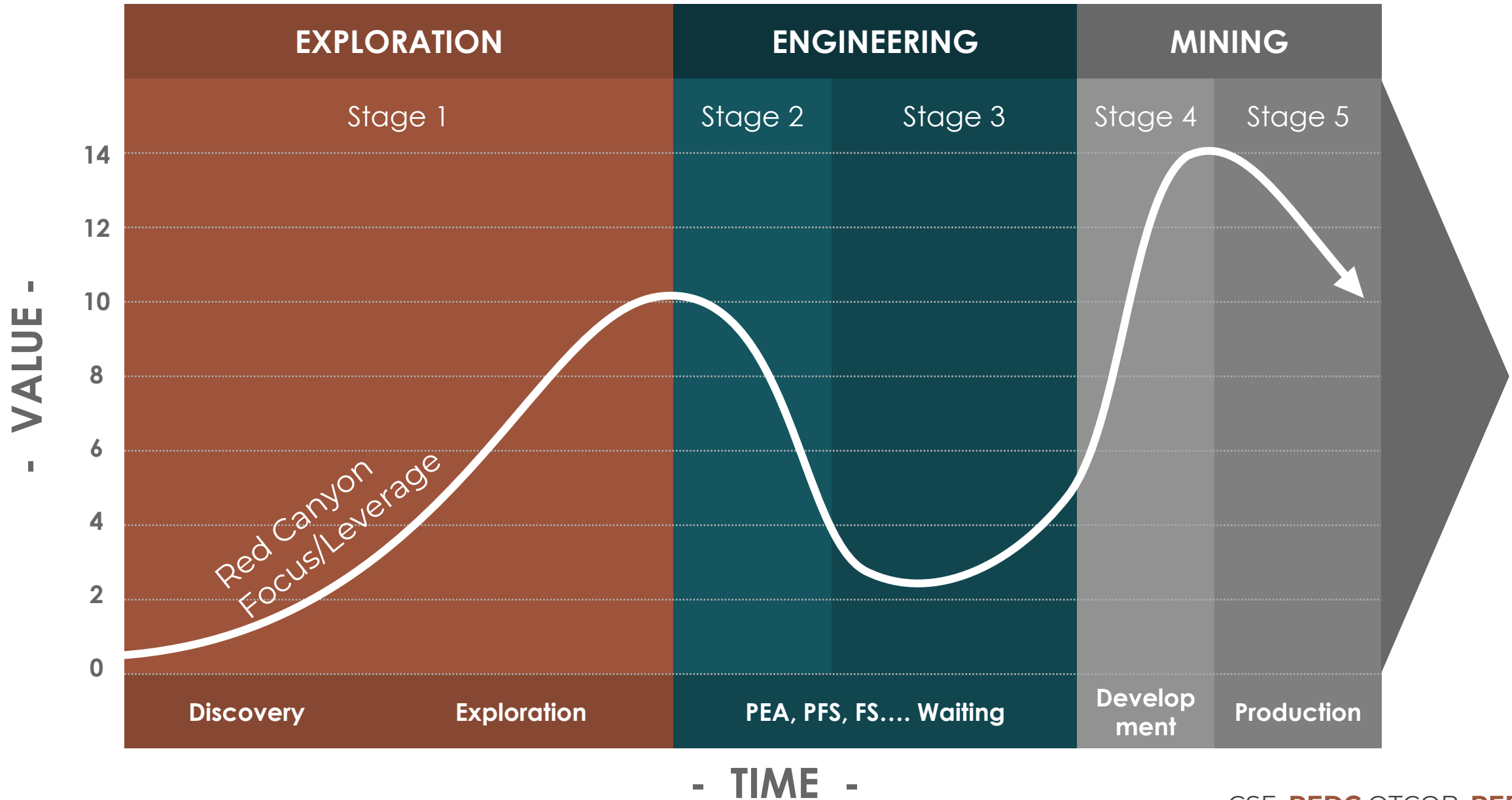
As of June 11, 2024.

MMt = million metric tons; \$/t = dollars per metric ton.

Source: S&P Global Market Intelligence.

© 2024 S&P Global.

# Mineral Exploration to Mining Life Cycle



# Small Cap Cycles – Now is the time



# Capital Structure

**74.4M**

Outstanding Shares

**21.8M**

Management

**14.4M\***

Warrants

**4.5M\***

Options

**\$14.5M\***

Market Cap

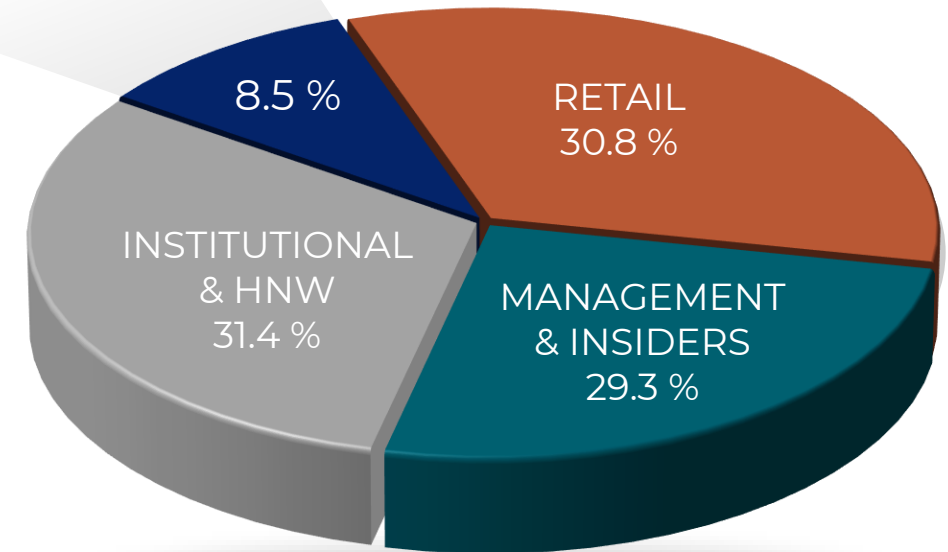
**~\$4.2M\***

Cash

\* As of March 26, 2026

**Teck**

~60% of shares  
Held by 10 largest  
shareholders



# Team



## **Wendell Zerb** BSc, P. Geol | **Chairman & CEO**

- 30+ years of combined experience in capital markets, mining and mineral exploration / development
- Former President and CEO of Exeter Resource Corp, bought by Goldcorp/Barrick in 2017

## **Caleb Stroup** MSc, AIPG | **US Technical Lead & Director**

- Geologist with over 15 years experience, focused expertise in the Western US
- Former senior Geologist for Kinross Gold; currently CEO of Headwater Gold

## **Alistair Waddell** BSc (Hons.), MAusIMM | **Director**

- 30+ years of diverse international mineral exploration experience
- Former VP Greenfields Exploration for Kinross Gold Corp.
- CEO of Inflection Resources and Chairman of Headwater Gold

## **Cecil R. Bond** CPA, CA | **Director**

- Chartered Professional Accountant with over 25 years of global experience in the junior resource and mining industry, serving as a director or senior executive of companies listed on the TSX, TSX-V, ASX, AIM and NYSE markets.

## **Dr. Craig J.R. Hart** PhD, FSEG, FGAC | **Chief Geoscientist**

- Internationally recognized exploration geoscientist; specialized in Cu - Au porphyry and Intrusive hosted Gold systems
- Former Director of MDRU-Mineral Deposit Research Unit at the University of British Columbia (UBC)
- Chairman of Snowline Gold

## **Christopher J. Wild** P. Eng | **Exploration Manager**

- 35+ years experience in mining and mineral exploration
- Former Project Manager/Chief Geologist for KGHM, Ajax Copper Project; Chief Mine Geologist for Imperial Metals Mount Polley Copper-Gold Mine.

## **Lauren M. Roberts** PE | **Director**

- Professional Mining Engineer with over 30 years of experience in the global mining industry.
- Previously held senior positions for Kinross Gold, Barrick Gold and Hecla Mining

## **Sandra Wong** CPA, CGA | **CFO & Corporate Secretary**

- Chartered Professional Accountant with 20+ years of experience with TSXV and CSE listed companies

## **Dr. Alan Wilson |** PhD, CGEOL **Technical Advisor and Principal Consultant**

- Over 30 years experience, including senior roles with a number of the world's largest mining companies
- Expert in Alkalic Copper Gold porphyry systems

## **Tero Kosonen |** MSc. Economics **Advisor**

- Co-Founder of NewQuest Capital, a private equity/venture capital group, non-Executive Director for Inflection Resources & Headwater Gold. And Chairman of Finex Metals.
- 25 years of experience in management roles, entrepreneurial ventures & investments in natural resources.

## **Dr. Dan Core |** PhD **Technical Advisor**

- Co-founder of Fathom Geophysics, which specializes in geophysical and geoscience processing and targeting services to the mineral sector.
- Dan has extensive experience targeting for an array of mineral deposit types, including copper porphyry systems

## **Yale Simpson |** BAsC. **Corporate Advisor**

- 35 years experience as a senior geologist, exploration manager, CEO, and Chairman of companies involved in Australia, Africa, Canada, Eastern Europe and South America
- Co-Chairman of Extorre Gold Mines Ltd and Exeter Resource Corp., both acquired by major mining companies

# North-American Copper-Gold

## British Columbia

Premier Copper-Gold district with active large-scale mining operations



## Western United States

Multiple Copper jurisdictions with world-class operating mines



# Kendal Project

STRATEGIC CLAIM POSITION

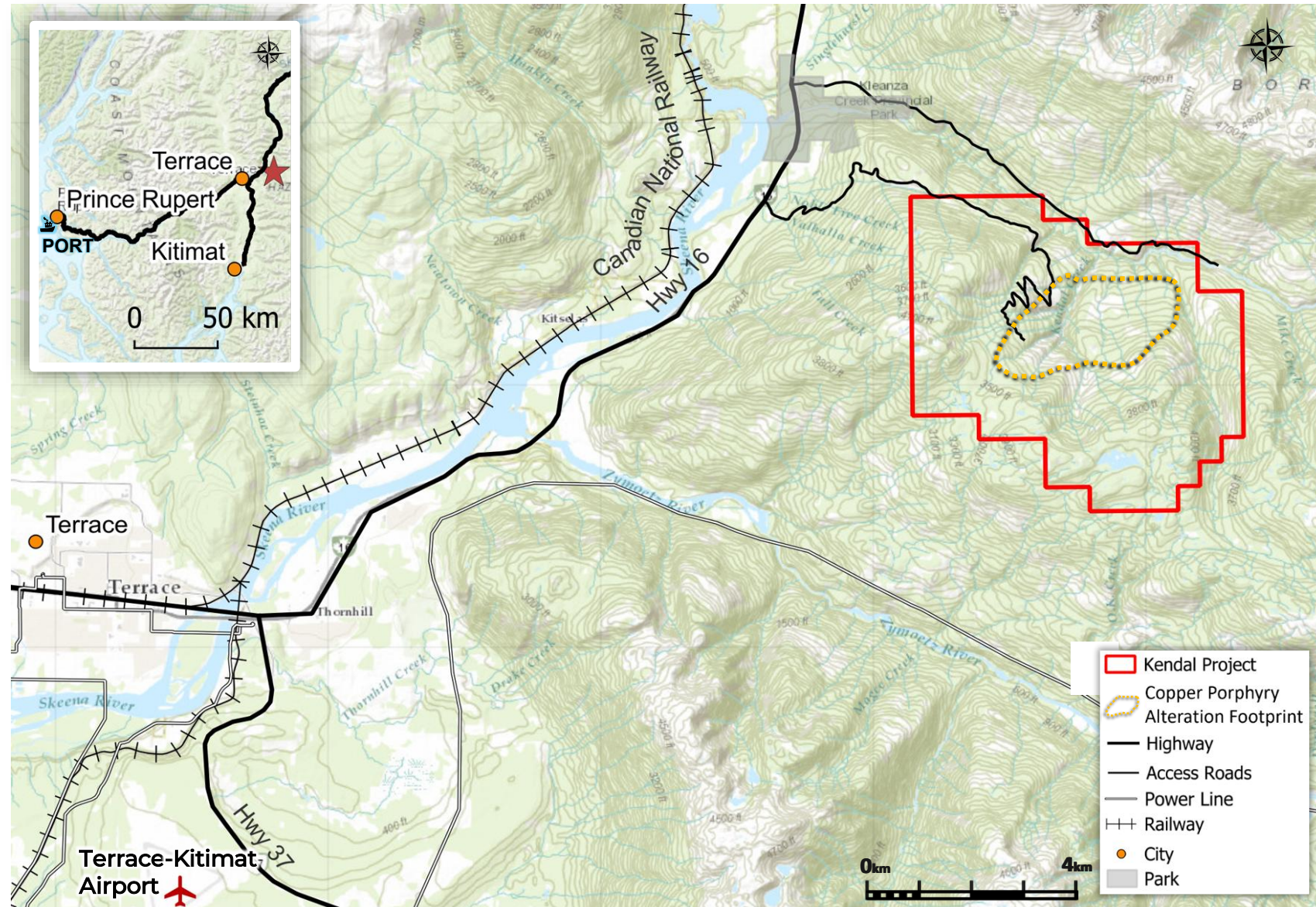
2,738 HECTARES

100% OWNED

Company recently discovered large scale copper porphyry system

2024/25 drill program's identified interpreted lower grade halo of a large copper porphyry system. Bulk of 4 km by 3 km system remains untested.

Excellent infrastructure offers significant advantages to improve margin potential



# Kendal Project

3.0 km

Significant zone of highly altered volcanic and porphyritic intrusive rocks associated with widespread Cu mineralization

Zone containing breccias and high-grade hypogene chalcocite veins

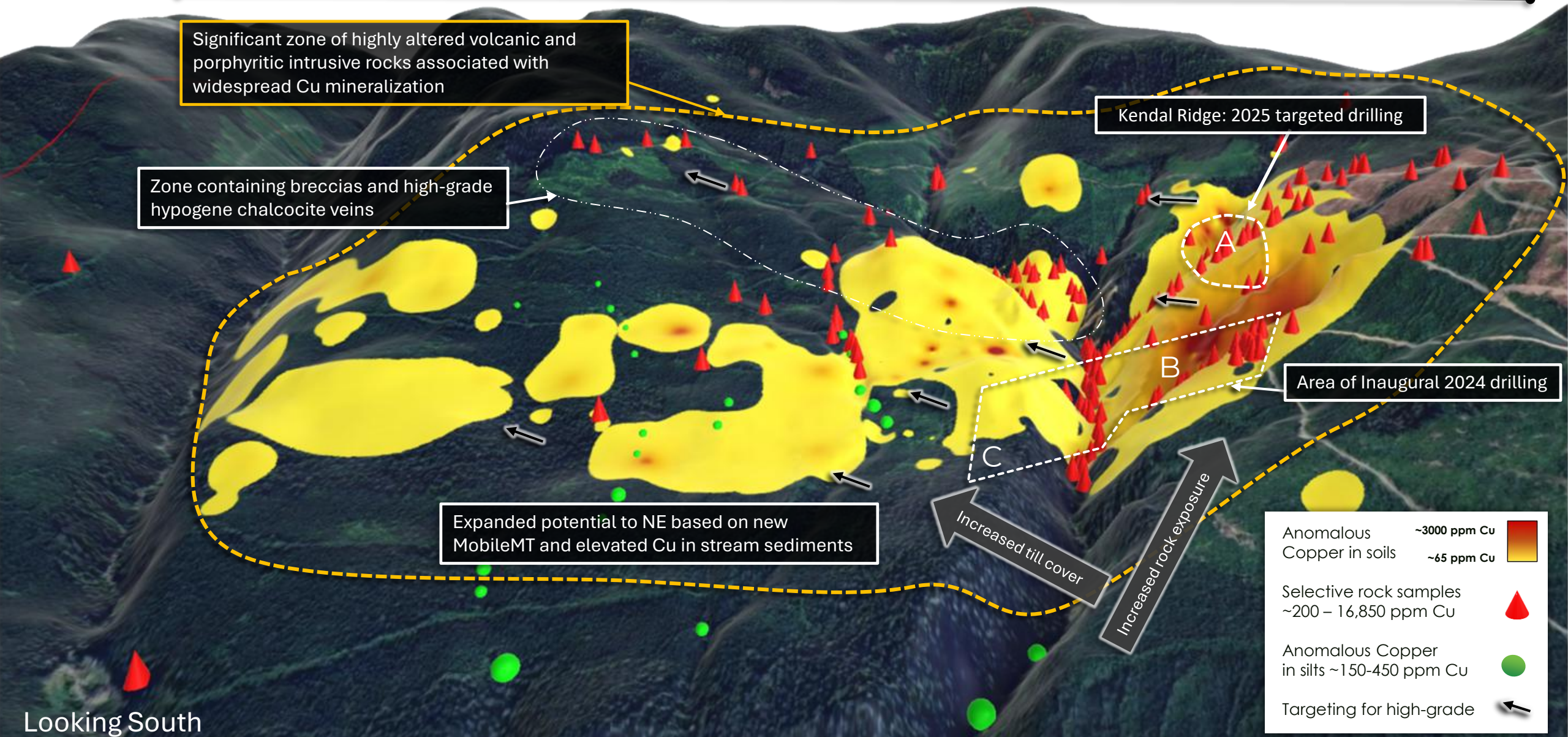
Kendal Ridge: 2025 targeted drilling

Area of Inaugural 2024 drilling

Expanded potential to NE based on new MobileMT and elevated Cu in stream sediments

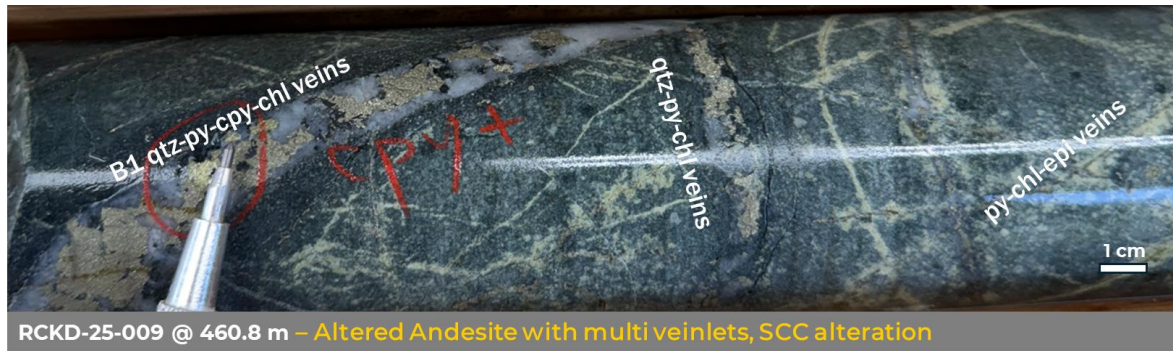
Anomalous Copper in soils	~3000 ppm Cu	
	~65 ppm Cu	
Selective rock samples	~200 – 16,850 ppm Cu	
Anomalous Copper in silts	~150-450 ppm Cu	
Targeting for high-grade		

Looking South

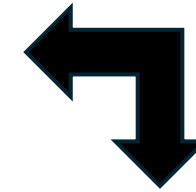


# Extensive Mineral System

A

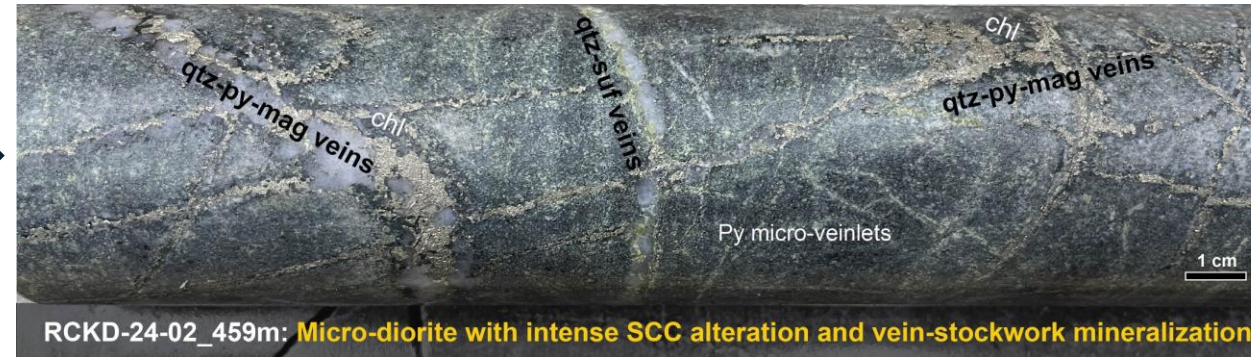
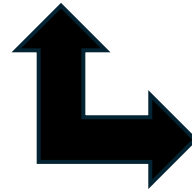


~600m  
horizontal  
distance  
apart

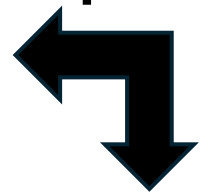


B

~250m  
vertical  
distance  
apart

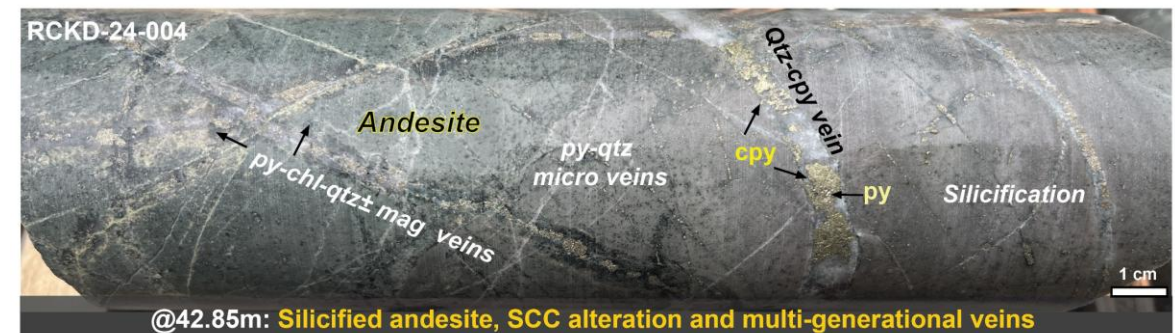
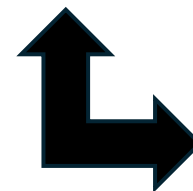


~750m  
horizontal  
distance  
apart

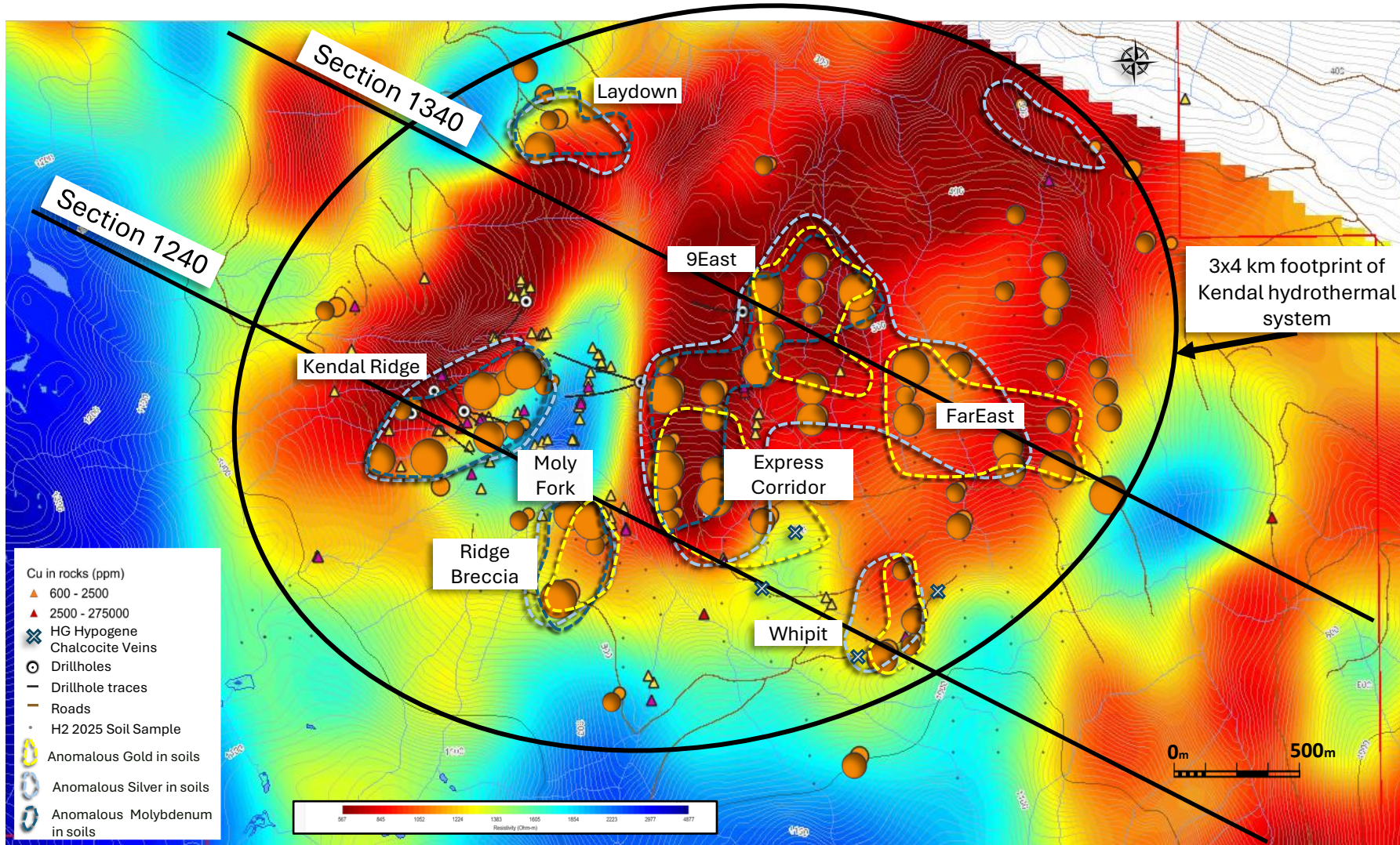


C

~325m  
vertical  
distance  
apart



# Large Scale Conductivity – Cu-Mo-Au-Ag Geochemistry

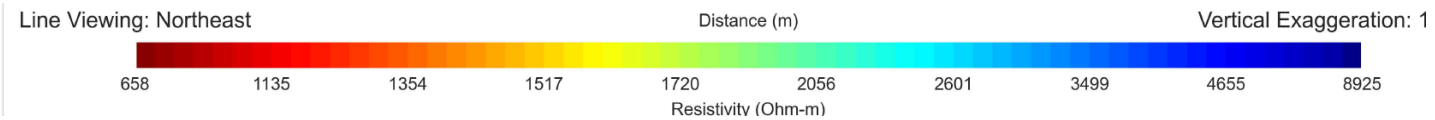
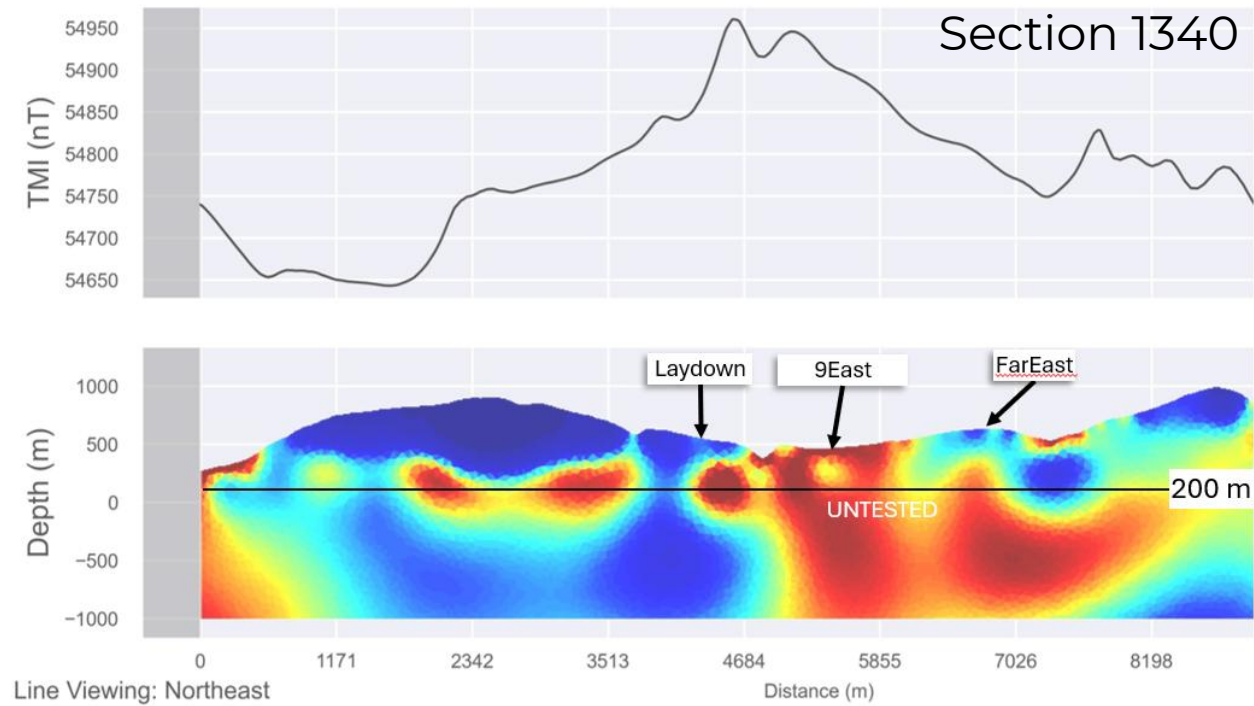
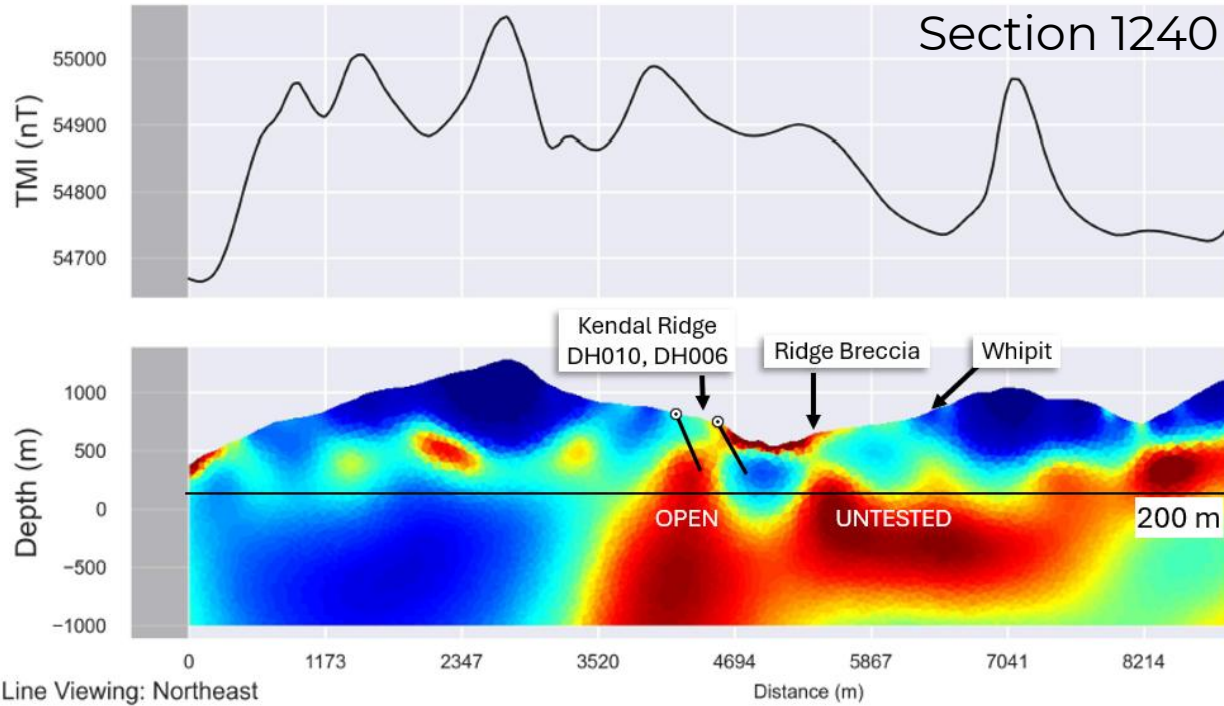


Resistivity slice at 200masl. Interpreted footprint of Kendal hydrothermal system defined by an extensive zone of relative conductivity (MMT resistivity low).

New, untested coincident geochemistry highs

Small portion of interpreted hydrothermal system tested

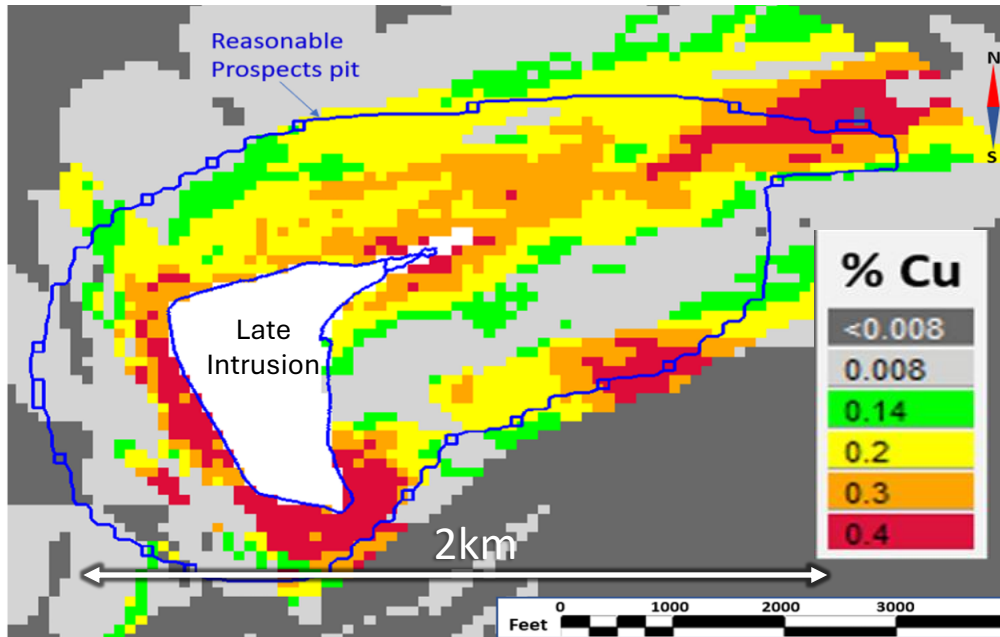
# Kendal MobileMT Target Areas



# “Scratched the Surface”

## Kendal Alteration Footprint Comparison with Pinto Valley Copper-Moly Deposit Footprint

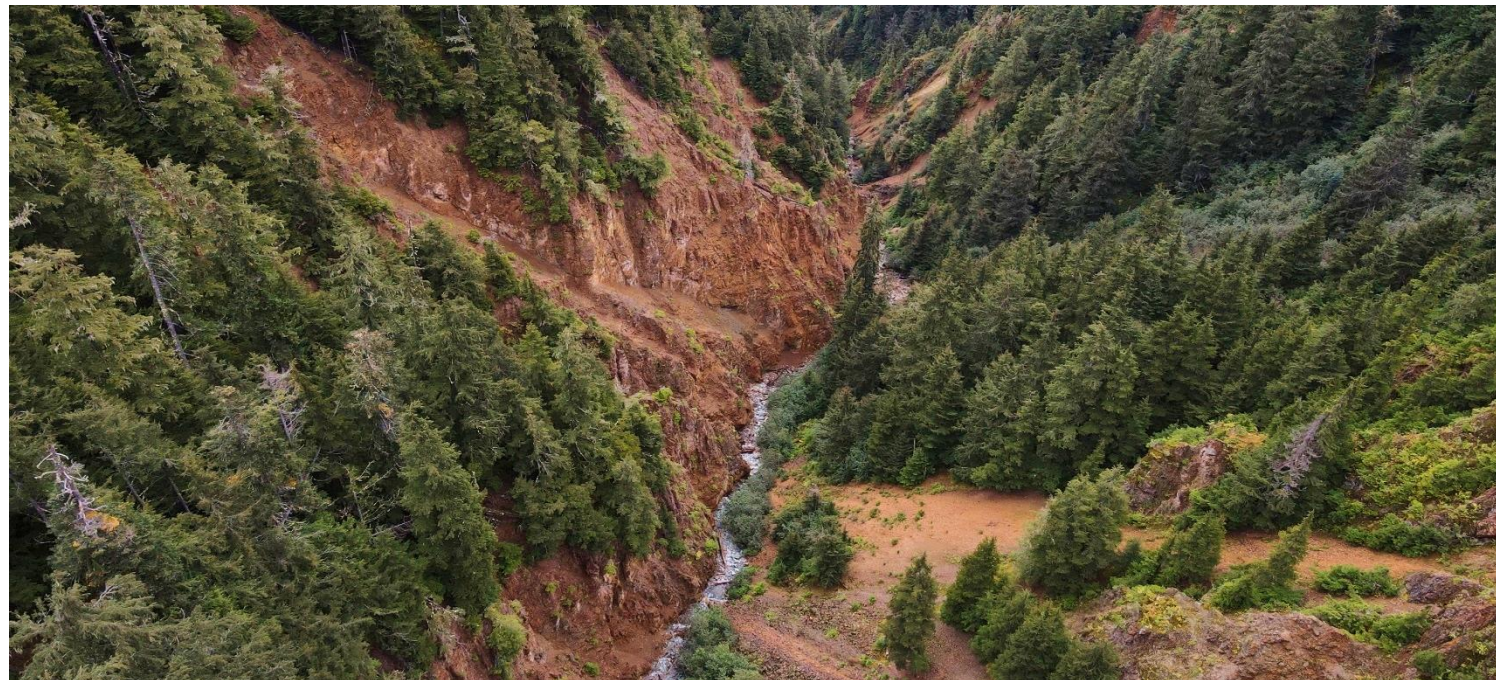
Approx 3x4 km interpreted  
footprint of Kendal  
hydrothermal system



Pinto Valley Mine Open Pit



Pinto Valley, Plan View of Block Model at Elevation 3050'  
with Cu % Grades. M&I Resources (2021) 1402 MT @  
0.29% Cu, 0.006% Mo. (source: Kirkham, 2021)



**Dr. Craig Hart, Chief Geoscientist of the Company, states:** *“The extensive mineralized alteration footprint encountered with these first-ever drill holes at Kendal, indicates a porphyry system with a massive amount of fluid flow. The large alteration footprint and corresponding multi-generations of hydrothermal veins give us confidence about the scale of the system and the potential to target towards a high-grade core.*”

**Wendell Zerb, the Chairman and CEO of the Company, states:** *“Copper–moly porphyry mines worldwide are some of the largest, highest value sources of metal and it’s especially rare for a small cap mineral exploration company to discover and control 100% of potentially a large copper-moly system, with importantly exceptional infrastructure”.*

# Inzana Projects

## STRATEGIC CLAIM POSITION

15,447 HECTARES

100% OWNED

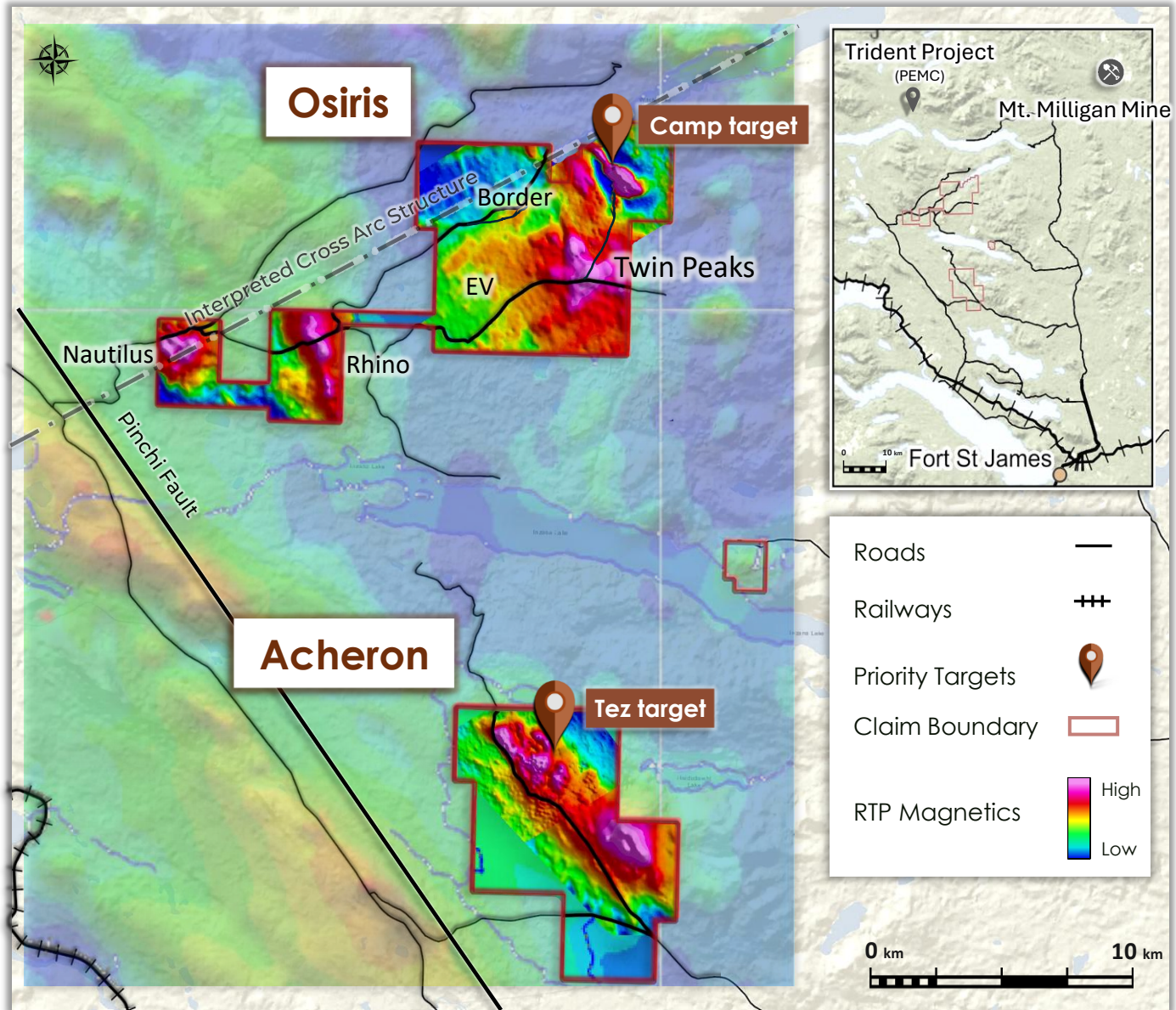
Quesnellia Island Arc Terrane bounded to the west by a major NW regional structure and to the north by an interpreted cross arc structure

Historical work identified significant copper porphyry mineralization on surface and in shallow drilling.

Red Canyon has completed airborne magnetics with MVI modeling, expanded geochemistry, geological mapping, drill core relogging and four acid chemistry

Excellent infrastructure with road access throughout area, including recent expansion of logging road access.

**Drilling planned for H1 2026**

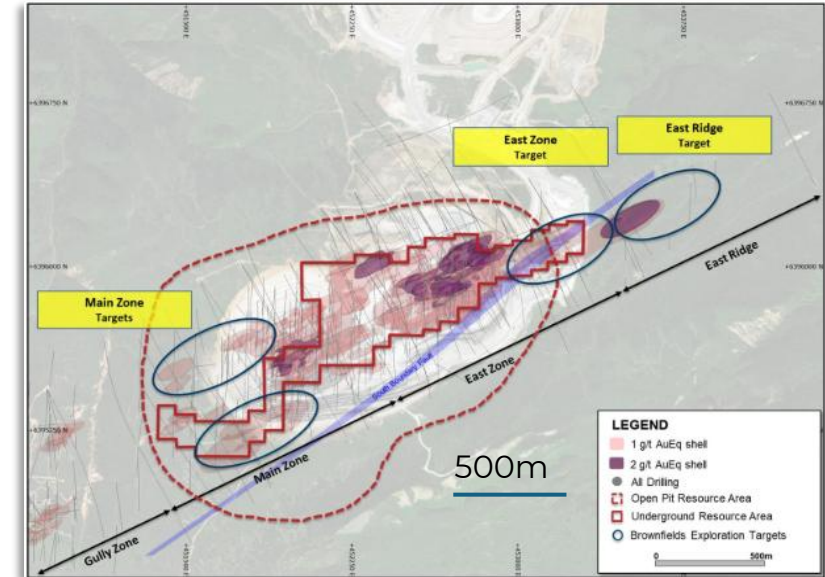


# Camp Target – What's the Comparable Target?

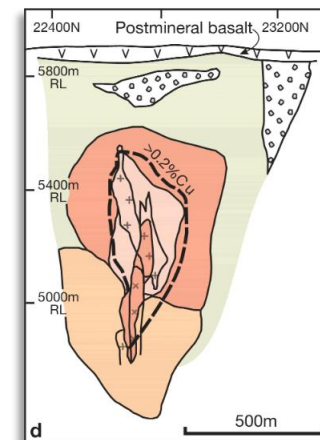


Red Chris Mine

Red Chris Mine Plan



Ridgeway Gold-Copper Deposit



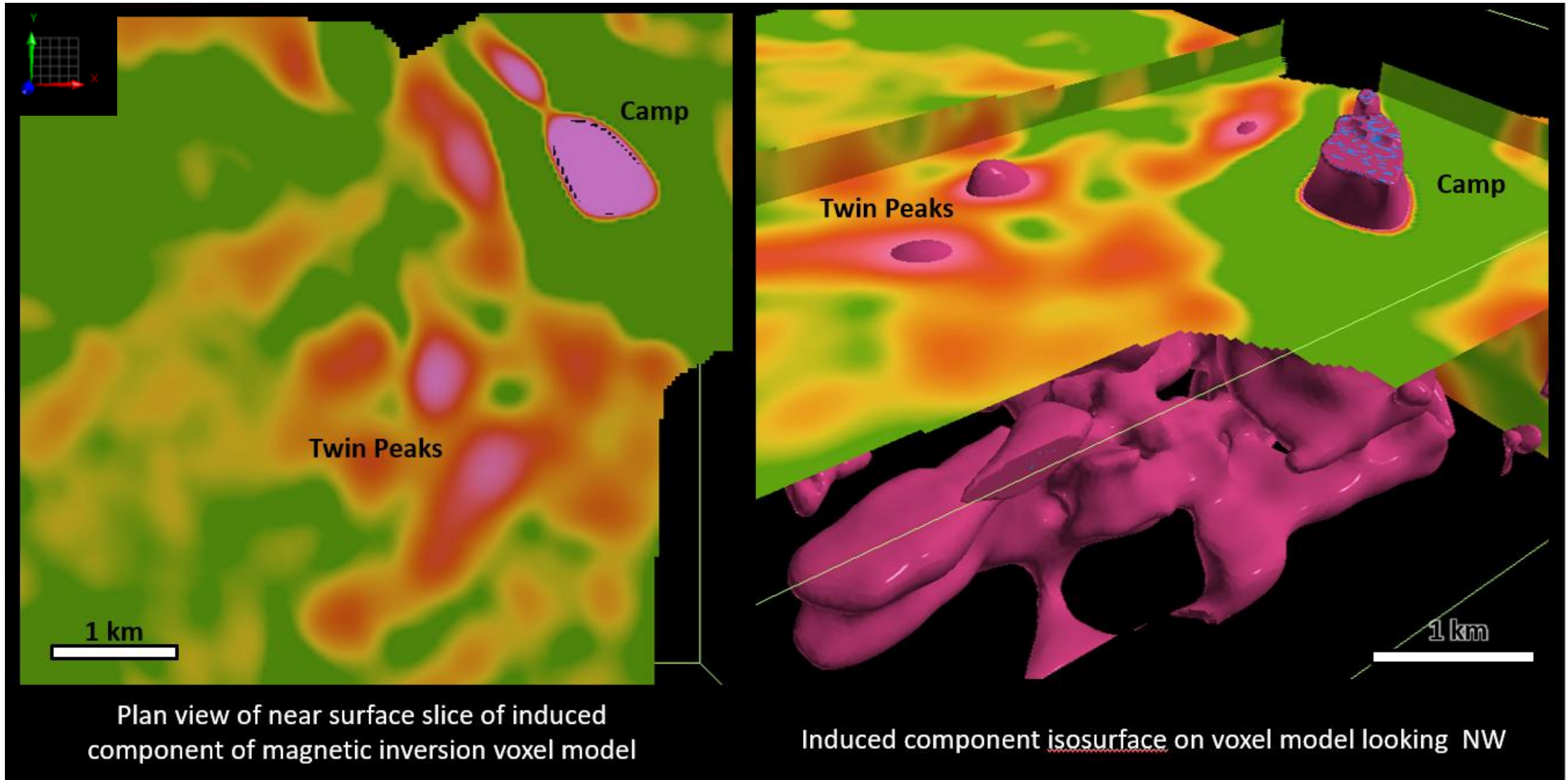
54 Mt at 2.5 g/t Au and 0.77% Cu

Approx Mineral resource of 20 million ounces of gold and 13 billion pounds of copper.

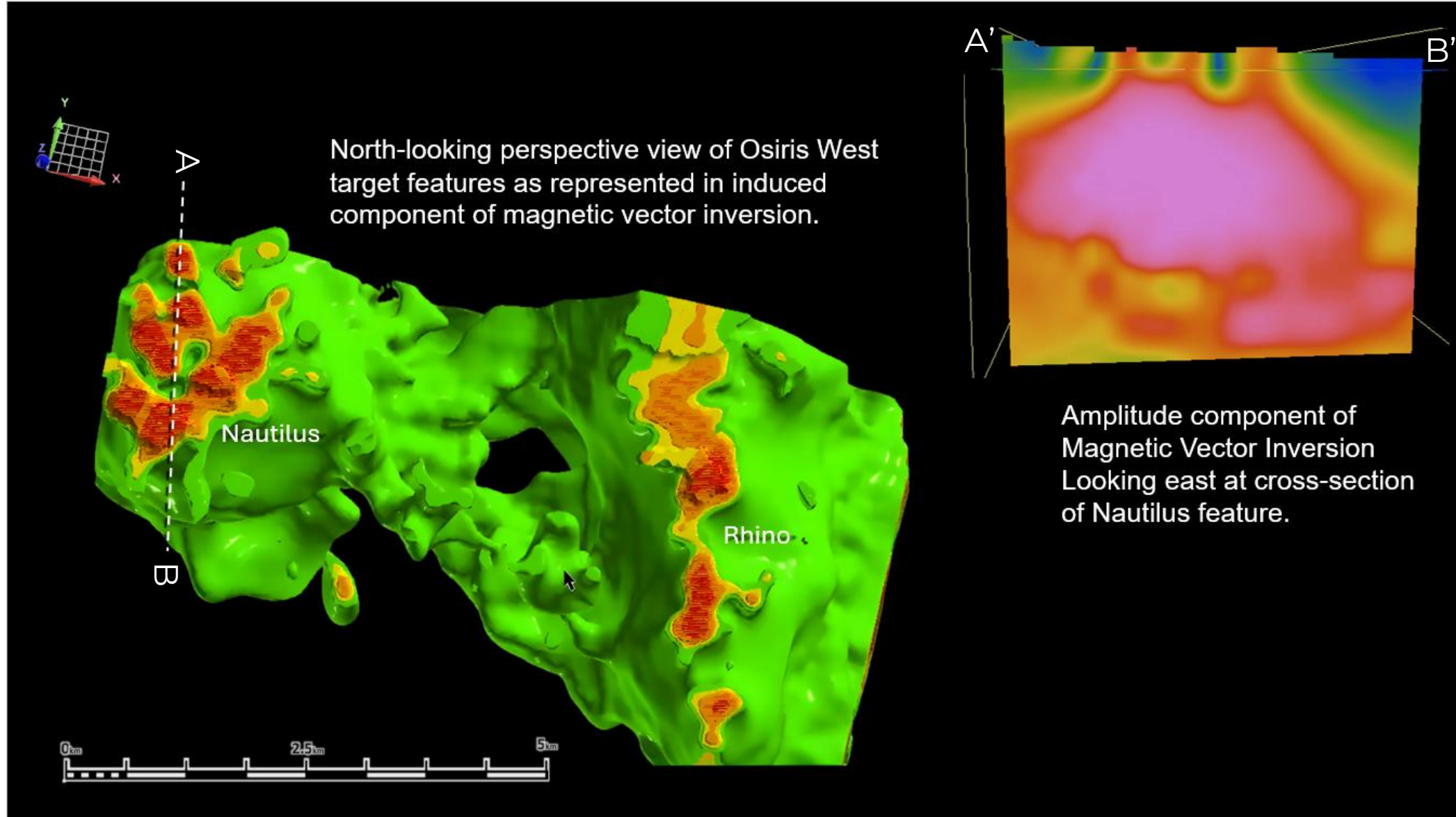
**Open Pit:** 310 Mt @ 0.28 g/t Au and 0.34% Cu M&I.

**Underground:** 670 Mt @ 0.46 g/t Au and 0.40% Cu M&I. 2021

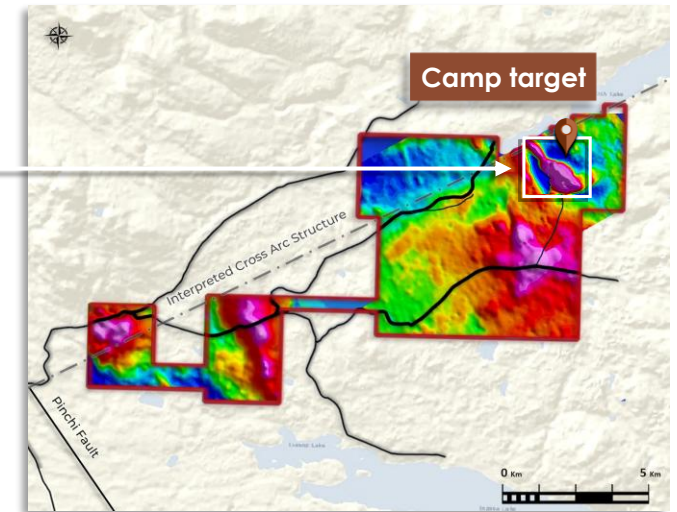
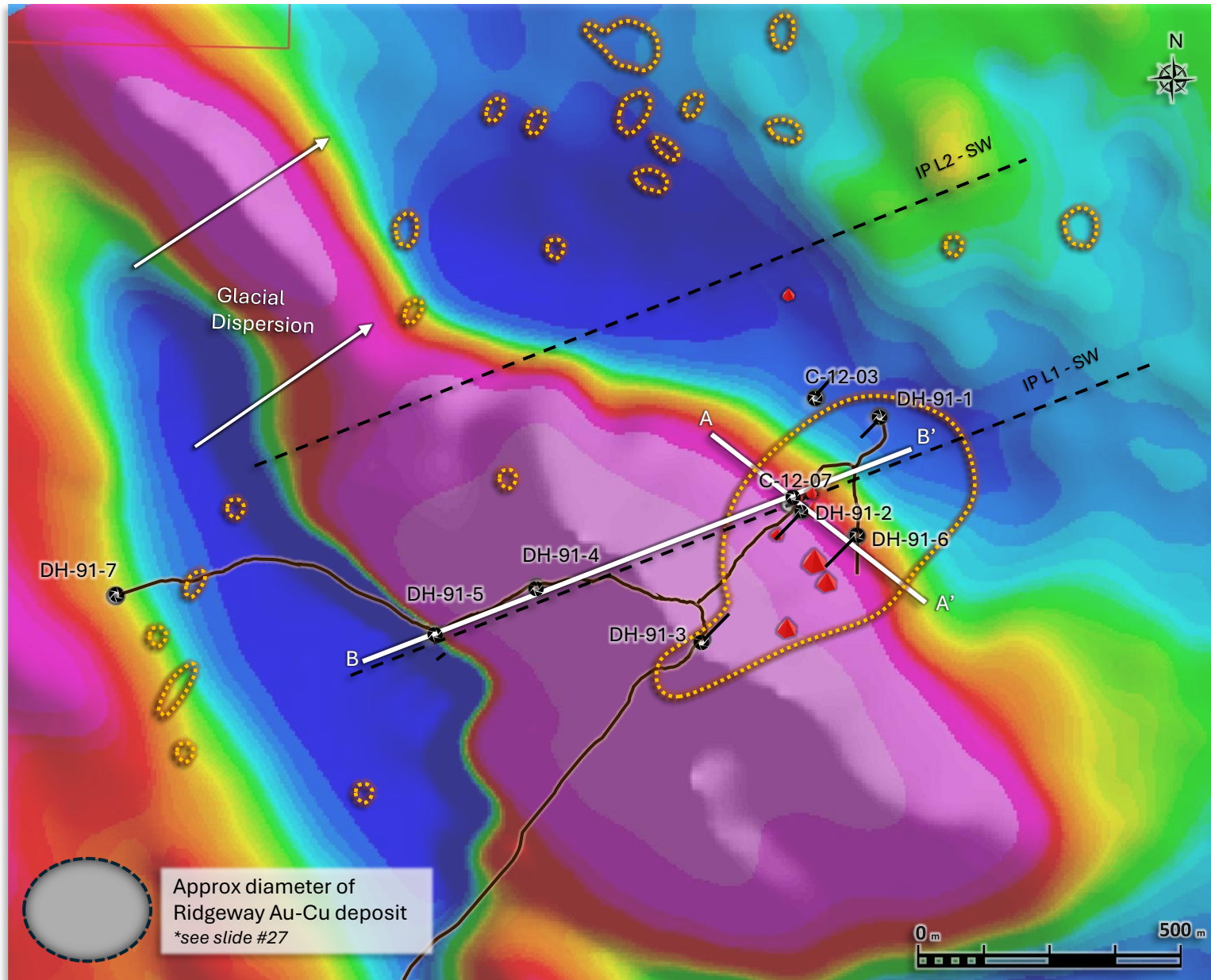
# Camp and Twin Peaks Target MVI Induced Image



# Nautilus and Rhino Target MVI Images



# Camp Copper-Gold Porphyry Target

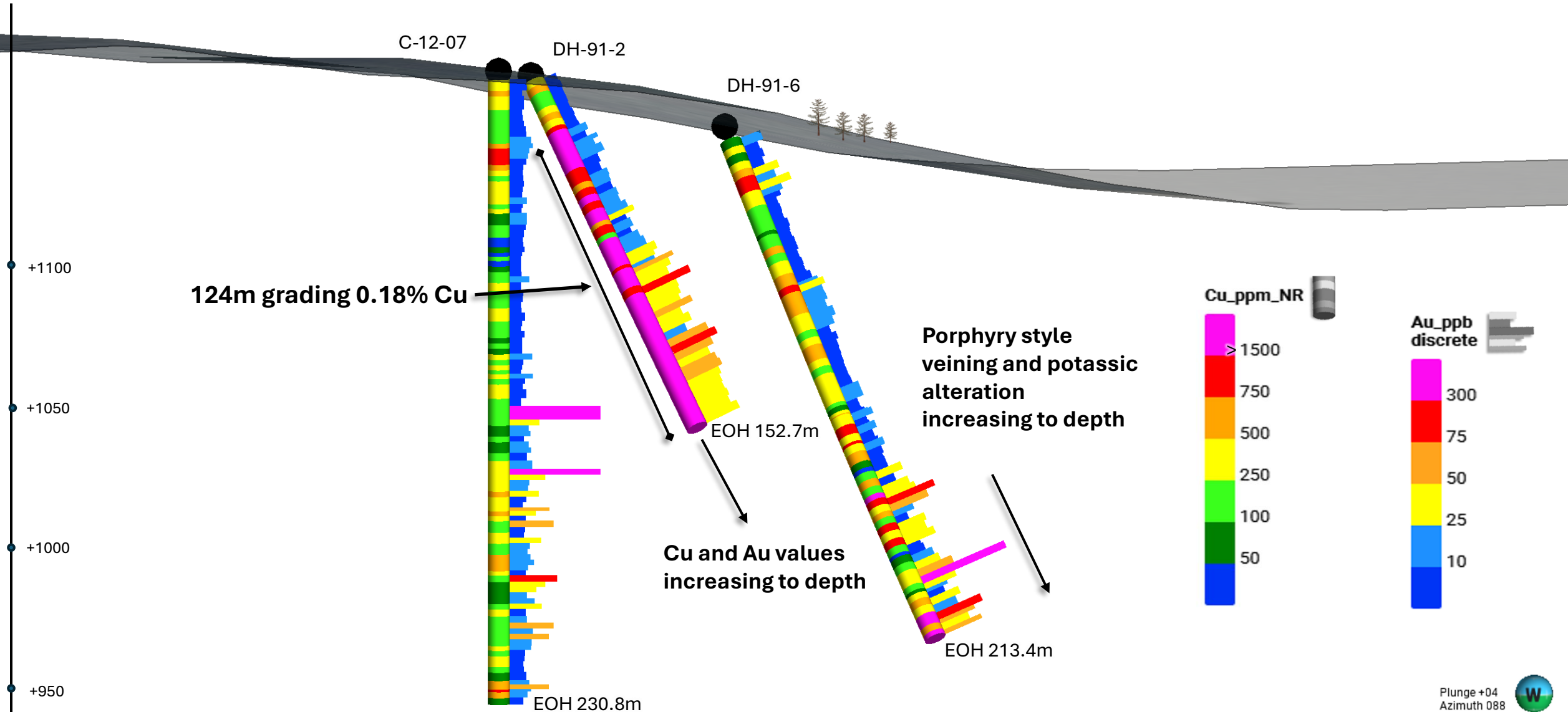


- Roads —
- Cross section lines ▬
- 2011 IP Lines ---
- Historic drill hole location ⊗
- Anomalous Copper in rocks  
~500-3100 ppm Cu ▲
- Anomalous Copper in soils  
~100-3000 ppm Cu ⊗
- RTP Magnetics High  
Low

# Camp Copper-Gold Porphyry Target

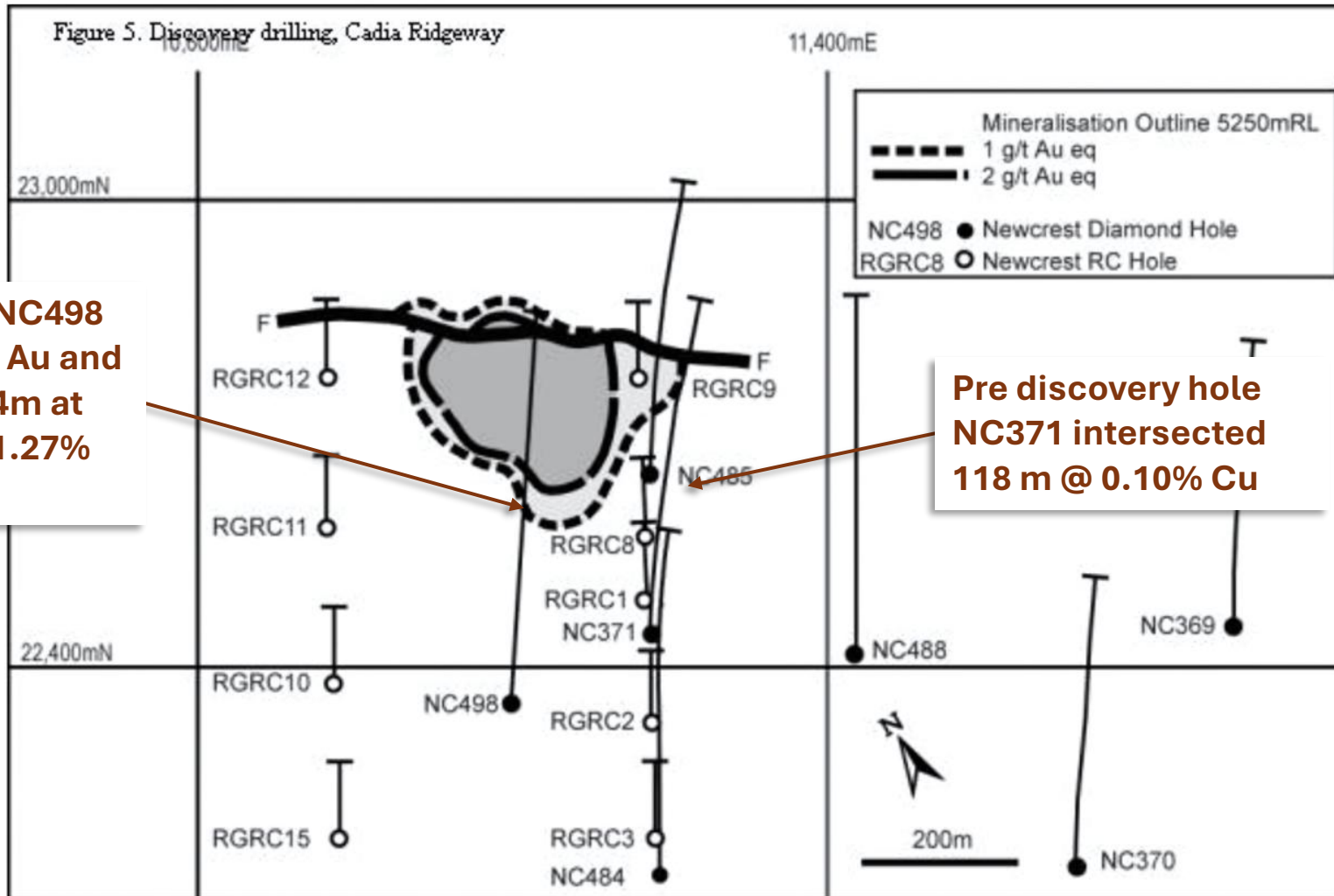
## A N-S Cross Section

A'



# Cadia Ridgeway Discovery

## Alkalic Copper-Gold Porphyry

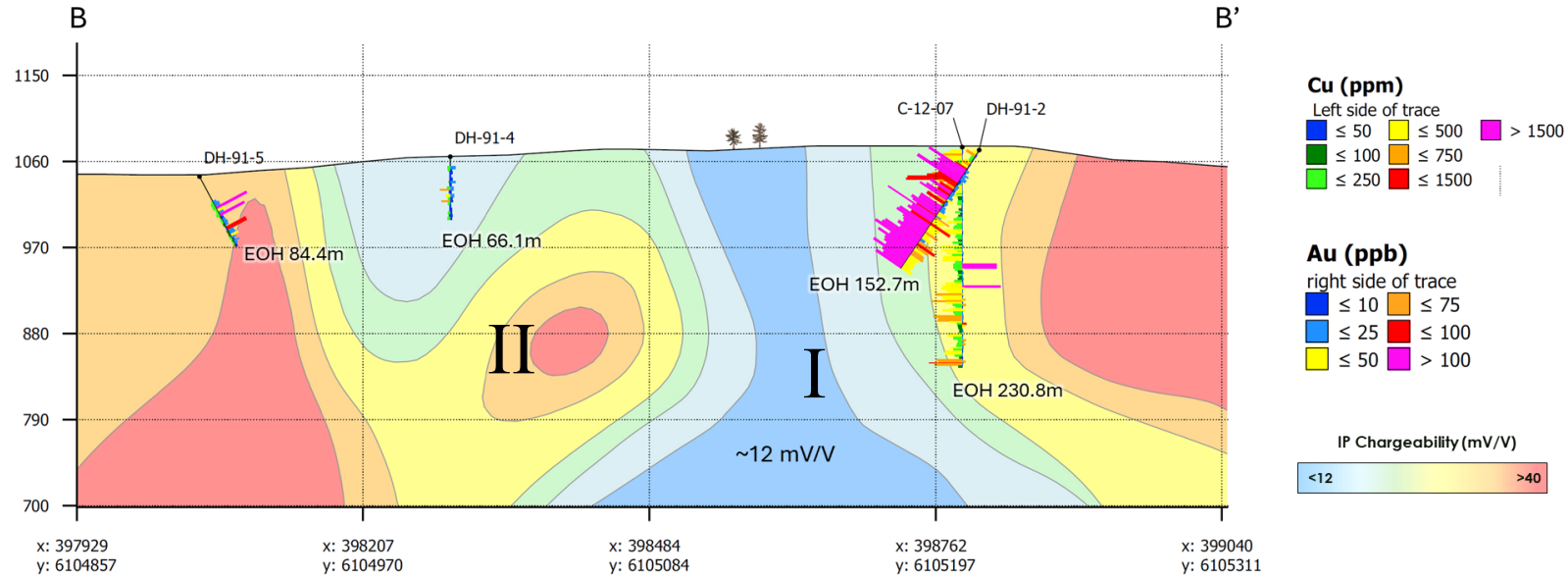


**Discovery hole NC498**  
 145m at 4.30 g/t Au and  
 1.20% Cu and 84m at  
 7.40 g/t Au and 1.27%  
 Cu

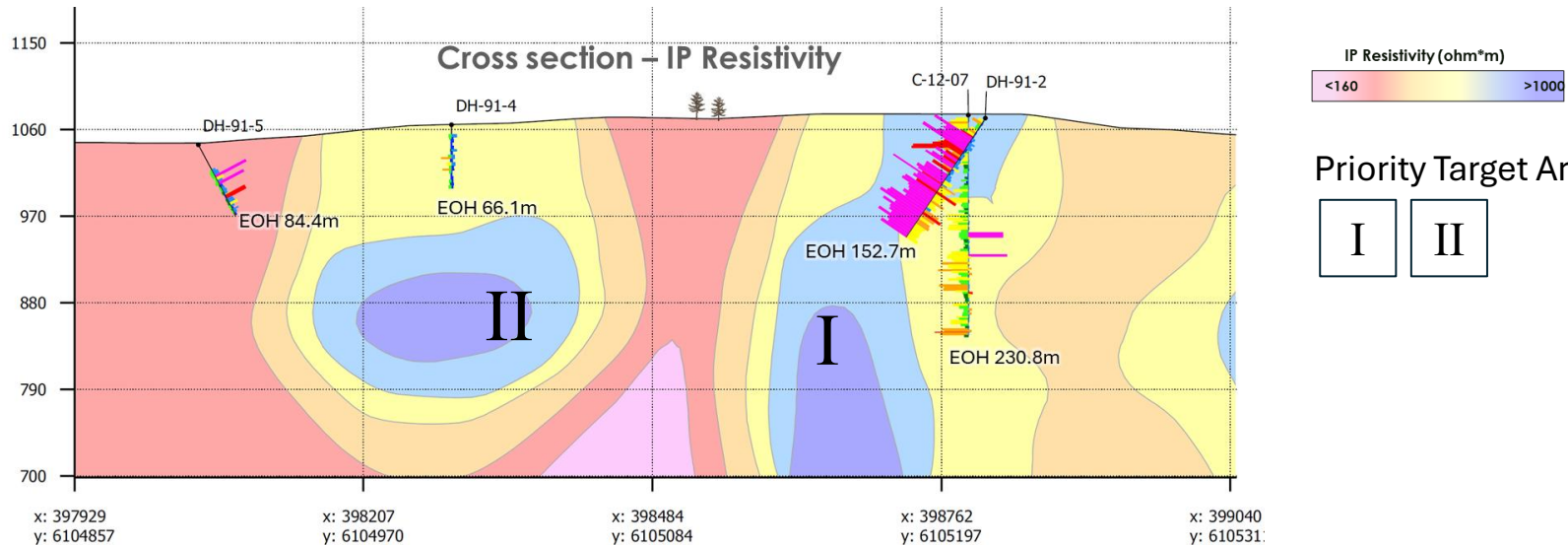
**Pre discovery hole  
 NC371 intersected  
 118 m @ 0.10% Cu**

# Camp Copper-Gold Porphyry Target

Cross Section – IP Chargeability



Cross section – IP Resistivity



Priority Target Areas:

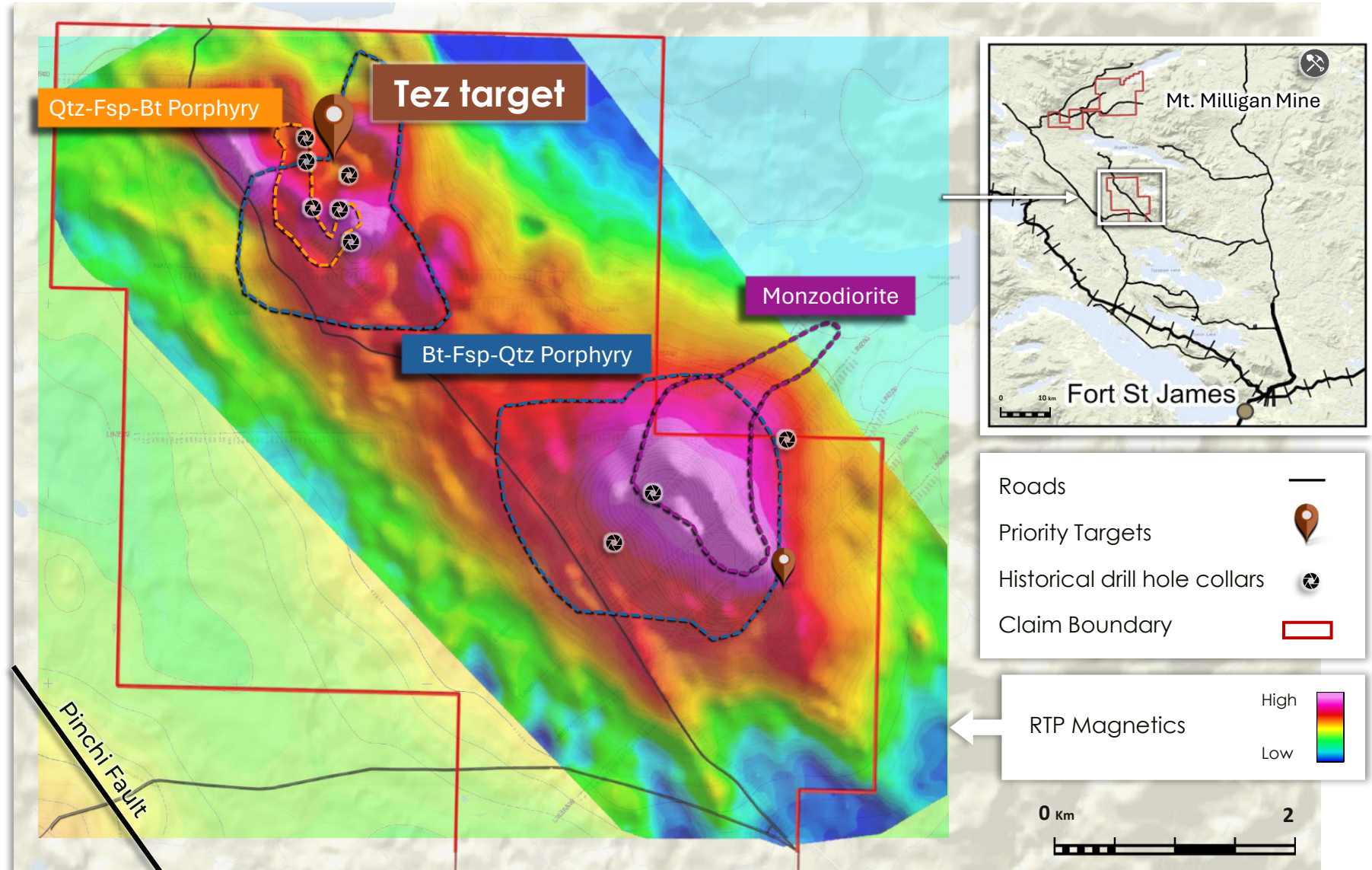


# Tez Copper-Gold-Moly Porphyry Target

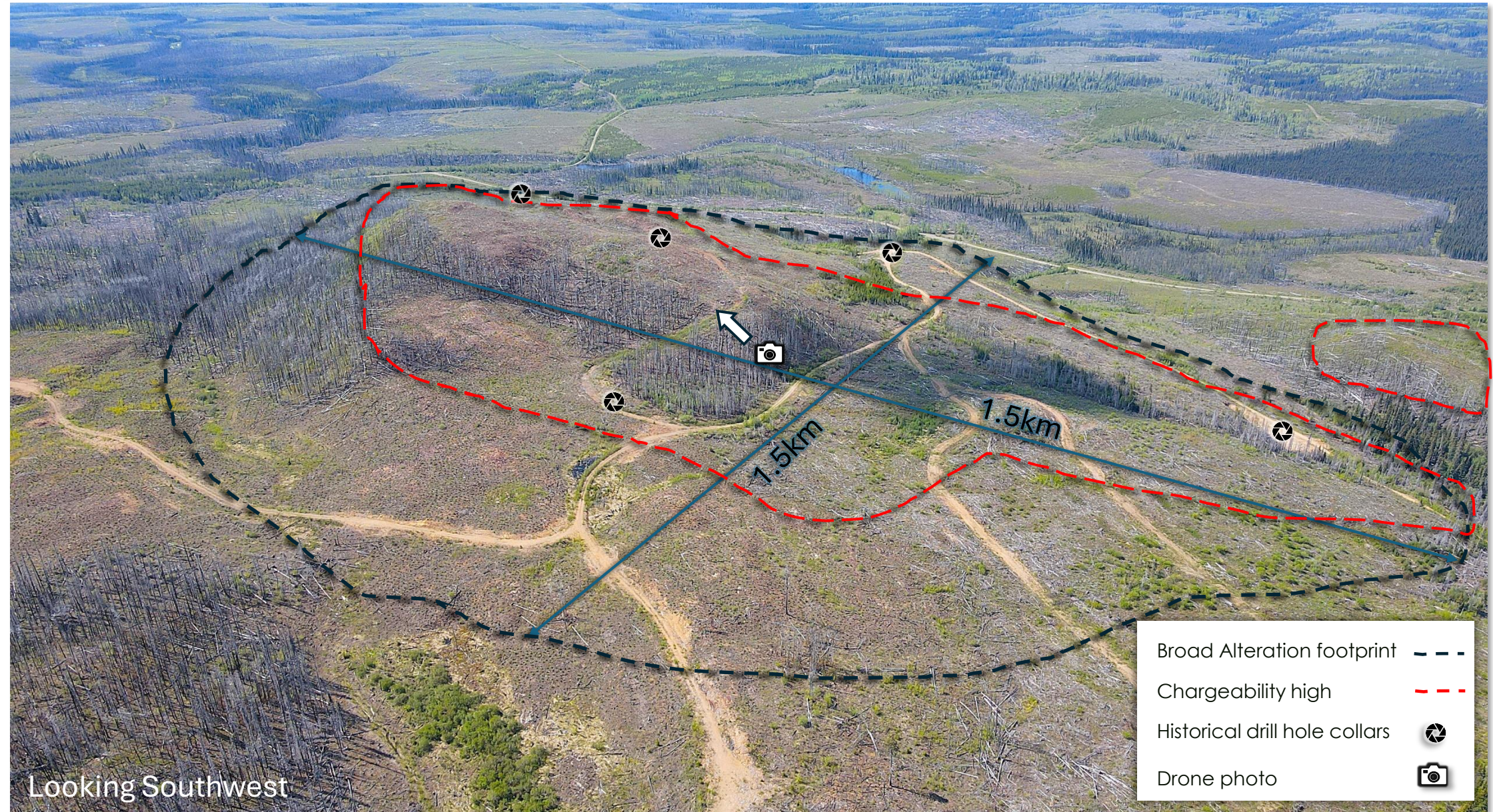
Series of complex oxidized porphyritic intrusions associated with significant hydrothermal alteration and Cu-Au-Mo mineralization

Historical shallow drilling identified mineralized system at Tez

Excellent infrastructure with road access that cuts through the project area.

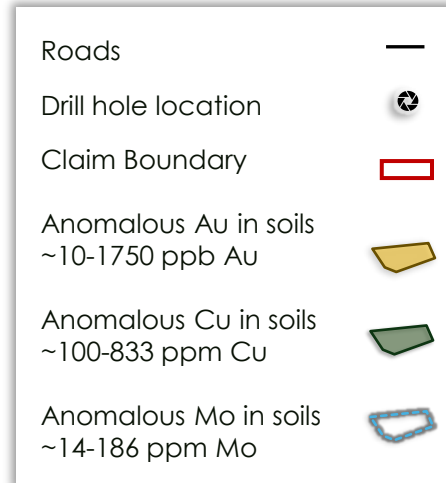
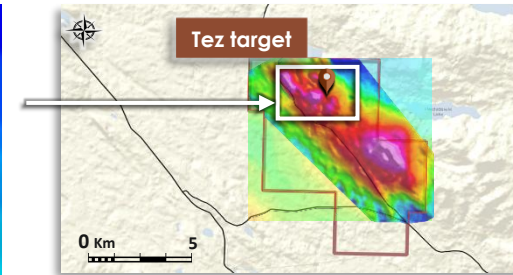
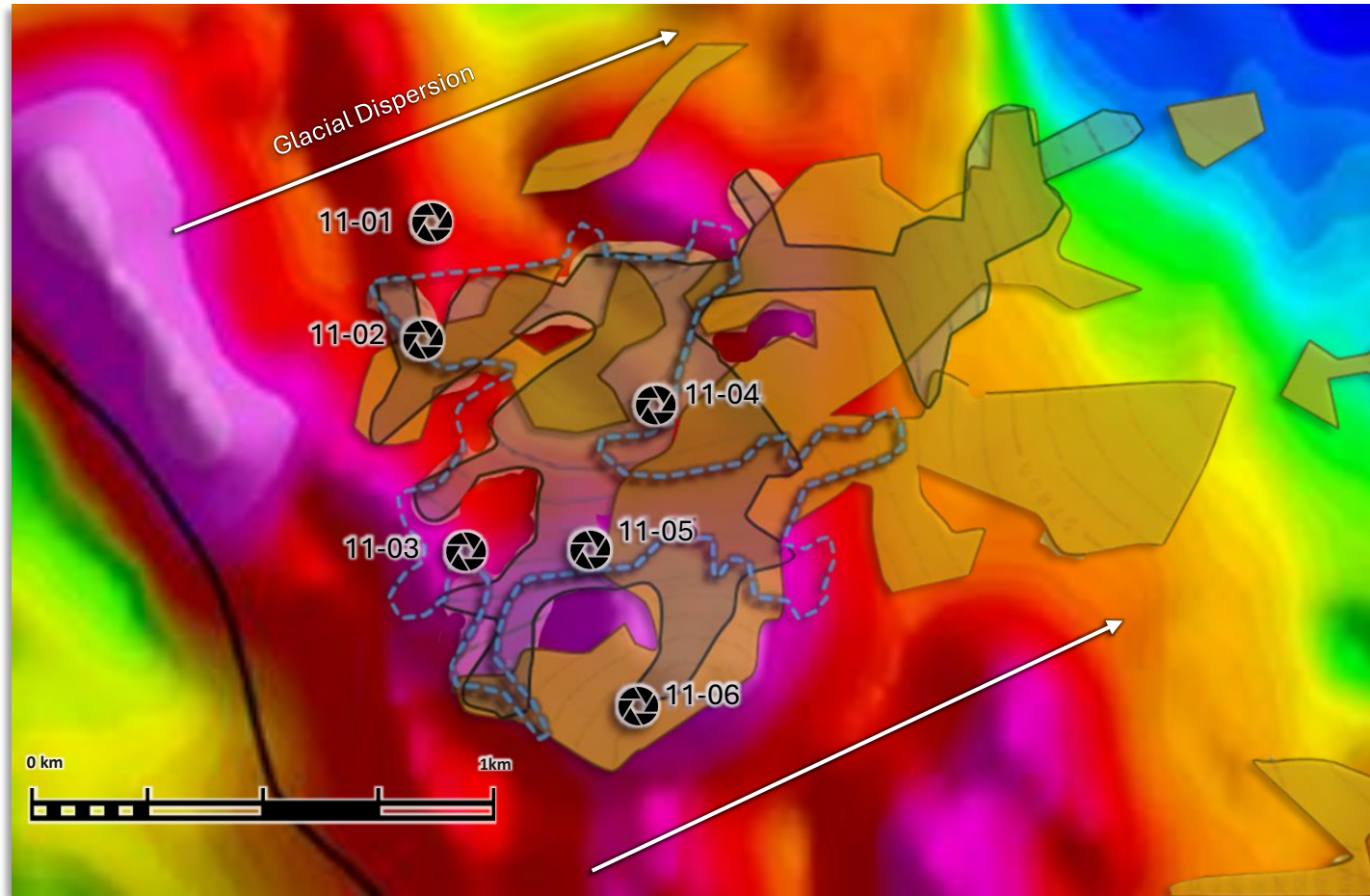


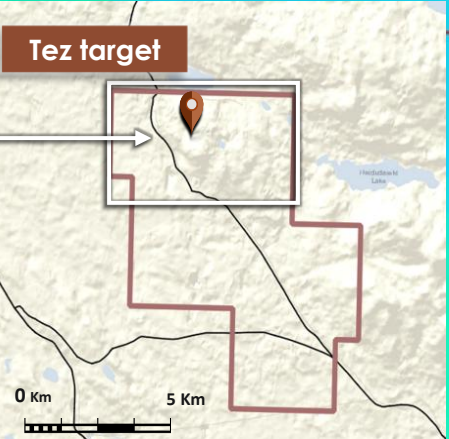
# Tez Surface Alteration Footprint



# Tez Copper-Gold-Moly Geochemistry

Coincident copper, gold and moly soil geochemistry associated with mineralized porphyry intrusions





2008 Outcrop sample: 0.95% Cu, 0.80 g/t Au, 34 ppm Mo

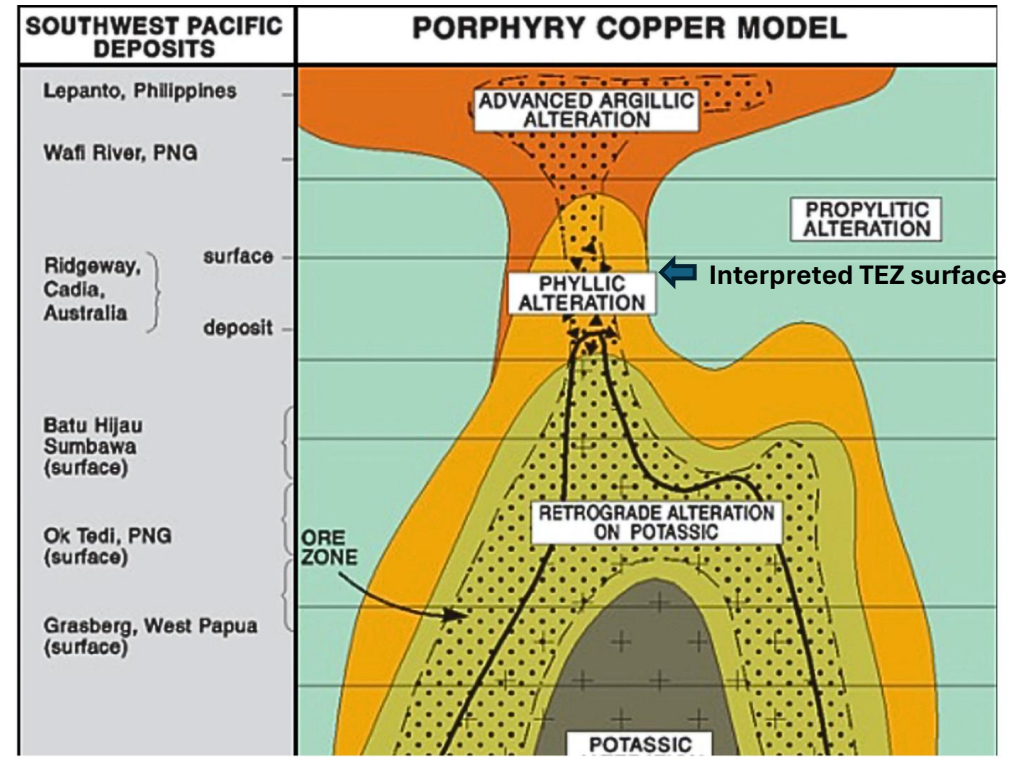
Historical drill hole collars	
Fsp-Hbl-Bt Porphyry	
2008 Outcrop sample	
Interpreted plunge	
Priority targets	
RTP Ground Magnetics	



# Tez Copper-Gold-Moly Porphyry Target



Tez INZA DH11-02 Select Core Samples



Porphyry Copper model with Interpreted Tez Surface

# Western U.S. Projects

Targeting under-explored mineral trends associated with world-class mines

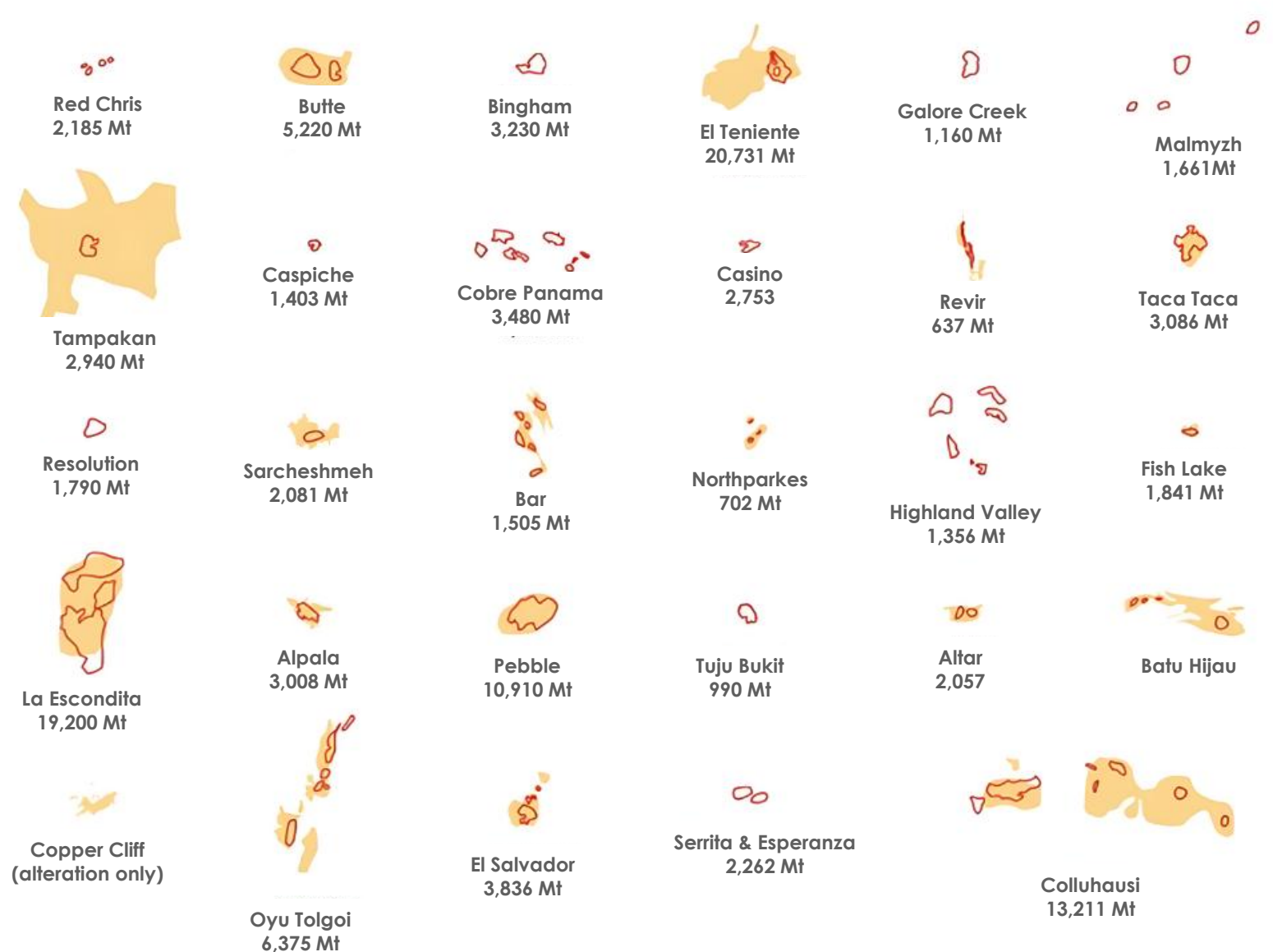
Two projects, 100% owned.

Continuing to generate new projects in the western USA's most exciting Copper belts



# Scraper Springs Alteration Footprint

Orebody Footprint
  Alteration Footprint
 
 0    5    10    20 km



# Scraper Springs Project

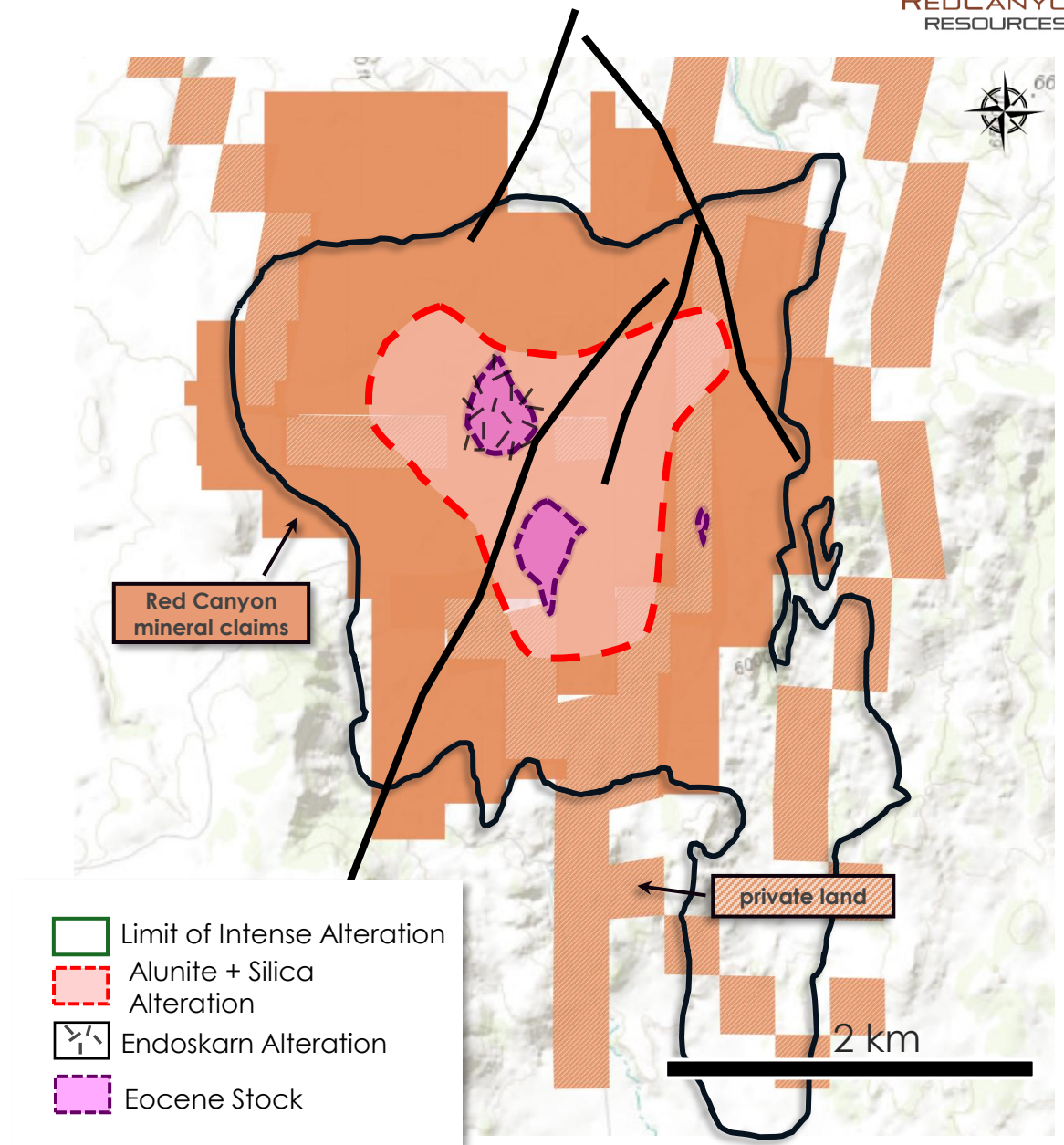
190 UNPATENTED CLAIMS	
1,589 HECTARES	100% OWNED

Testing for large Tier 1 scale copper-gold porphyry system

Huge alteration (~16 km<sup>2</sup>) footprint indicating large hydrothermal system centered on Bingham Canyon - age Eocene intrusions

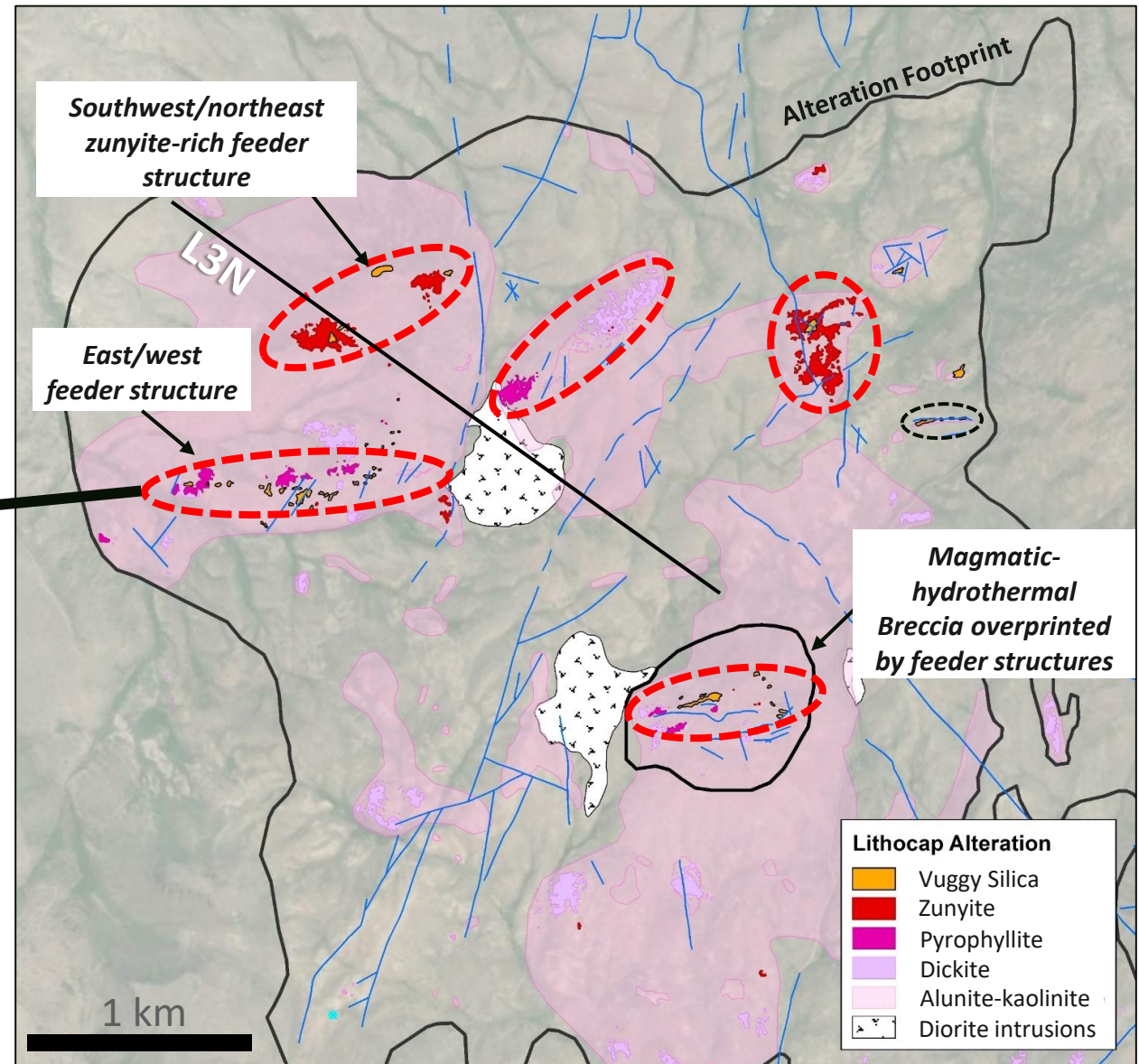
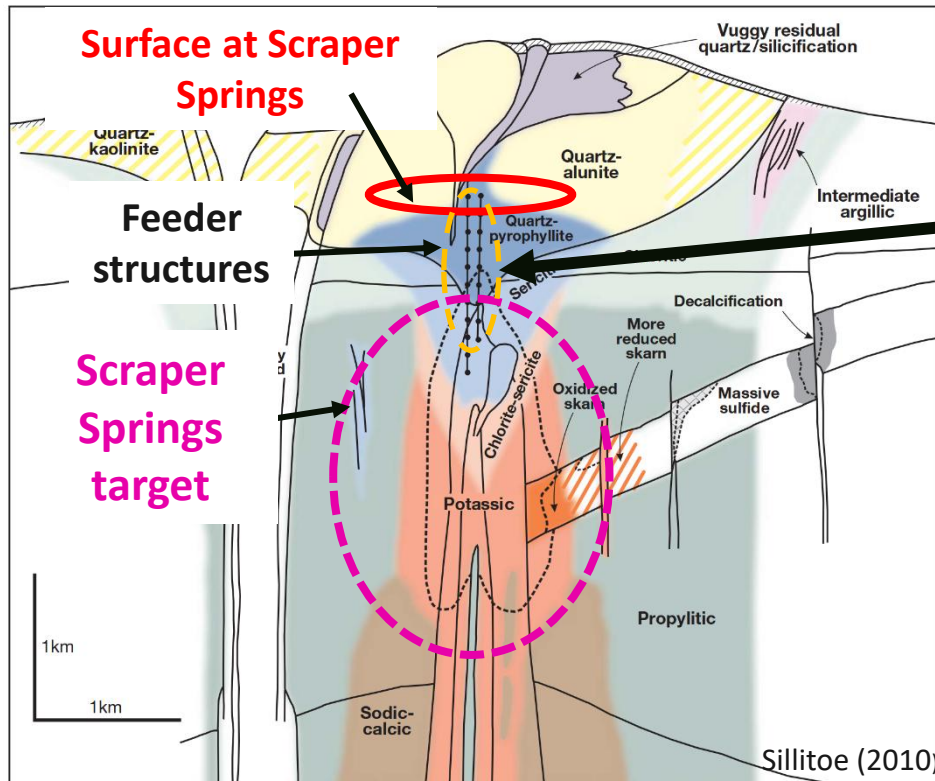
Modeled base of Lithocap with preserved Porphyry copper centre at depth.

**Drill ready**



# Targeting a Tier 1 Porphyry System

190 UNPATENTED CLAIMS	
1,589 HECTARES	100% OWNED



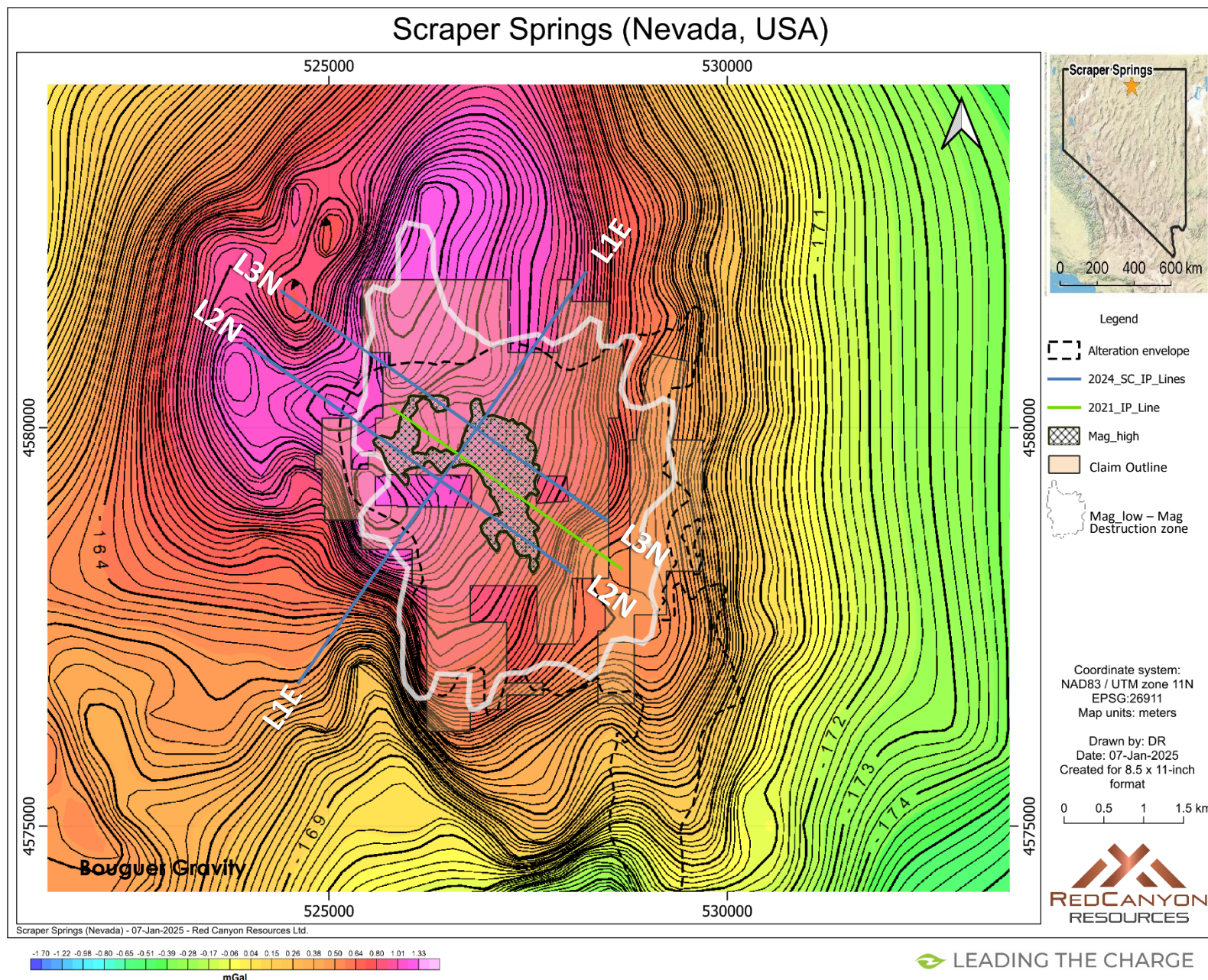
# Scraper Springs Expanded Geophysics

In Q4/24 the Company completed additional deep penetrating IP geophysical lines, gravity and magnetic inversion studies.

Large property scale magnetic low (hydrothermal alteration) and associate bullseye magnetic high.

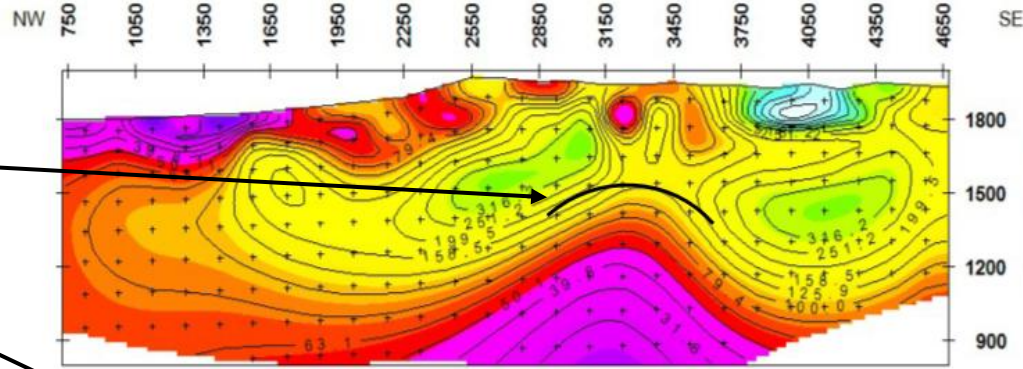
10 km by 5 km north – south trending gravity high. Interpreted to be intrusive complex likely associated with causative intrusions responsible for the large hydrothermal alteration footprint at Scraper.

Expanded 3 line 7.2 km IP program identified several centres of high chargeability and corresponding conductive zones (low resistivity).

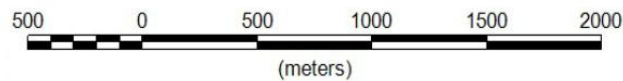
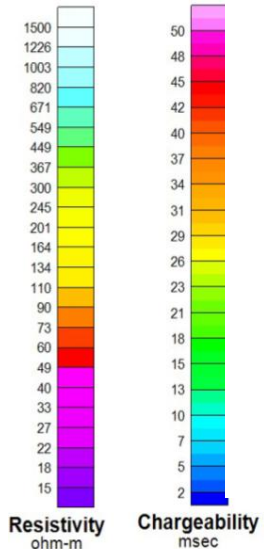
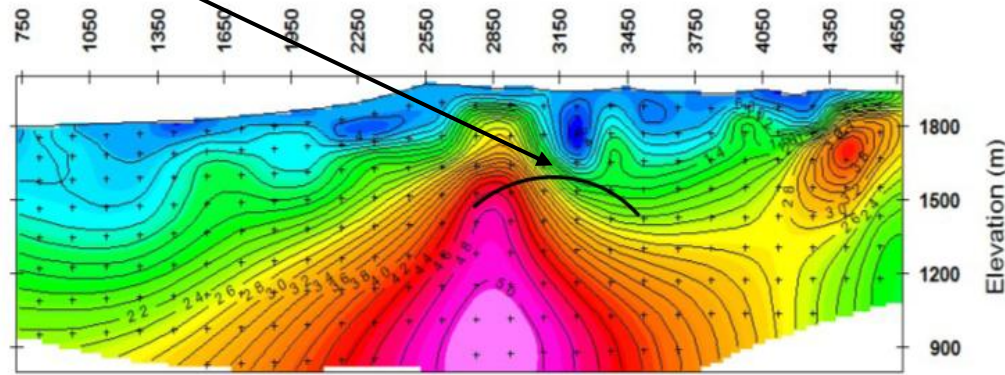


# Scraper Springs L3N IP Geophysics

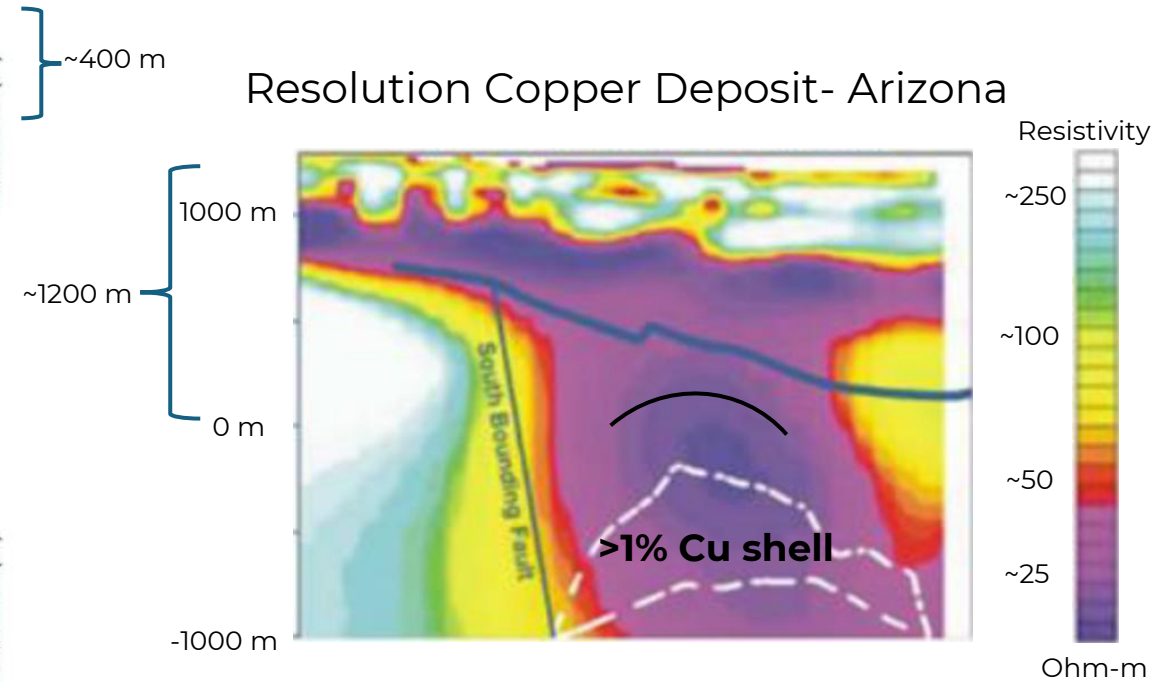
Inversion Model Resistivity (ohm-m)



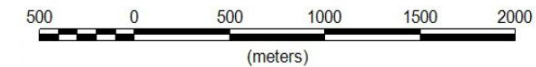
Inversion Model IP (msec)



Resolution Copper Deposit- Arizona



Unconstrained MT Inversion



Inferred Mineral Resources ~1.62 billion tonnes grading ~1.47% Cu, ~0.037% Mo



Scraper Springs Project

# Investment Highlights

## Exposure to Copper Discovery

Copper porphyry system discovered at Kendal project

- ✓ Large scale system 4 km by 3 km – largely untested
- ✓ High margin potential given exceptional Infrastructure
- ✓ 100% owned, no underlying royalties, unrealized market opportunity

In Addition..

- ✓ Six additional 100% owned Copper projects
- ✓ Inzana Copper–Gold targets – drilling planned for spring 2026
- ✓ Scraper Springs – high priority target - drill ready

## Team

Technically driven team of geoscientists & capital market experts

- ✓ History of discovery and development success

## Quality Jurisdictions

Exploring North-America's top Copper districts

- ✓ Infrastructure is a first consideration
  - Improves potential for high margin discovery

## Market Cycle – Small Caps and Copper

Copper market deficit to drive interest in small cap copper companies



Core talk with Senior Consulting Geologist, Dr. Abdul Razique and Chief Geoscientist, Dr. Craig Hart



Night drilling at Kendal project



Helicopter safety meeting



Core cutting at Kendal project

# Contact

Wendell Zerb

**Chairman & CEO**

Tel: +1-604-831-0924

wzerb@redcanyonresources.com

Brennan Zerb

**Investor Relations Manager**

Tel: +1-778-867-5016

brennan@redcanyonresources.com