

Q 3 2025

NEWQUEST
CAPITAL

LEADING THE CHARGE

EXPLORING NORTH AMERICA'S TOP COPPER DISTRICTS

New Copper – Moly discovery at 100% owned Kendal Project



CSE: **REDC** OTCQB: **REDRF**

redcanyonresources.com

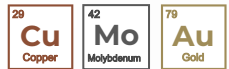
Cautionary Statement

Investors are cautioned that, except for statements of historical fact, certain information contained in this document includes "forward-looking information", with respect to a performance expectation for Red Canyon Resources. Such forward-looking statements are based on current expectations, estimates and projections formulated using assumptions believed to be reasonable and involving a number of risks and uncertainties which could cause actual results to differ materially from those anticipated. Such factors include, without limitation, fluctuations in foreign exchange markets, the price of commodities in both the cash market and futures market, changes in legislation, taxation, controls and regulations of national and local governments and political and economic developments in Canada, the United States and other countries where the company carries-out or may carry-out business in the future, the availability of future business opportunities and the ability to successfully integrate acquisitions or operational difficulties related to technical activities of mining and reclamation, the speculative nature of exploration and development of mineral deposits located, including risks in obtaining necessary licenses and permits, reducing the quantity or grade of reserves, adverse changes in credit ratings, and the challenge of title. The Company does not undertake an obligation to update publicly or revise any forward-looking statements or information, whether as a result of new information, future events or otherwise, unless so required by applicable securities laws. Some of the results reported are historical and may not have been verified by the Company.

All technical information in this presentation have been reviewed and approved by Wendell Zerby, P. Geol. A qualified person as defined by National Instrument 43-101.

*Copper Equivalent (CuEq) shown within are calculated on a basis of US\$ 3.75/lb for Cu, US\$ 25/oz for Ag and US\$ 27.5/lb for Mo, with 80% metallurgical recoveries assumed for all metals (ie no assumptions have been made for recoveries at this stage). The formula is:
$$\text{CuEq} = \text{Cu \%} + (\text{Ag grade in g/t} \times (\text{Ag recovery} / \text{Cu recovery}) \times [\text{Ag price} \div 31.1]) / [\text{Cu price} \times 2204.6] + (\text{Mo grade in \%} \times (\text{Mo recovery} / \text{Cu recovery}) \times [\text{Mo price} \times 2200] / [\text{Cu price} \times 2204.6])$$

GLOBAL ALLIANCE OF EXPLORATION COMPANIES

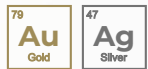


CSE: **REDC**
OTCQB: **REDRF**

REDCANYONRESOURCES.COM



Newmont Earn-in agreements



CSE: **HWG**
OTCQB: **HWAUF**

HEADWATERGOLD.COM



UNDERCOVERGOLD.COM



CONDUITNICKEL.COM

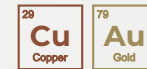


TSX-V: **FINX**

FINEXMETALS.NET



AngloGold Ashanti Earn-in agreements



CSE: **AUCU**
OTCQB: **AUCUF**
FSE: **5VJ**

INFLECTIONRESOURCES.COM

Investment Thesis

Exposure to Impactful Critical Metal Discovery

NEW Copper – Moly discovery at Kendal project

- ✓ Porphyry comparatives suggest strong potential for high grade core
- ✓ High margin potential given exceptional Infrastructure
- ✓ 100% owned, no underlying royalties
- ✓ Rare for small cap company – unrealized market opportunity

In Addition..

- ✓ Seven additional 100% owned Copper projects
- ✓ Inzana Tez and Camp Cu–Au targets – mineralization open and untested
- ✓ Scraper Springs – high priority target - drill ready Spring 2025

Team

Technically driven team of geoscientists & capital market experts

- ✓ History of discovery and development success

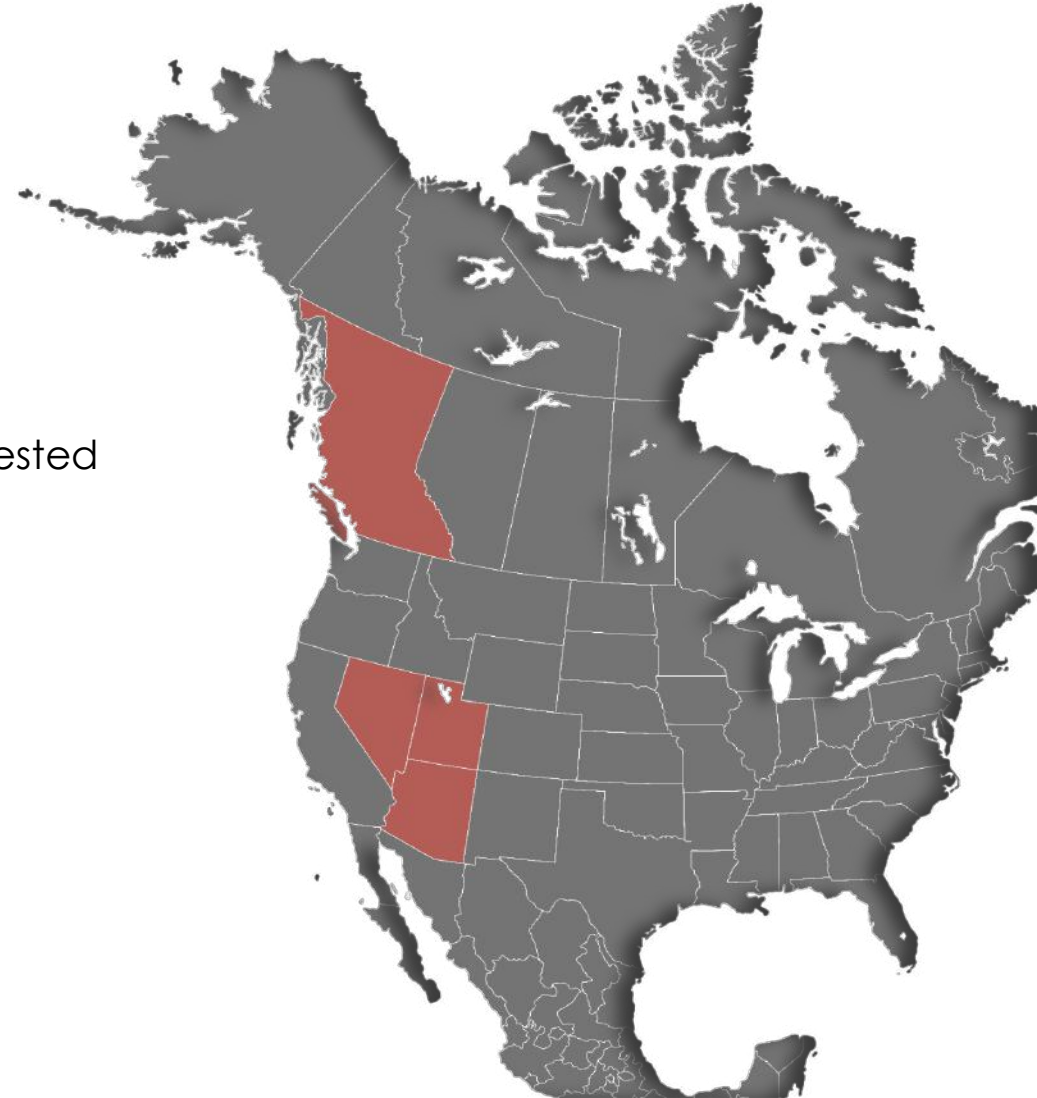
Quality Jurisdictions

Exploring North-America's top Copper districts

- ✓ Infrastructure is a first consideration
 - Improves potential for high margin discovery

Market Cycle – Small Caps and Copper

Copper market deficit to drive interest in small cap copper companies



Copper - the Most Critical Metal

Large, diverse market - EV, AI, infrastructure

- not impacted, manipulated like specialty metals

It is the next, most globally significant commodity

- Markets will embrace: Producers, developers and explorers of copper

There is no viable substitute

- If there is electrification – the world needs more copper

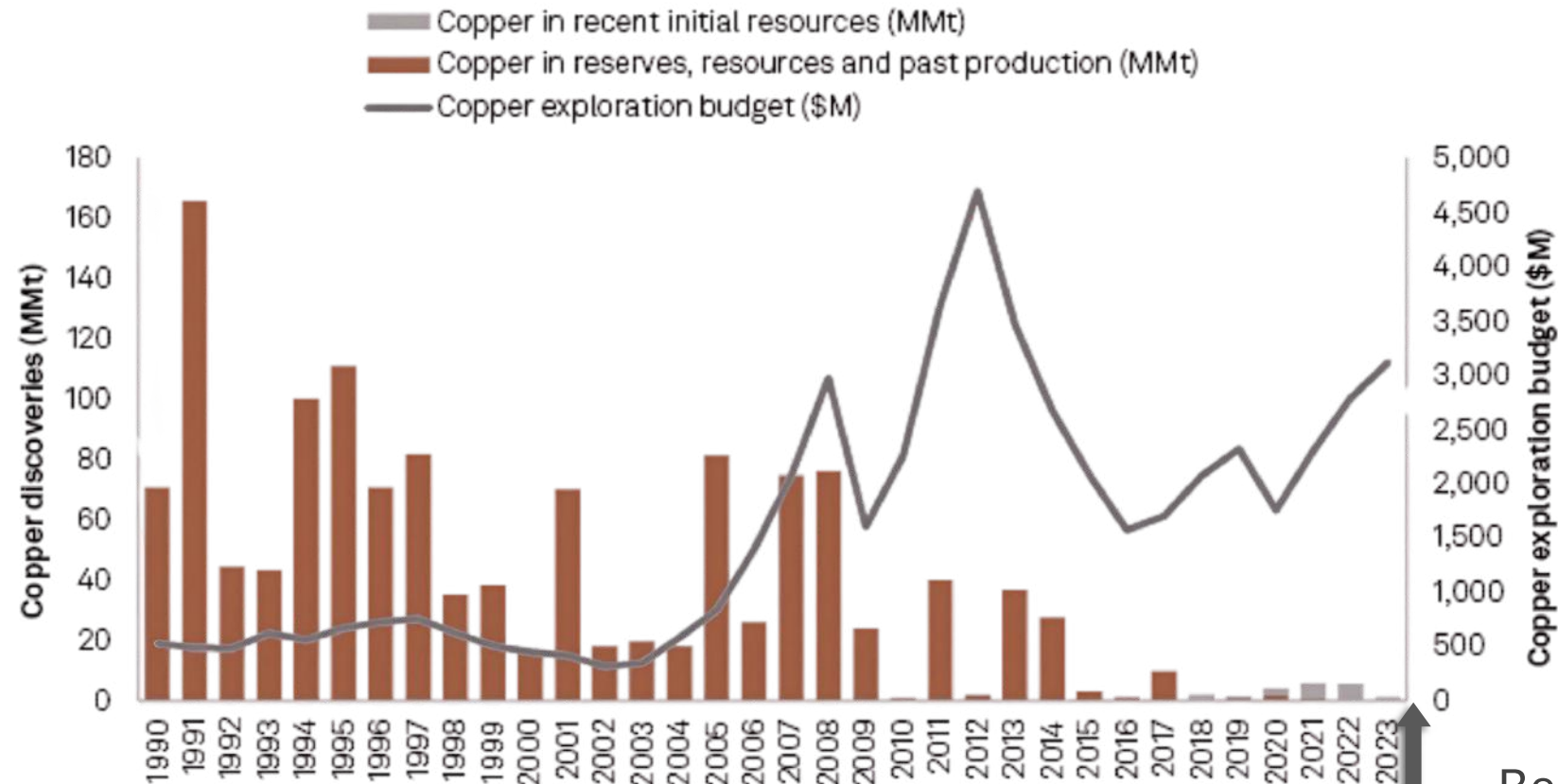
And...it is set to be 6Mt in deficit by 2030*

- The 10 largest Cu mines produce 4.7Mt of copper annually
 - 10+ new world class copper mines need to come online before 2030 – this will not happen



The Significance of a New Copper Discovery

Major copper discoveries, 1990–2023



As of June 11, 2024.

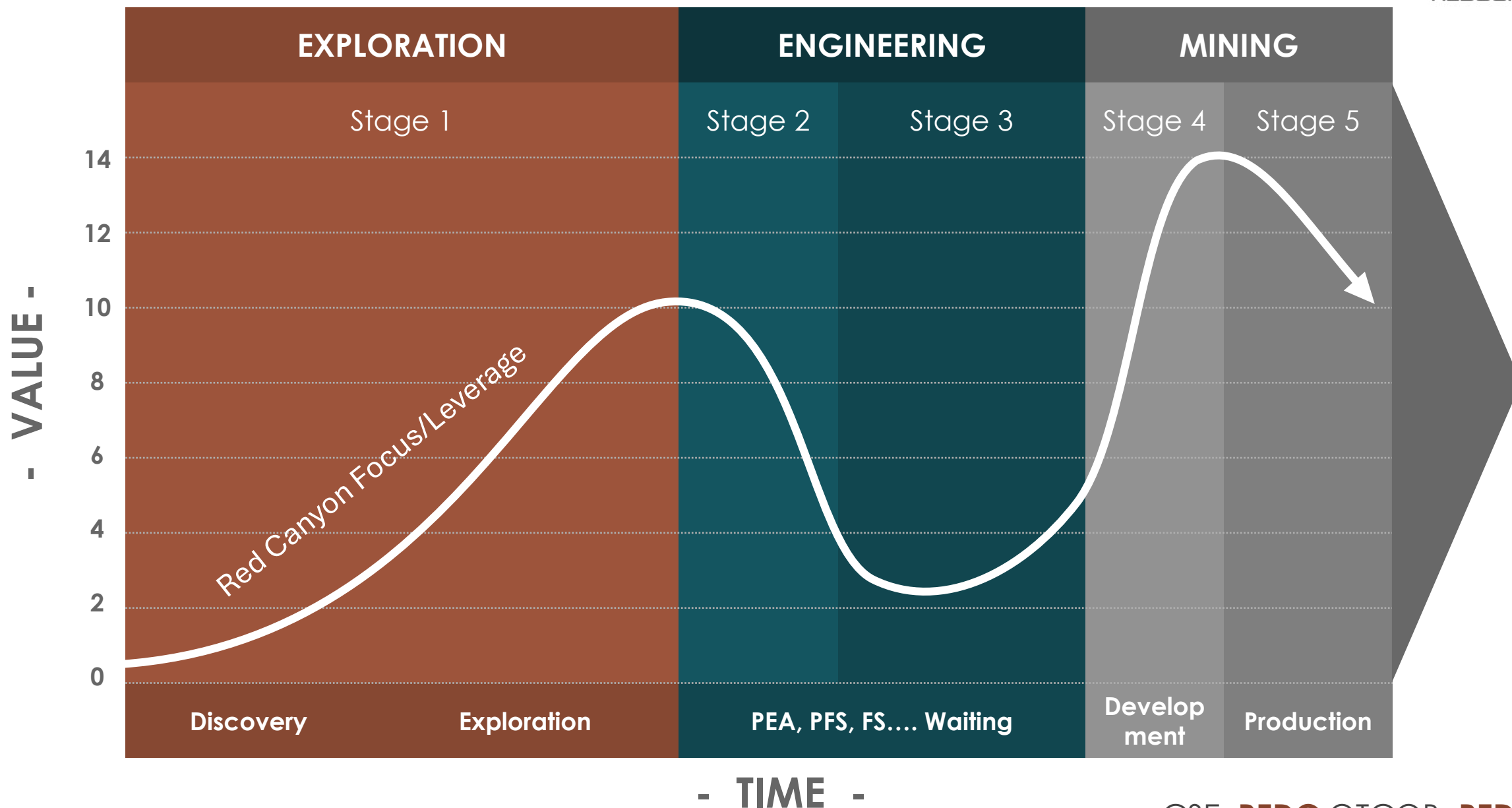
MMt = million metric tons; \$/t = dollars per metric ton.

Source: S&P Global Market Intelligence.

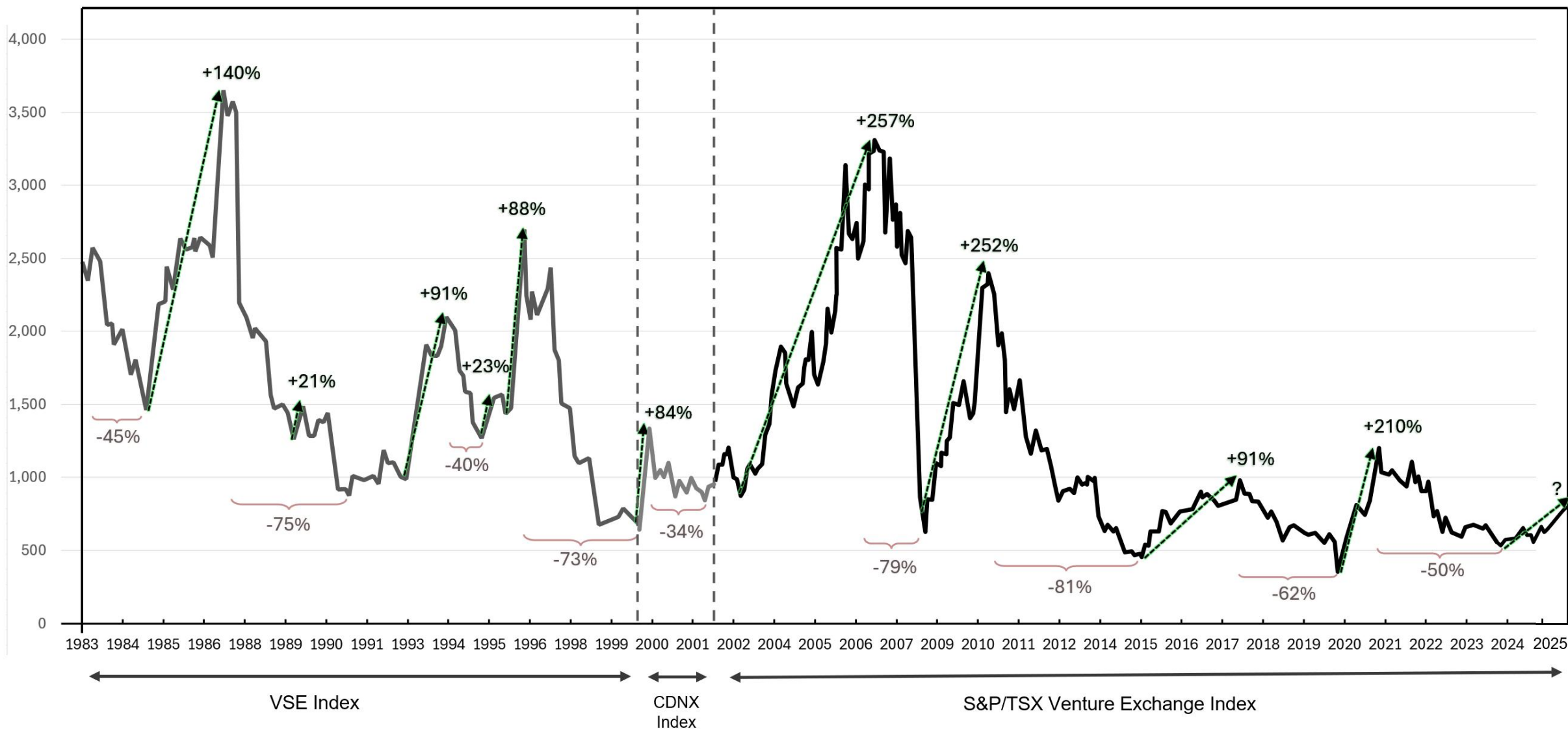
© 2024 S&P Global.

Red Canyon's 2024
Kendal Discovery

Mineral Exploration to Mining Life Cycle



Small Cap Cycles – Now is the time



Capital Structure

55.1M

Outstanding Shares

20.9M

Management

9.8M*

Warrants

4.5M*

Options

\$7.5M*

Market Cap

~\$1.7M*

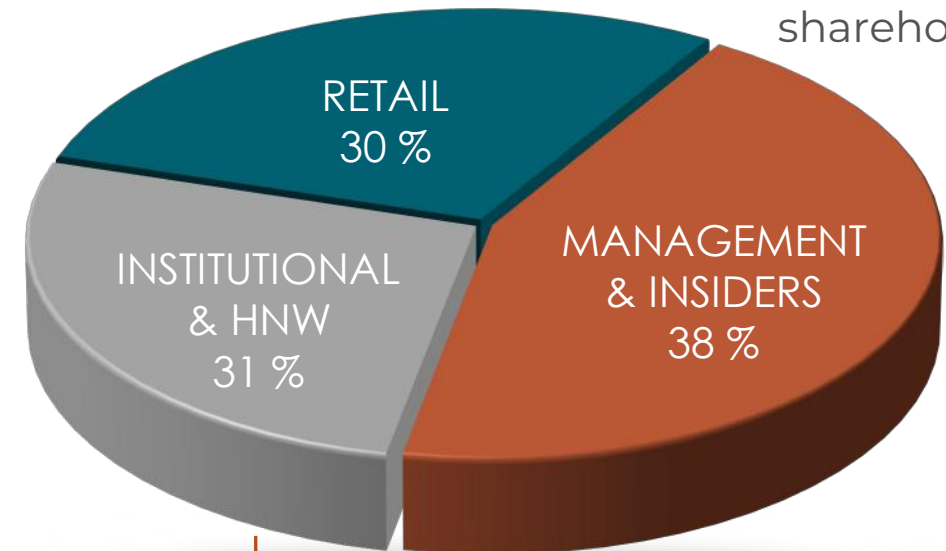
Cash

* As of May 5, 2025



~62% of shares

Held by 10 largest shareholders



Red Canyon Resources is a NewQuest Capital Group company
Visit: www.nqcapitalgroup.com for more information

Team



Wendell Zerby BSc, P. Geol | **Chairman & CEO**

- 30+ years of combined experience in capital markets, mining and mineral exploration / development
- Former President and CEO of Exeter Resource Corp, bought by Goldcorp/Barrick in 2017

Caleb Stroup MSc, AIPG | **US Technical Lead & Director**

- Geologist with over 15 years experience, focused expertise in the Western US
- Former senior Geologist for Kinross Gold; currently CEO of Headwater Gold

Alistair Waddell BSc (Hons.), MAusIMM | **Director**

- 30+ years of diverse international mineral exploration experience
- Former VP Greenfields Exploration for Kinross Gold Corp.
- CEO of Inflection Resources and Chairman of Headwater Gold

Cecil R. Bond CPA, CA | **Director**

- Chartered Professional Accountant with over 25 years of global experience in the junior resource and mining industry, serving as a director or senior executive of companies listed on the TSX, TSX-V, ASX, AIM and NYSE markets.

Dr. Craig J.R. Hart PhD, FSEG, FGAC | **Chief Geoscientist**

- Internationally recognized exploration geoscientist; specialized in Cu - Au porphyry and Intrusive hosted Gold systems
- Former Director of MDRU-Mineral Deposit Research Unit at the University of British Columbia (UBC)
- Chairman of Snowline Gold

Christopher J. Wild P. Eng | **Exploration Manager**

- 35+ years experience in mining and mineral exploration
- Former Project Manager/Chief Geologist for KGHM, Ajax Copper Project; Chief Mine Geologist for Imperial Metals Mount Polley Copper-Gold Mine.

Lauren M. Roberts PE | **Director**

- Professional Mining Engineer with over 30 years of experience in the global mining industry.
- Previously held senior positions for Kinross Gold, Barrick Gold and Hecla Mining

Sandra Wong CPA, CGA | **CFO & Corporate Secretary**

- Chartered Professional Accountant with 20+ years of experience with TSXV and CSE listed companies

Advisors



Dr. Alan Wilson | PhD, CGEOL **Technical Advisor and Principal Consultant**

- Over 30 years experience, including senior roles with a number of the world's largest mining companies
- Expert in Alkaline Copper Gold porphyry systems

Tero Kosonen | MSc. Economics **Advisor**

- Co-Founder of NewQuest Capital, a private equity/venture capital group, non-Executive Director for Inflection Resources & Headwater Gold. And Chairman of Finex Metals.
- 25 years of experience in management roles, entrepreneurial ventures & investments in natural resources.

Yale Simpson | BSc. **Corporate Advisor**

- 35 years experience as a senior geologist, exploration manager, CEO, and Chairman of companies involved in Australia, Africa, Canada, Eastern Europe and South America
- Co-Chairman of Extorre Gold Mines Ltd and Exeter Resource Corp., both acquired by major mining companies

Dr. Dan Core | PhD **Technical Advisor**

- Co-founder of Fathom Geophysics, which specializes in geophysical and geoscience processing and targeting services to the mineral sector.
- Dan has extensive experience targeting for an array of mineral deposit types, including copper porphyry systems

North-American Focus

British Columbia

Premier Copper-Gold district with active large-scale mining operations



Western United States

Multiple Copper jurisdictions with world-class operating mines



Kendal Project

Peak Project

Inzana Projects

Ping Project

Scraper Springs Project

Gray Hills Project

Keg Project

Kendal Project

STRATEGIC CLAIM POSITION

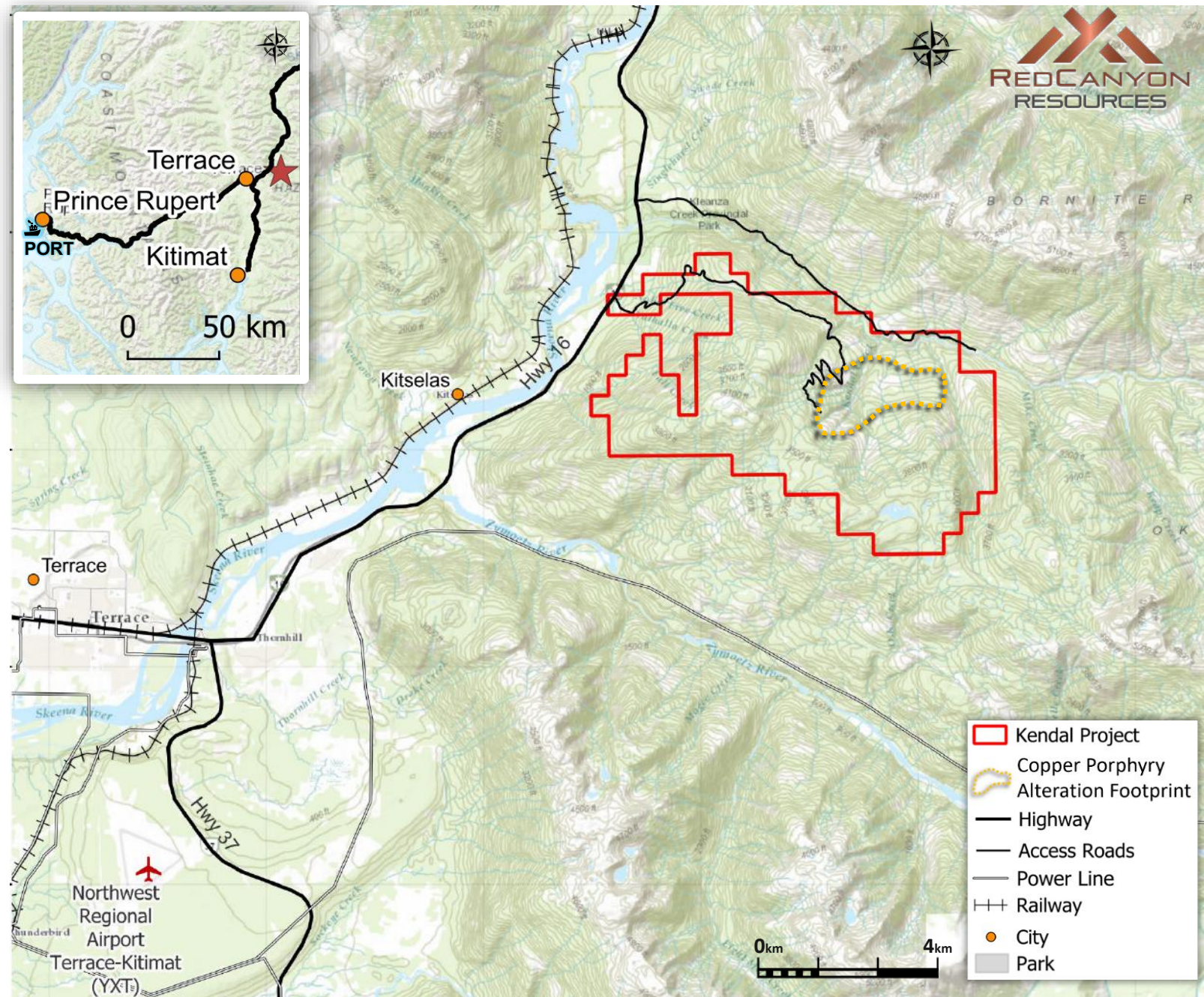
3,582 HECTARES

100% OWNED

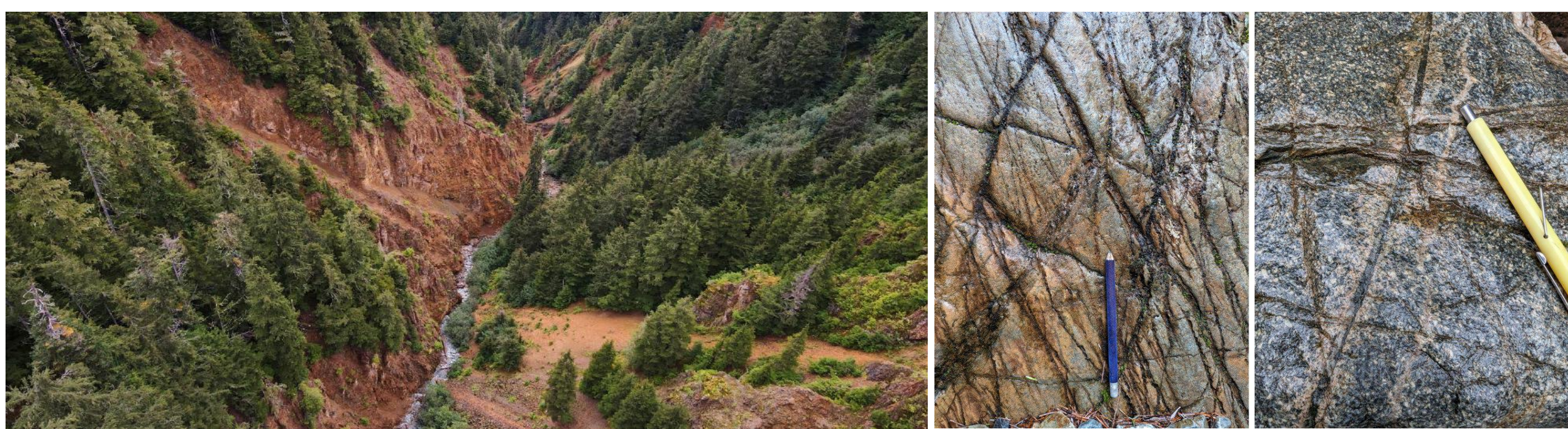
Previously unrecognized surface alteration of large copper – moly porphyry system

Discovery confirmed in first ever drill program completed Fall 2024

Excellent infrastructure offers significant advantages to improve margin potential



Kendal Project

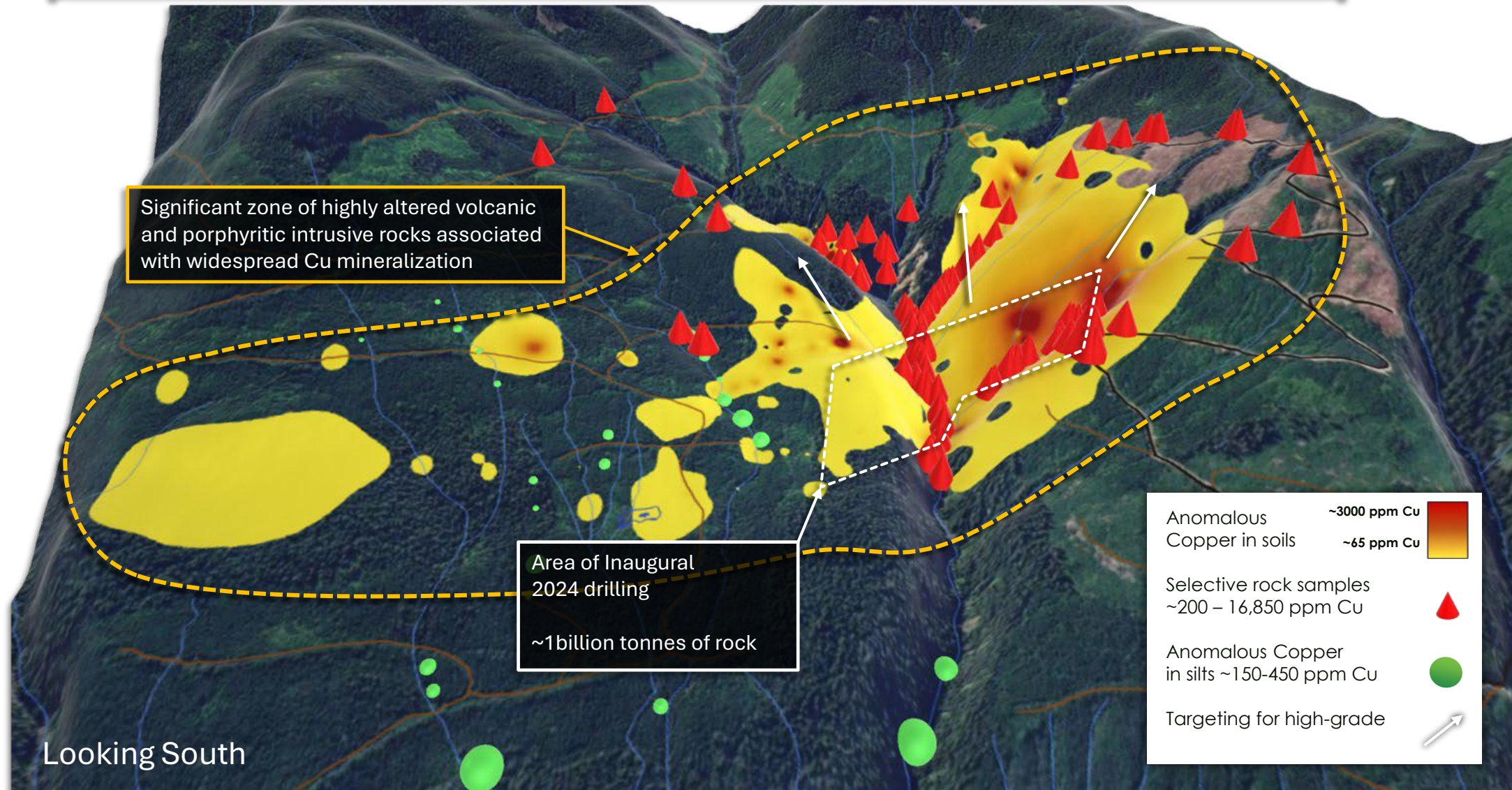


Dr. Craig Hart, Chief Geoscientist of the Company, states: *"The extensive mineralized alteration footprint encountered with these first-ever drill holes at Kendal, indicates a porphyry system with a massive amount of fluid flow. The large alteration footprint and corresponding multi-generations of hydrothermal veins give us confidence about the scale of the system and the potential to target towards a high-grade core."*

Wendell Zerb, the Chairman and CEO of the Company, states: *"Copper–moly porphyry mines worldwide are some of the largest, highest value sources of metal and it's especially rare for a small cap mineral exploration company to discover and control 100% of potentially a large copper-moly system, with importantly exceptional infrastructure".*

Kendal Project

3.0 km



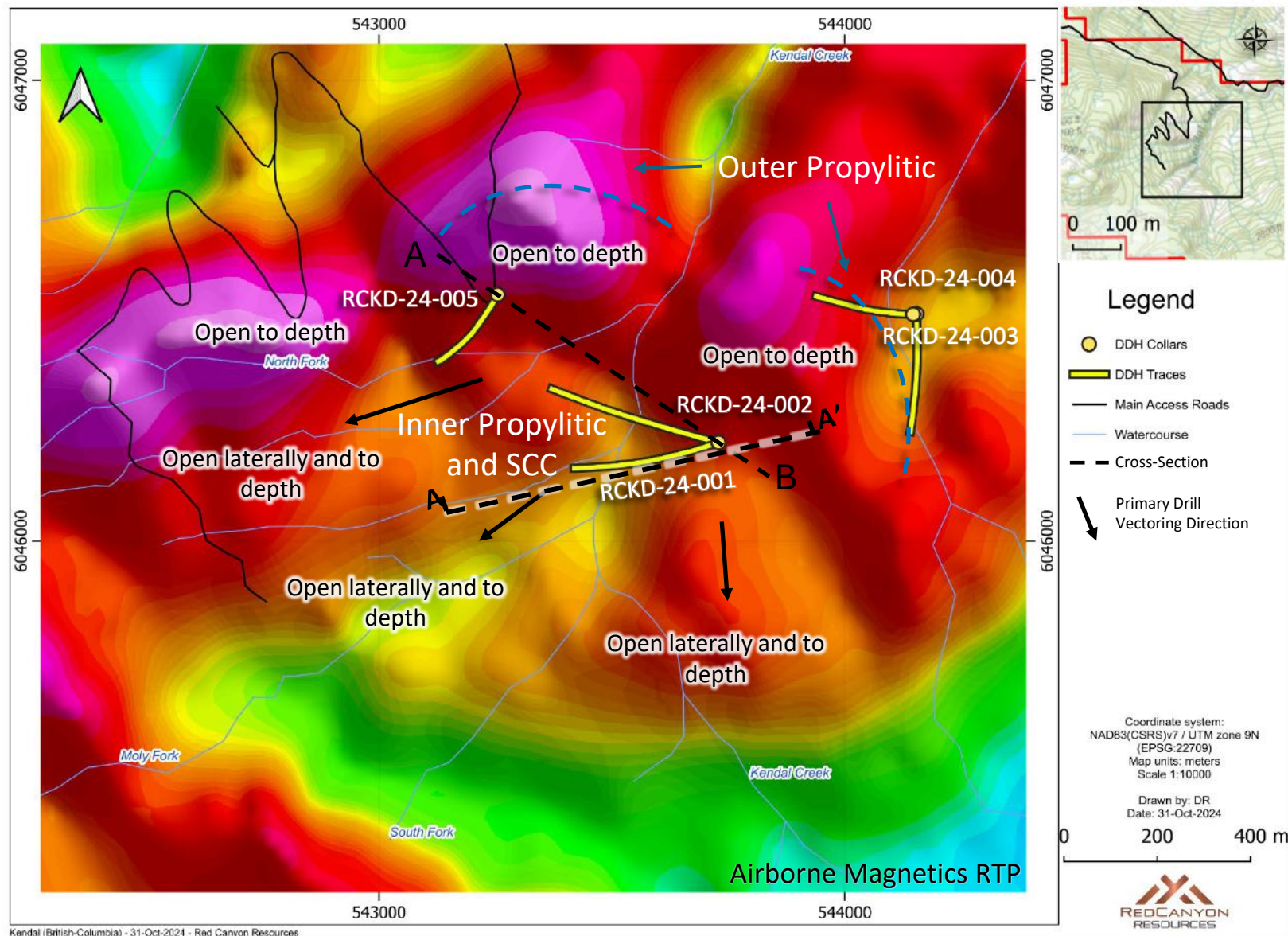
Kendal Inaugural Drill Program – Fall 2024

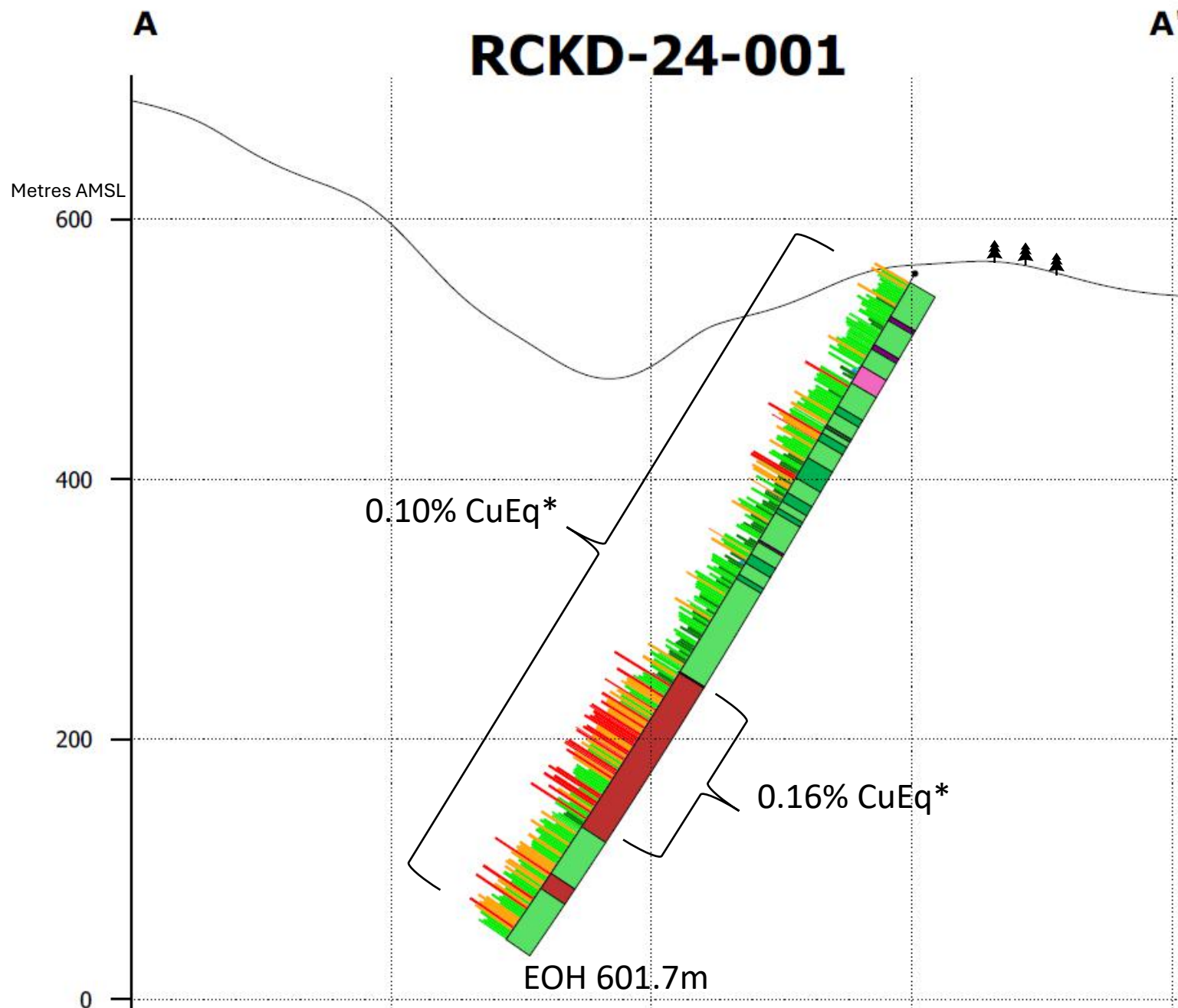


Five diamond drill holes totaling 2,562 m, tested the NE portion of the large 2.5 km by 1.5 km surface alteration.

All drill holes intersected significant porphyry-style alteration, multiple vein sets and variable visual copper and molybdenum (moly) mineralization throughout.

Drill vectoring studies suggest Kendal system is open to depth and laterally to south and west.





Lithology

- Andesite
- Porphyritic Andesite
- Diorite
- Quartz Diorite
- Dyke

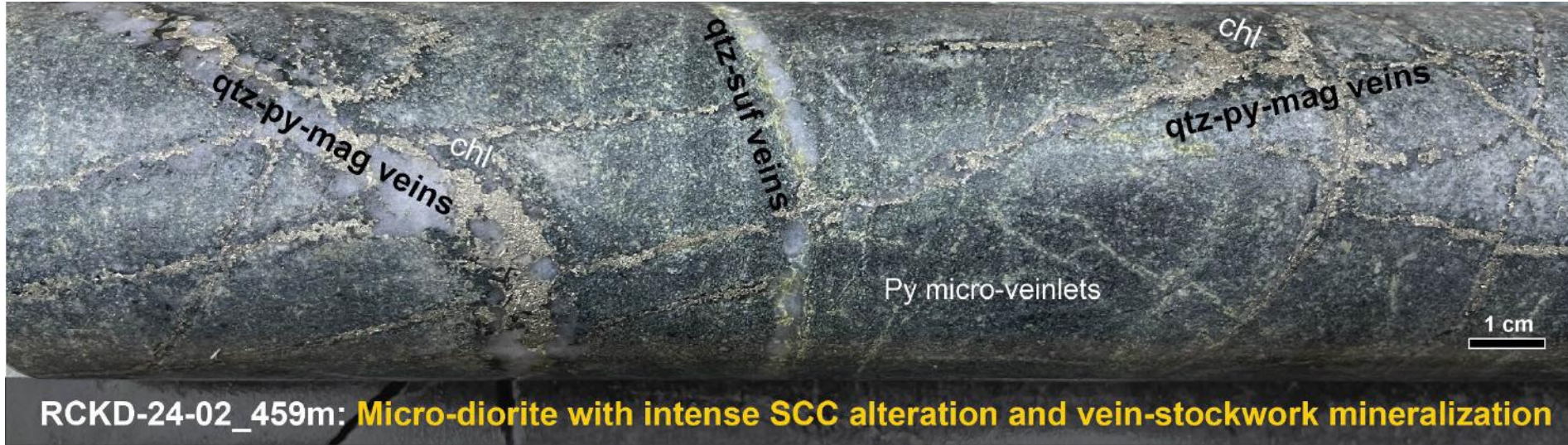
Copper Equivalent (ppm)

- < 100
- < 250
- < 500
- < 1000
- < 1500
- ≥ 1500

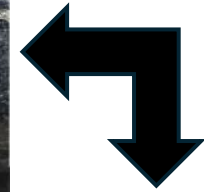
0m 200m

RCKD-24-001 at Kendal returned 0.10% CuEq* starting from surface to 601.7 m, including 123.0 m grading 0.16% CuEq*

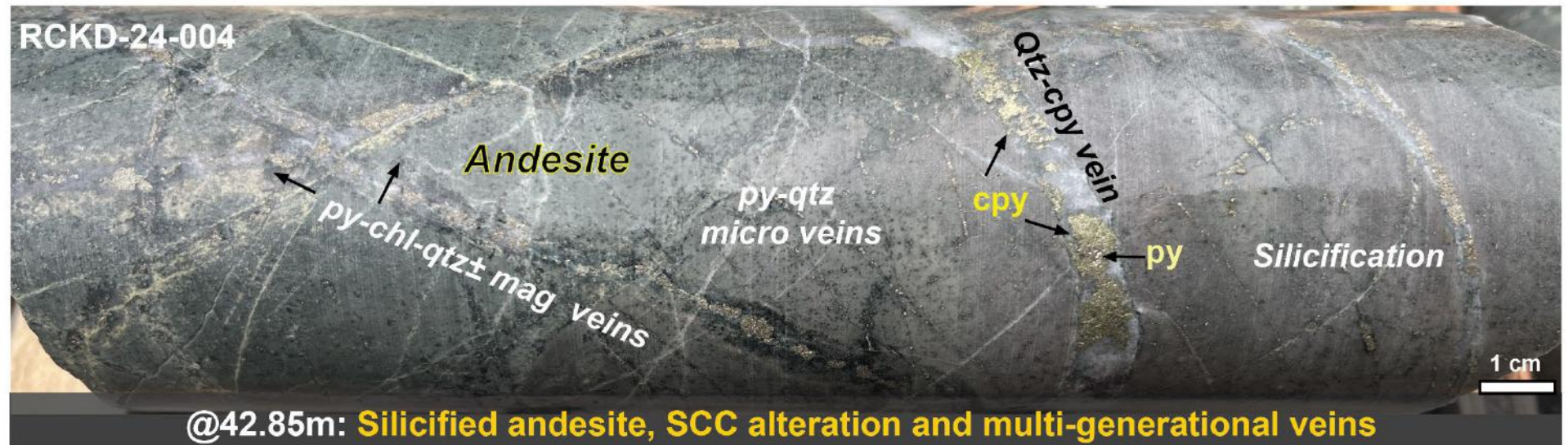
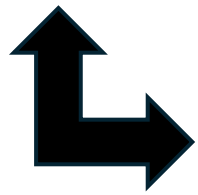
Extensive Mineral System



~750m
horizontal
distance
apart

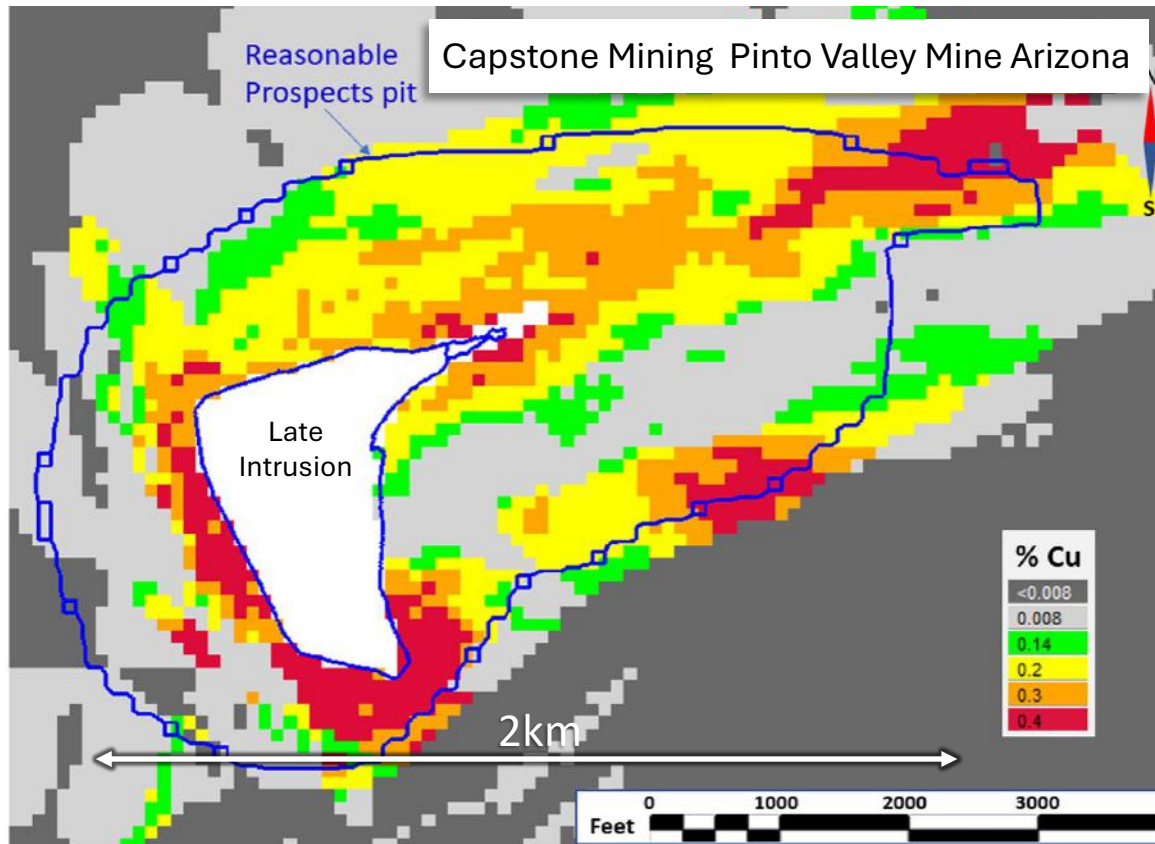


~325m
vertical
distance
apart



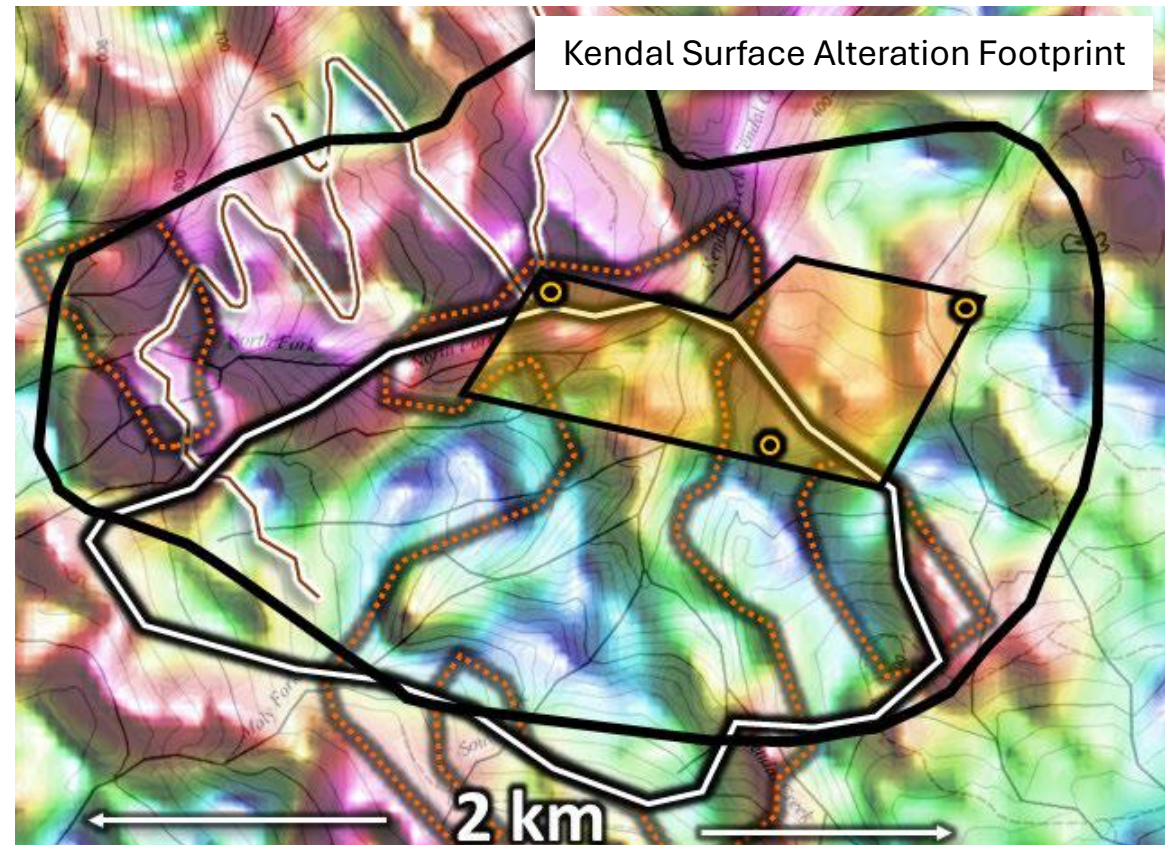
“Scratched the Surface”

Kendal Alteration Footprint Comparison with Pinto Valley Copper-Moly Deposit Footprint



Pinto Valley, Plan View of Block Model at Elevation 3050' with Cu % Grades. M&I Resources (2021) 1402 MT @ 0.29% Cu, 0.006% Mo. (source: Kirkham, 2021)

Images to Scale



600m

~605 MT

600m

Assume depth 600m, SG 2.8

Extent of pyrite alteration
2024 Area of drilling
Extent of magnetite destruction



Inzana Projects

STRATEGIC CLAIM POSITION

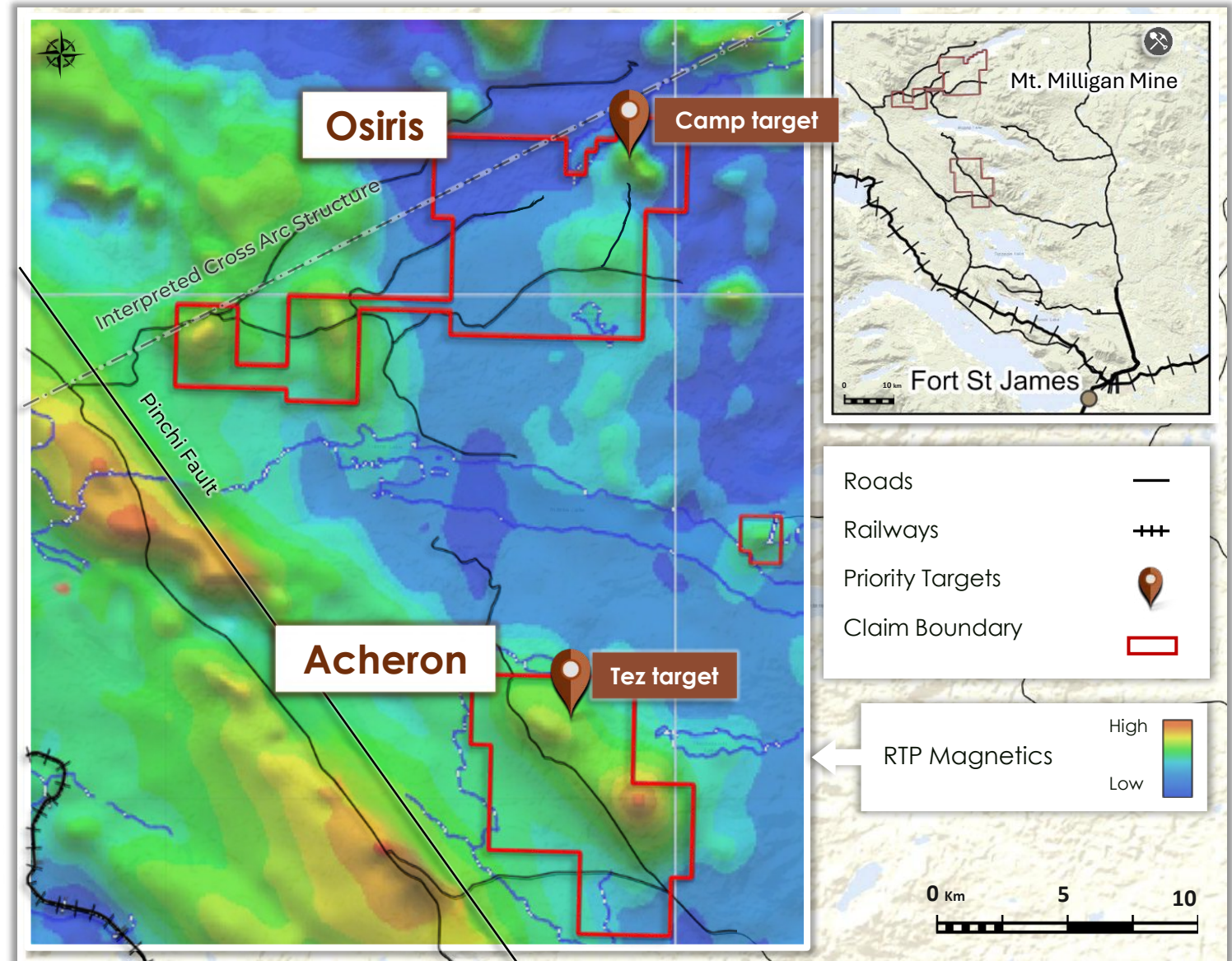
15,447 HECTARES

100% OWNED

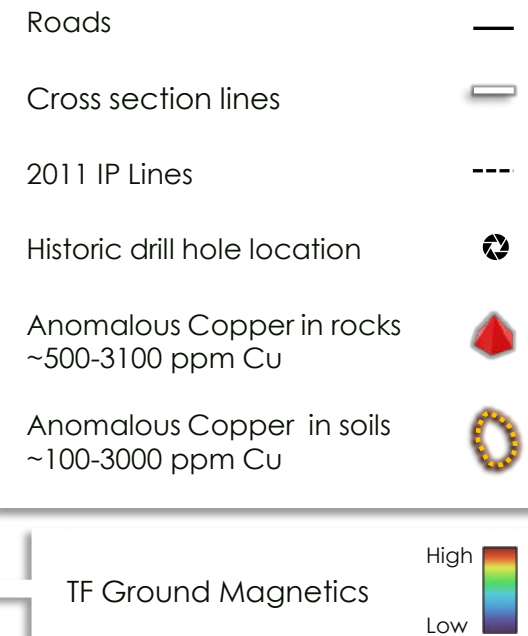
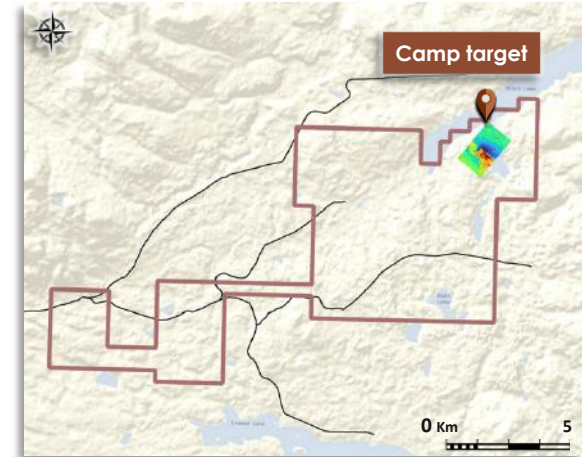
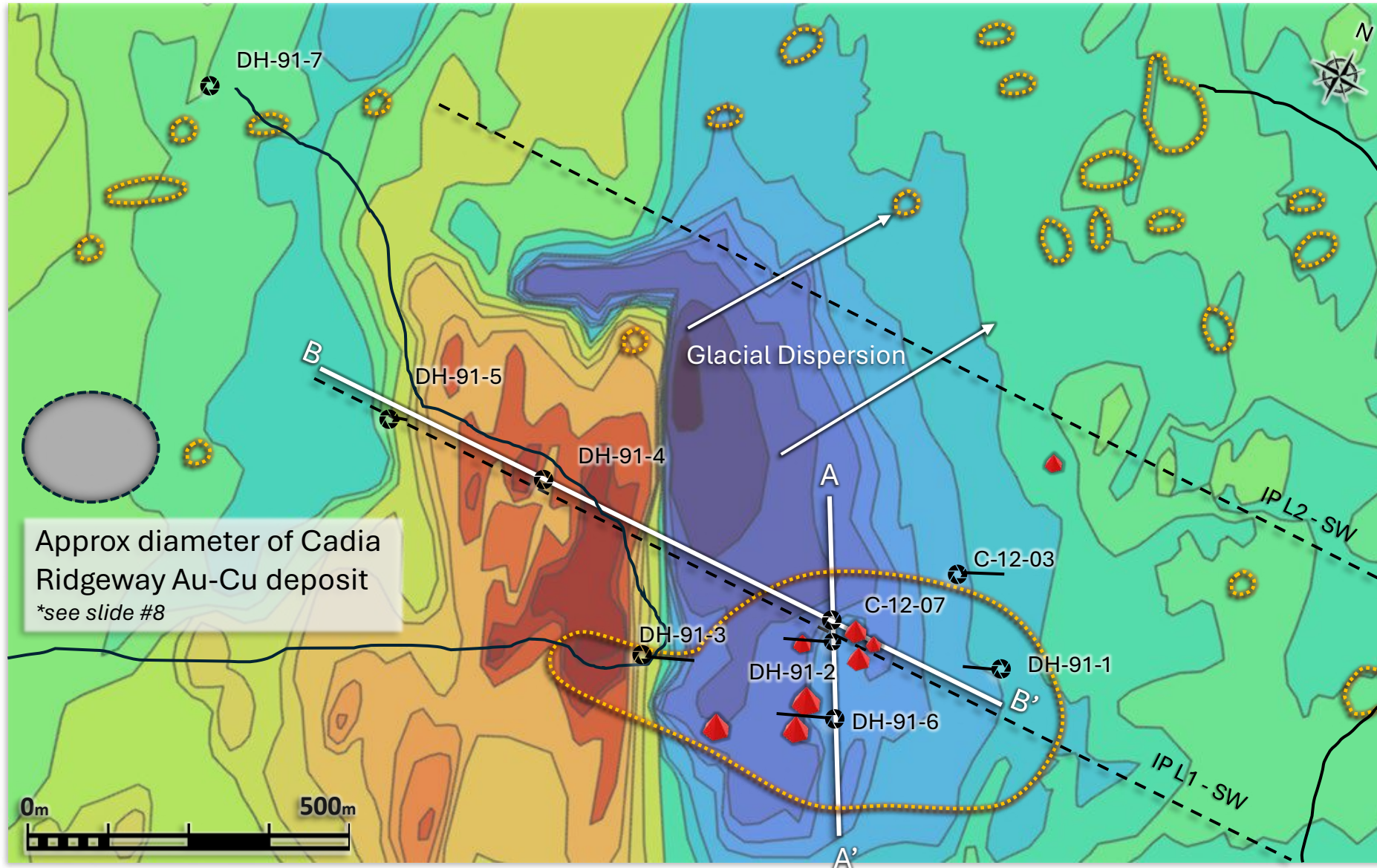
Quesnellia Island Arc Terrane bounded to the west by NW regional structures associated with Cu – Au deposits

Historical work identified significant Alkalic Cu – Au porphyry mineralization on surface and in shallow drilling.

Excellent infrastructure with road access throughout the area, including substantial recent expansion of logging road access.



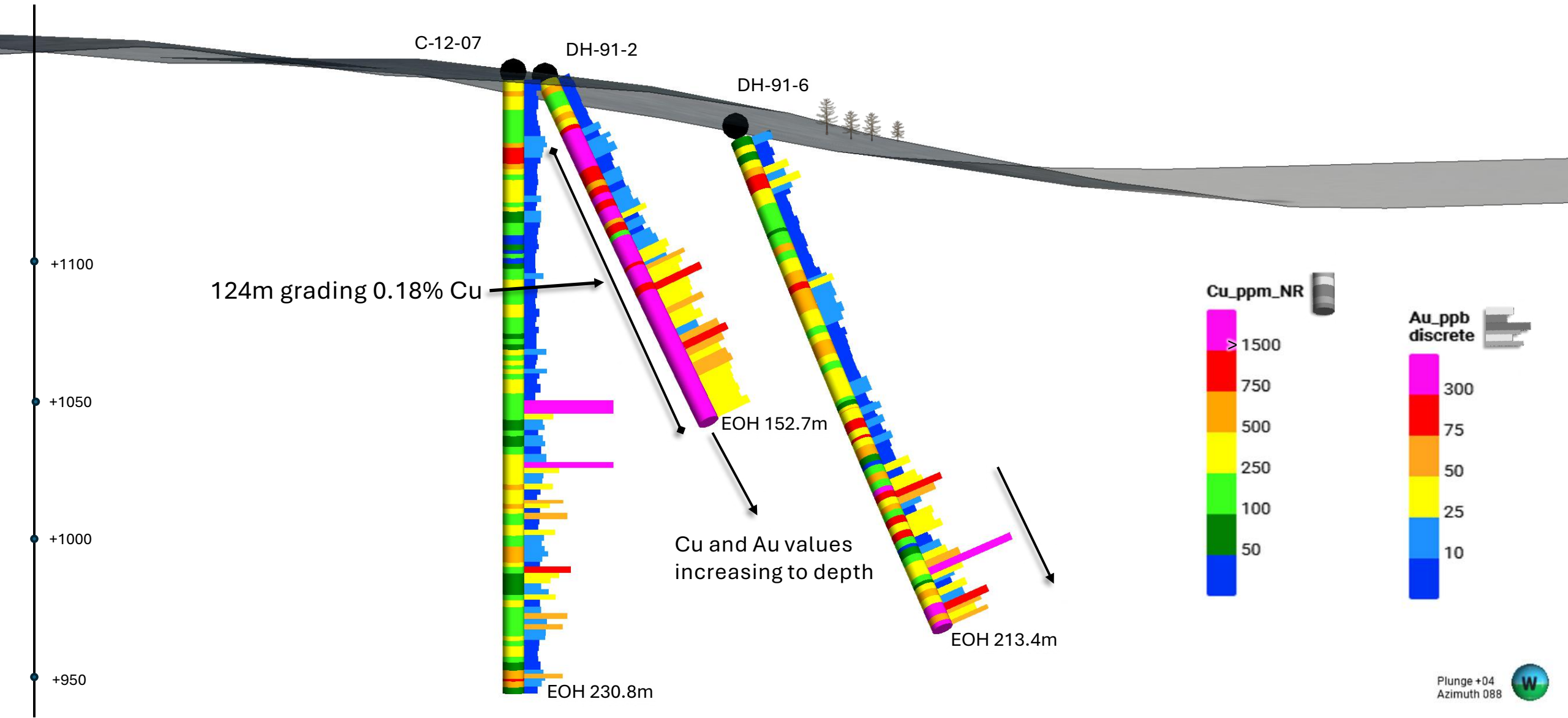
Camp Cu-Au Porphyry Target



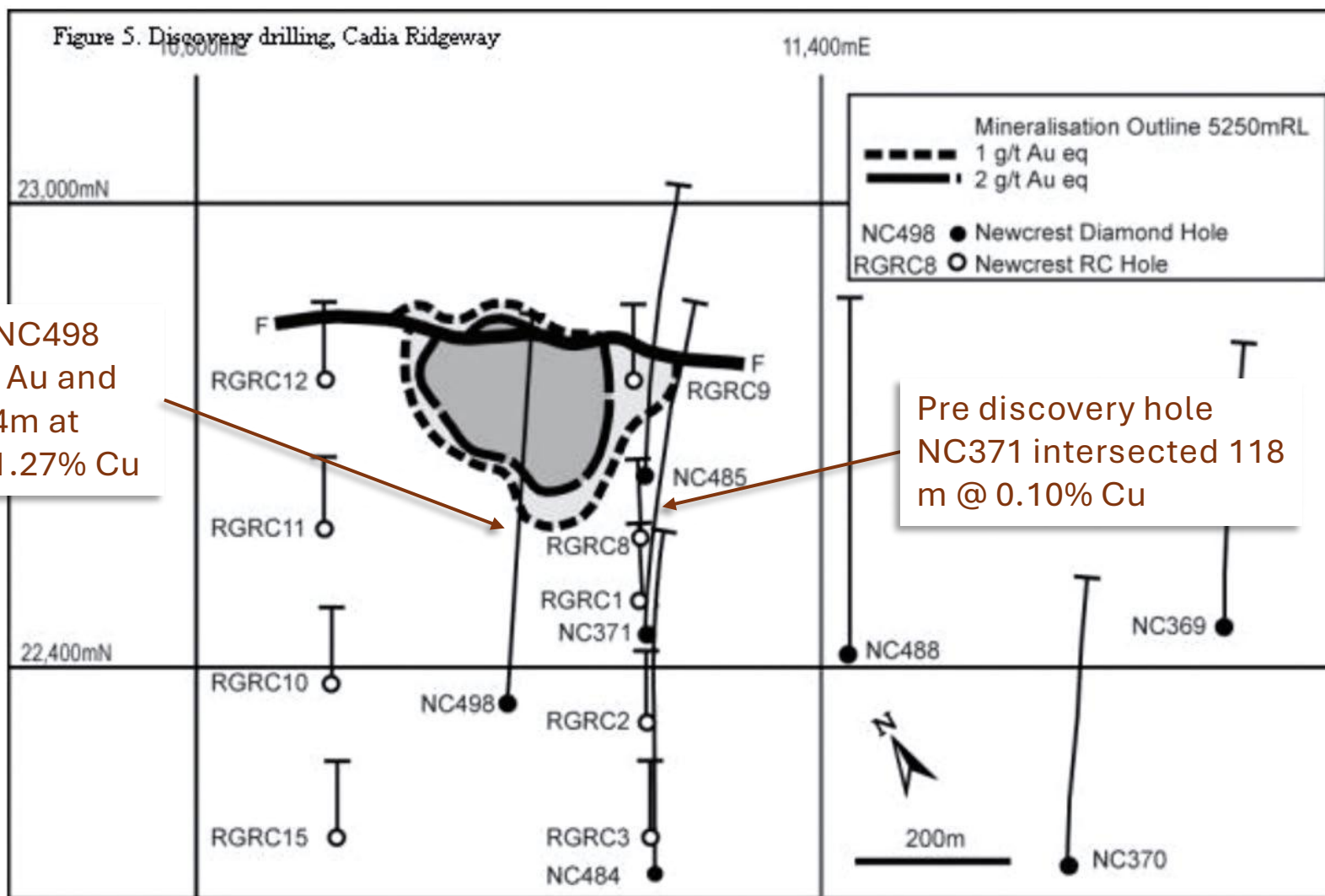
Camp Cu-Au Porphyry Target

A N-S Cross Section

A'

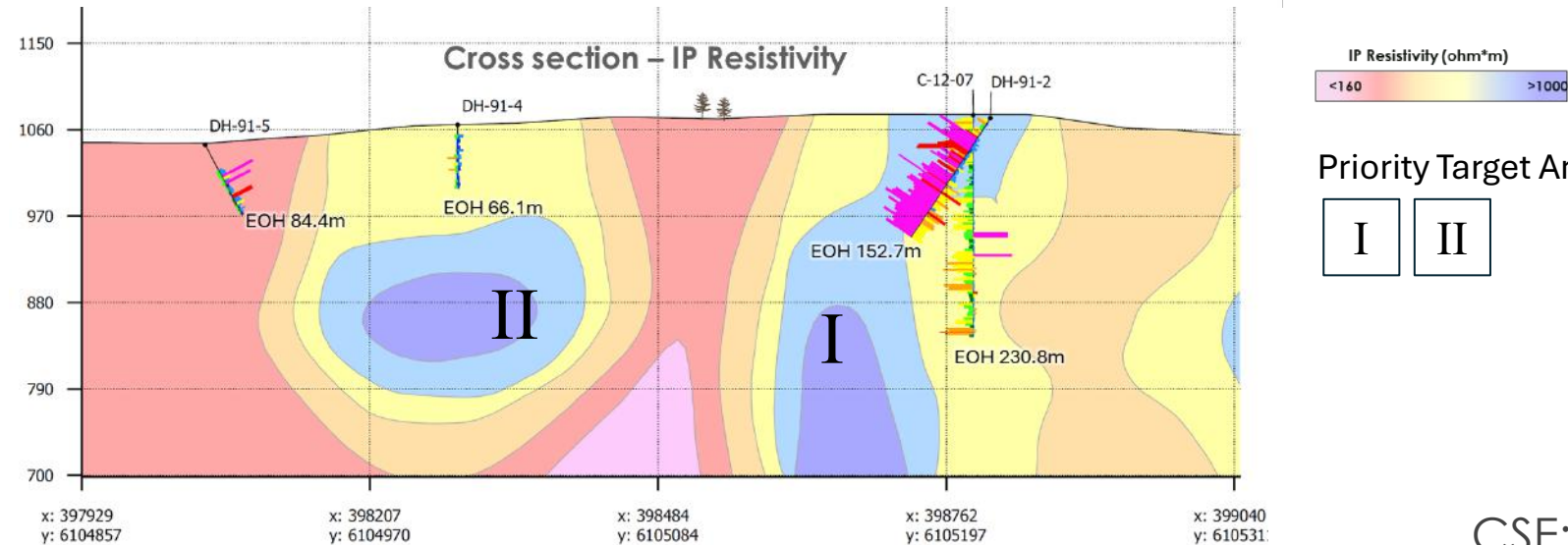
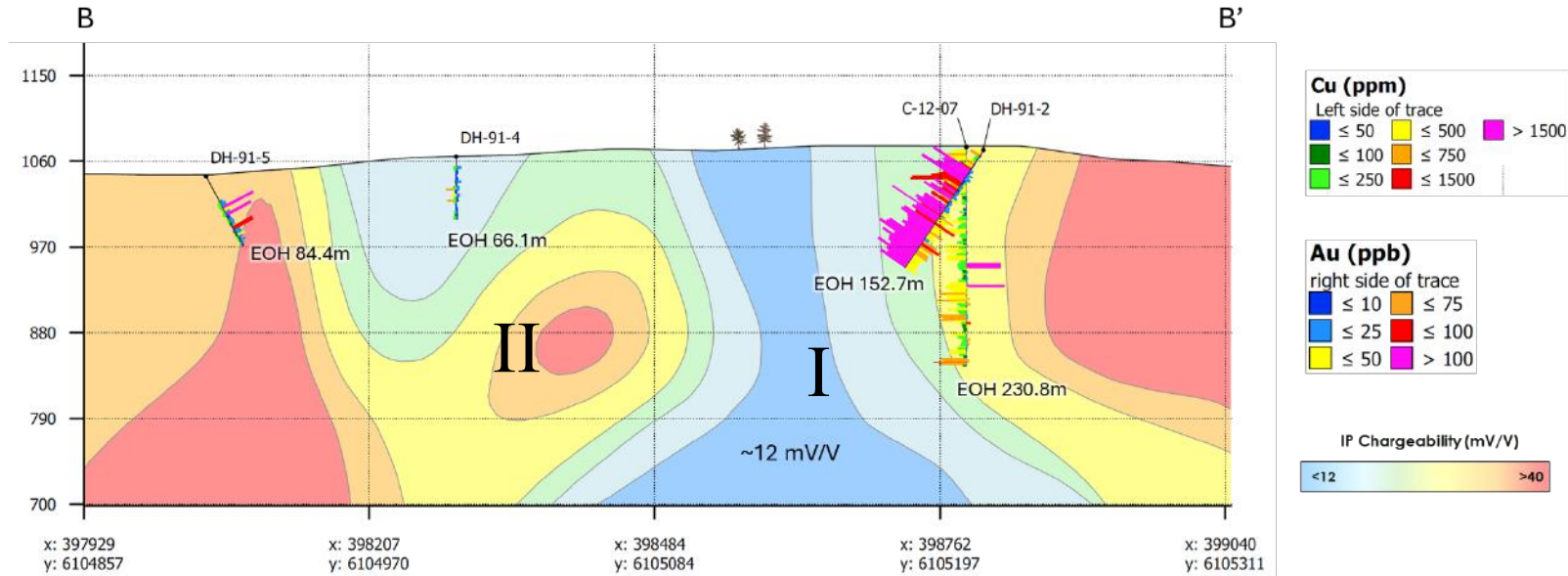


Cadia Ridgeway Alkalic Au-Cu Porphyry Discovery



Camp Cu-Au Porphyry Target

Cross Section – IP Chargeability



Priority Target Areas:

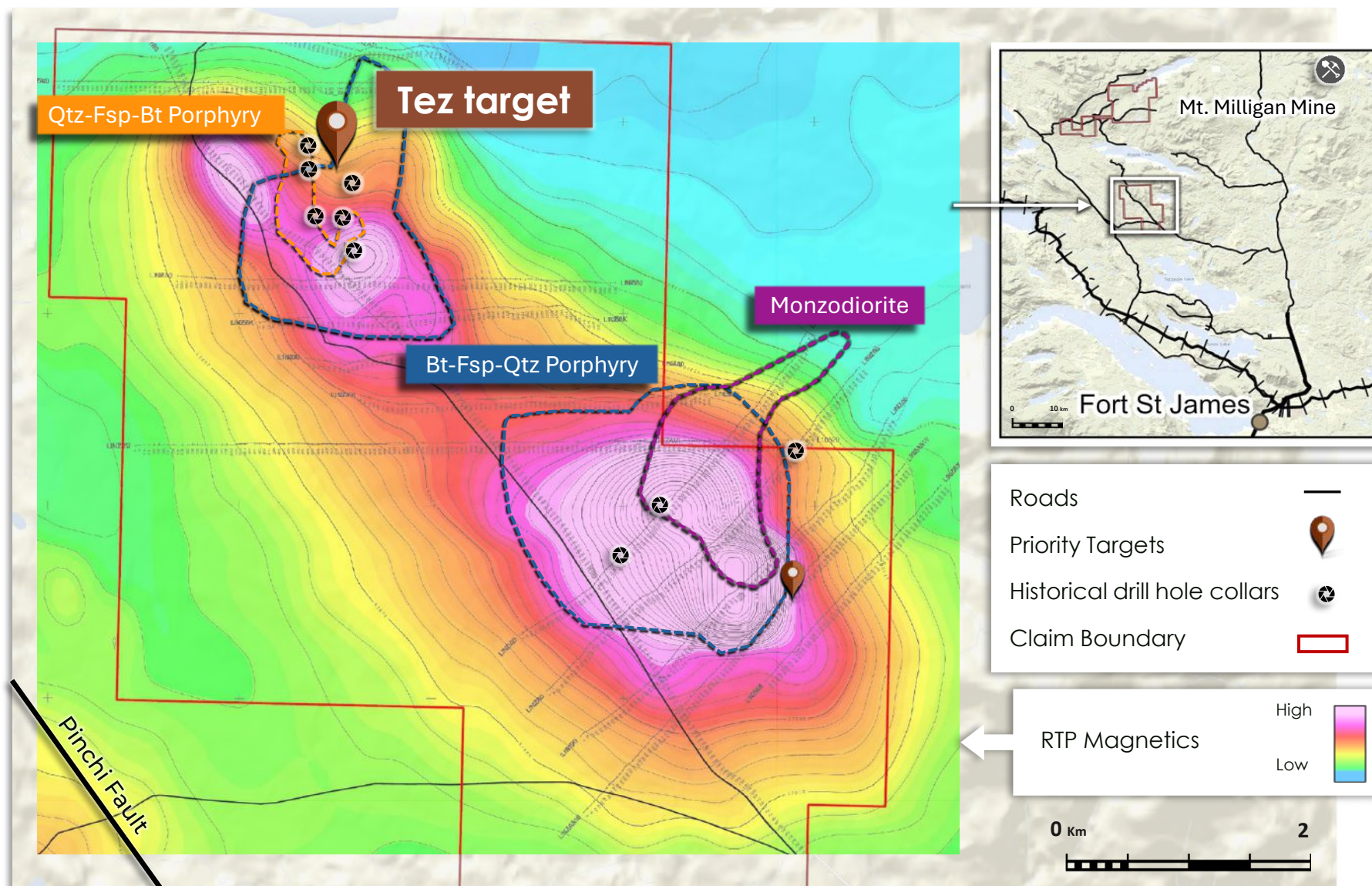


Tez Cu-Au-Mo Porphyry Target

Series of complex oxidized porphyritic intrusions associated with significant hydrothermal alteration and Cu-Au-Mo mineralization

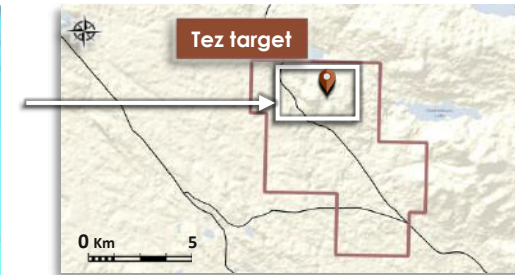
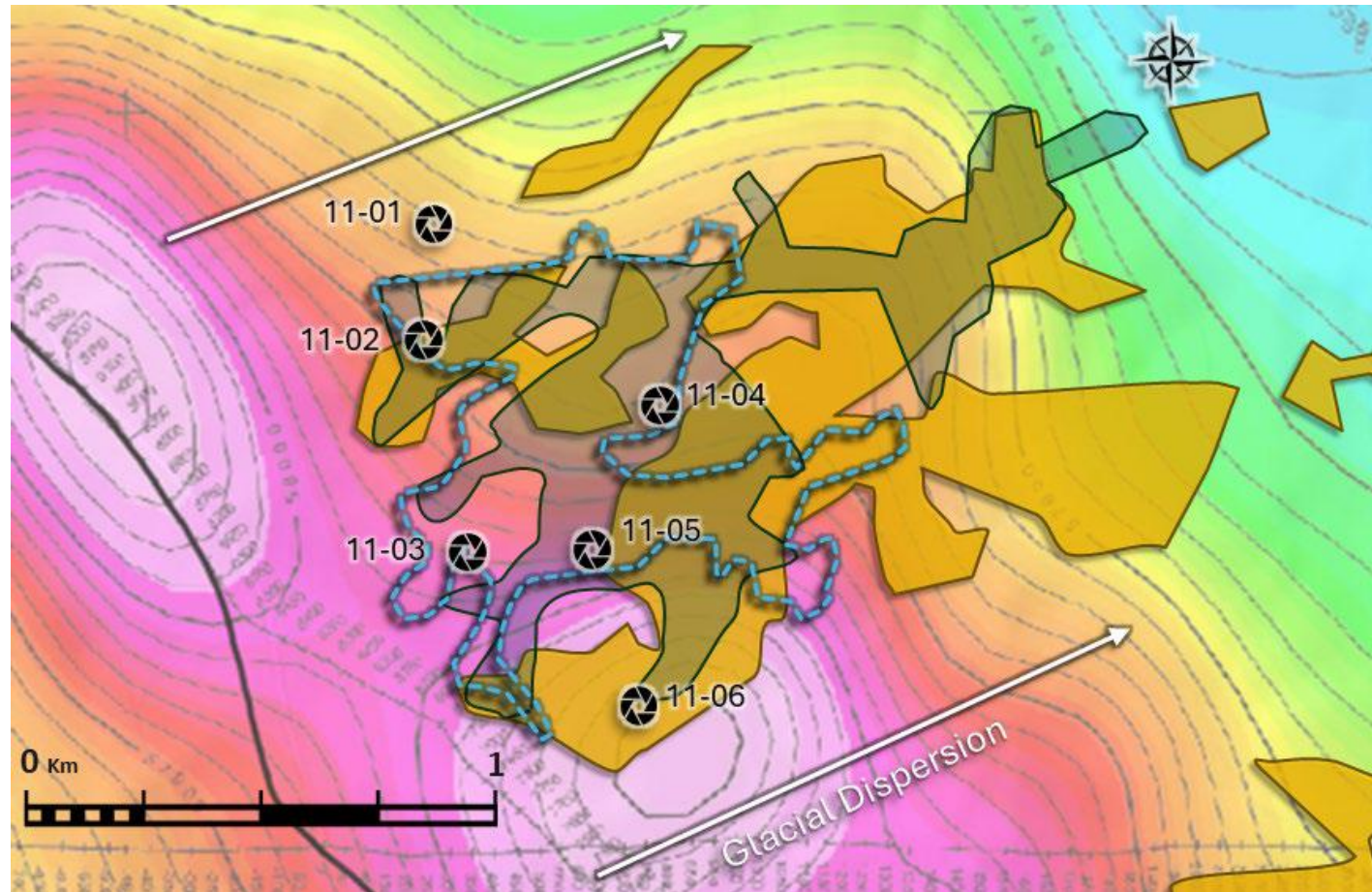
Historical shallow drilling identified mineralized Cu-Au-Mo system at Tez

Excellent infrastructure with road access that cuts through the project area.



Tez Cu-Au-Mo Target Geochemistry

Coincident copper, gold and moly soil geochemistry associated with multiple mineralized porphyry intrusions

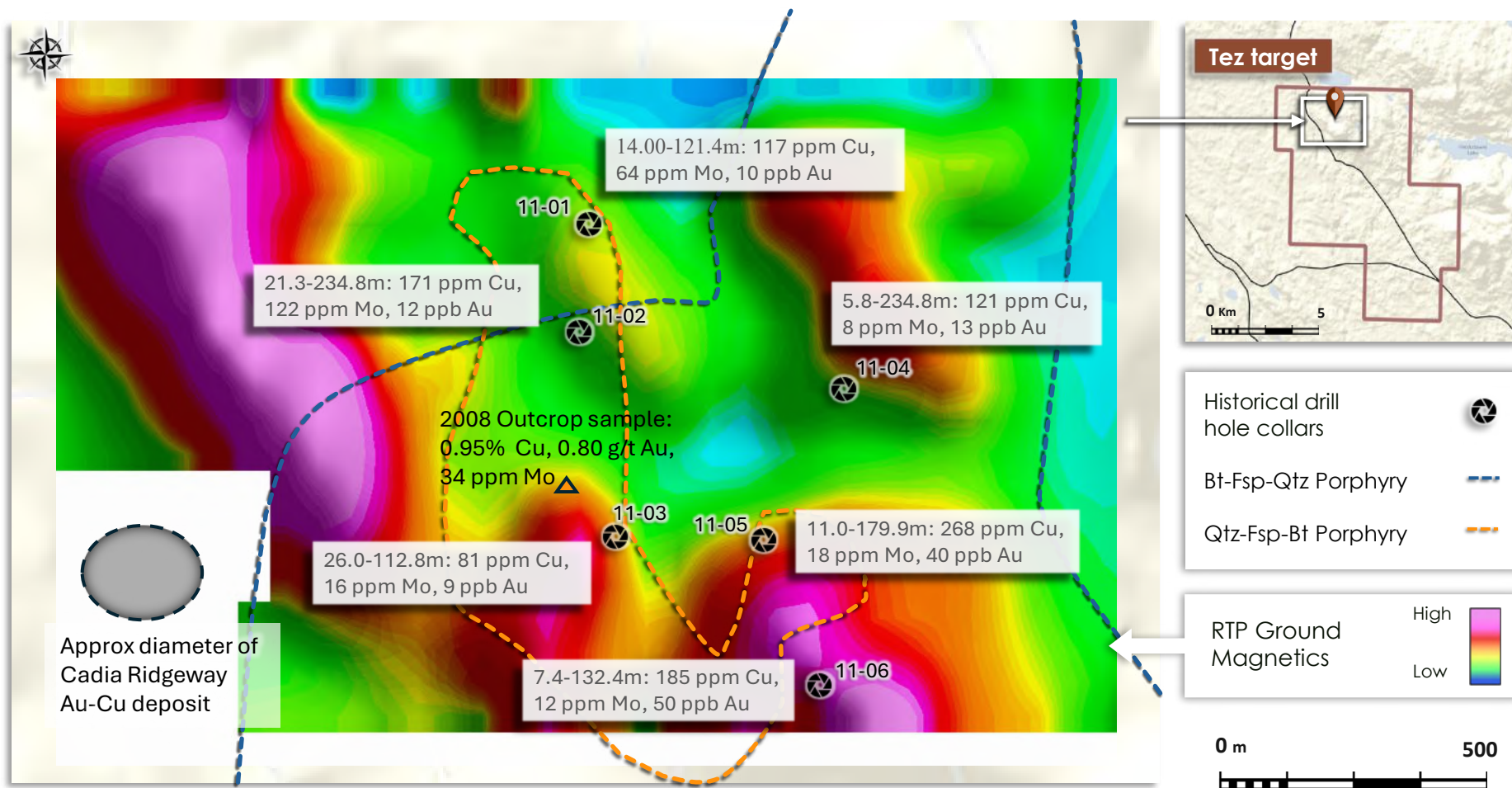


Tez Cu-Au-Mo Porphyry Target

Complex oxidized porphyritic intrusions associated with significant hydrothermal alteration and Cu-Au-Mo mineralization

Historical shallow drilling identified highly anomalous mineralized Cu-Au-Mo system

Excellent infrastructure with road access



Tez Surface Alteration Footprint

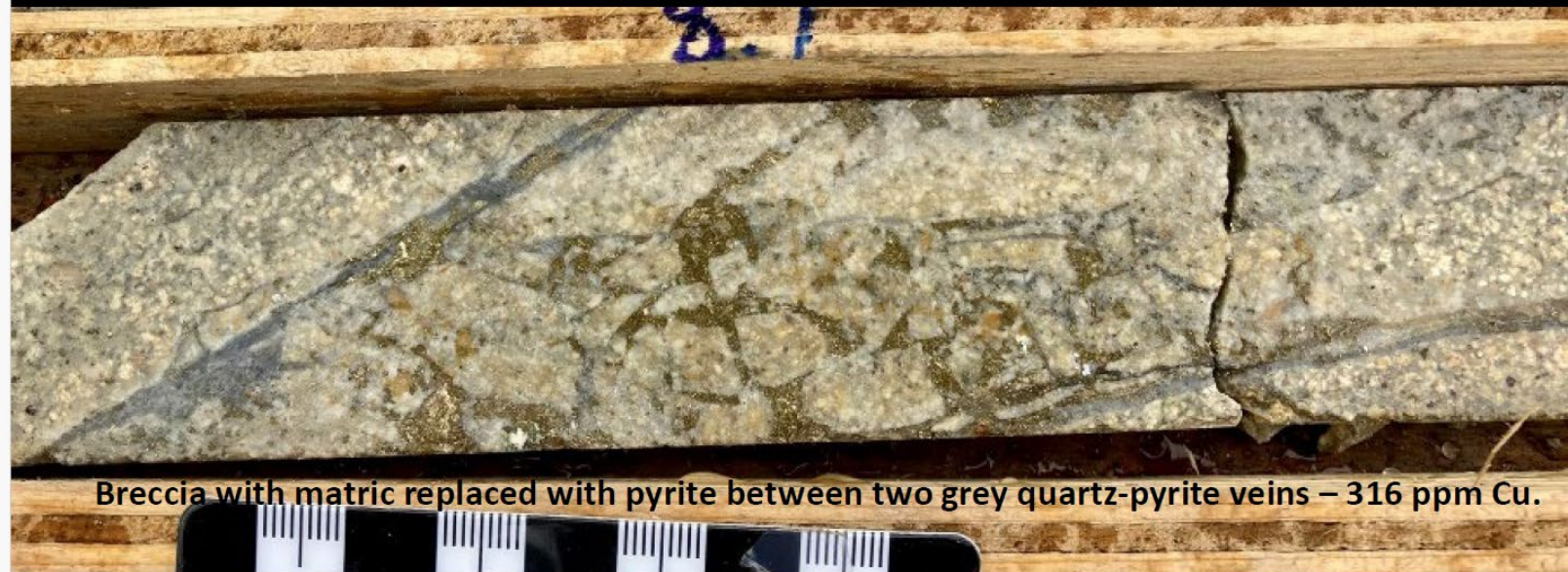


Tez Surface QSP Alteration Footprint

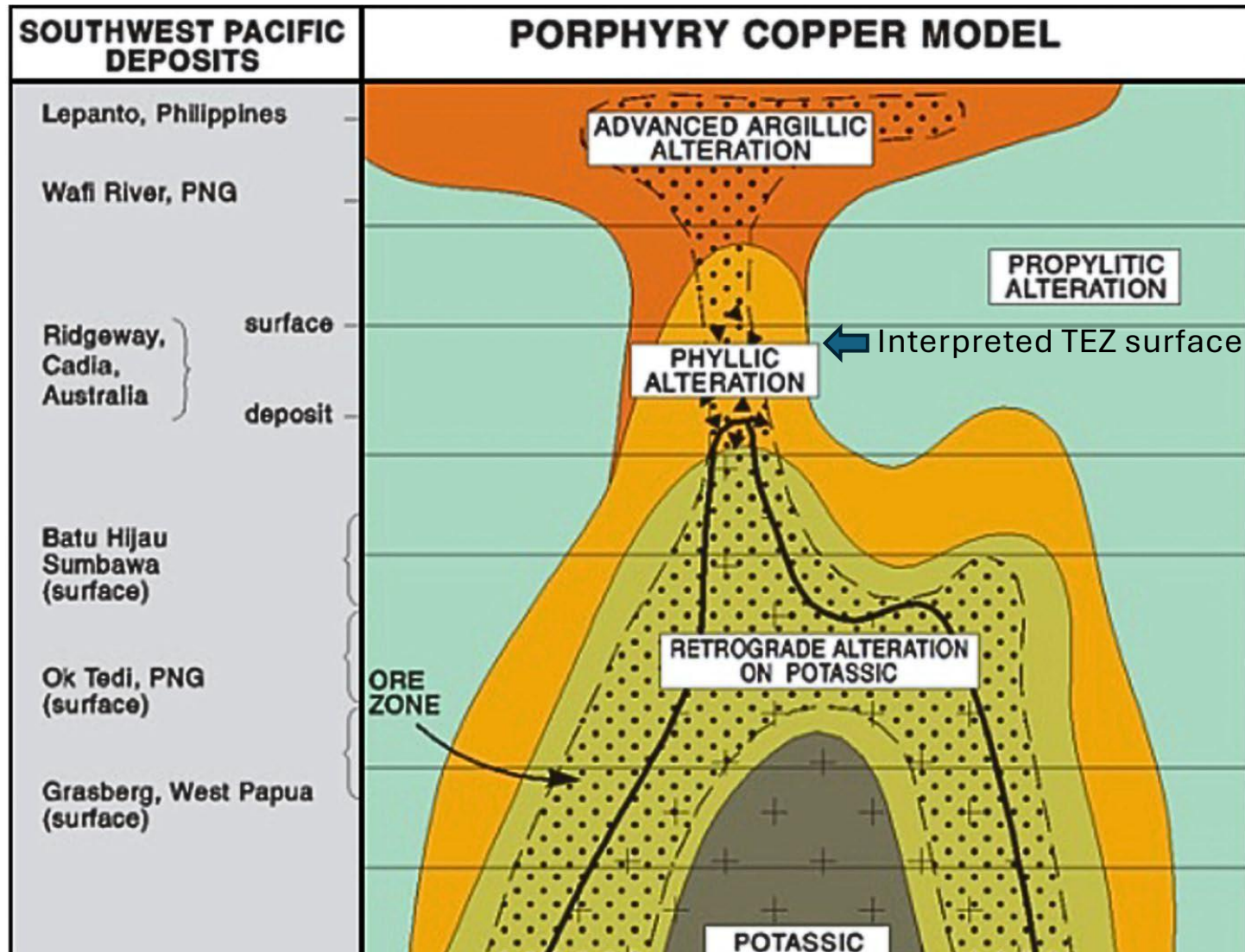


Looking South

Tez INZA DH11-02 Select Core Samples



Porphyry Copper model with Interpreted Tez Surface



Western U.S. Projects

Targeting under-explored mineral trends associated with world-class mines

Two projects, 100% owned. One project, option to earn 100%

Continuing to generate new projects in the western USA's most exciting Copper belts

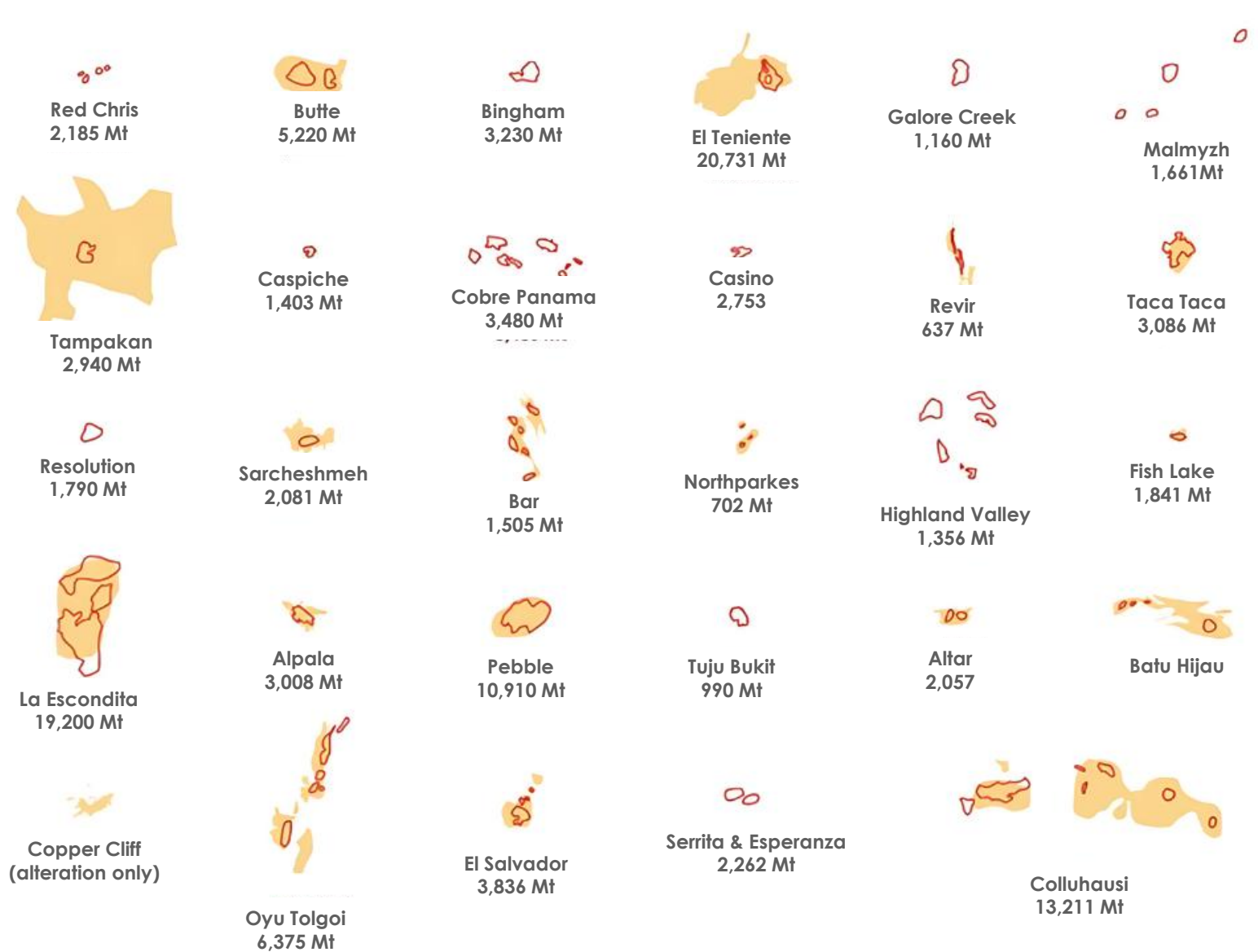


Scraper Springs Project



Scraper Springs Alteration Footprint

□ Orebody Footprint
 ■ Alteration Footprint
 0 5 10 20 km



Scraper Springs Project

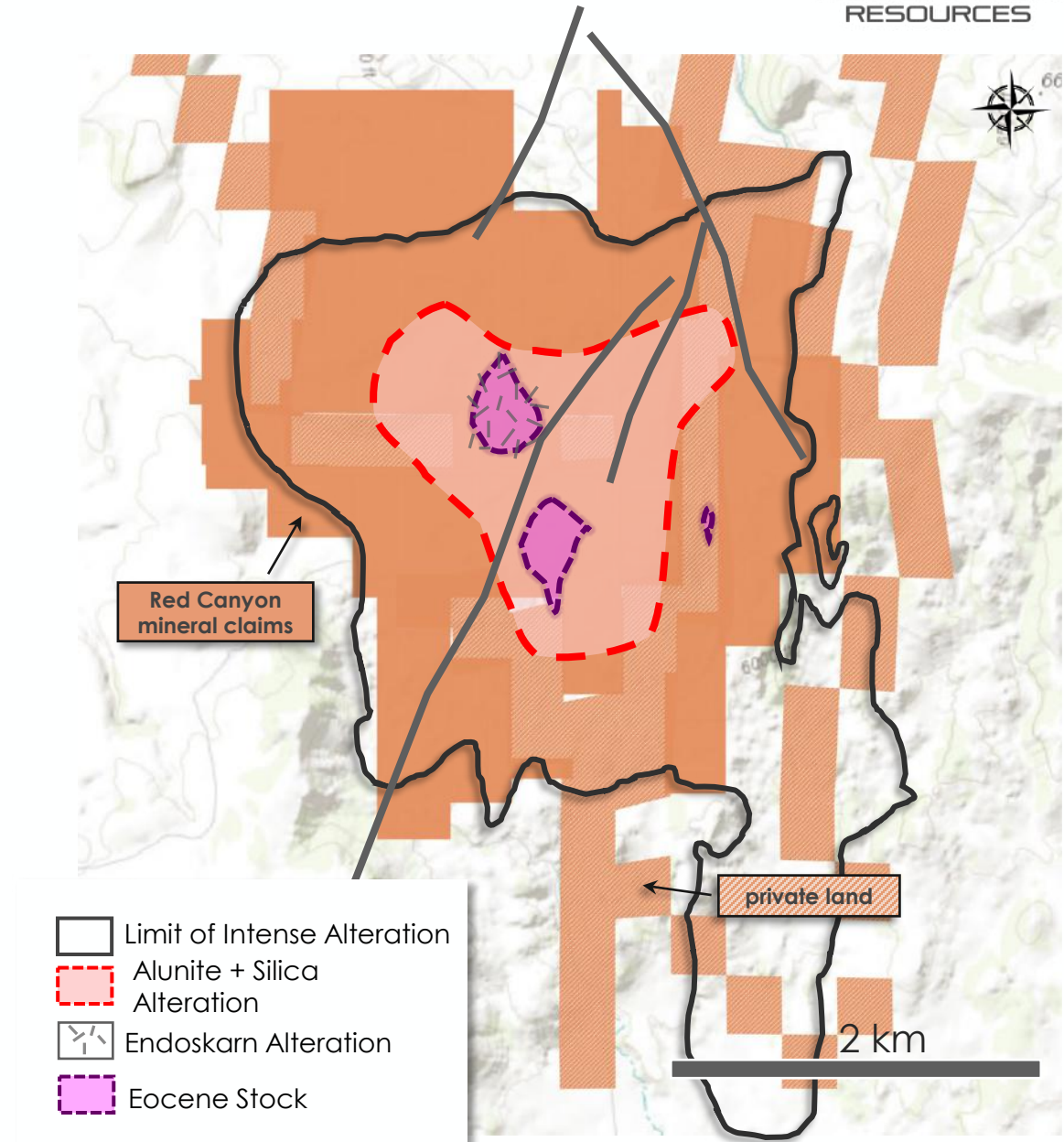
190 UNPATENTED CLAIMS	
1,589 HECTARES	100% OWNED

Testing for large Tier 1 scale copper-gold porphyry system

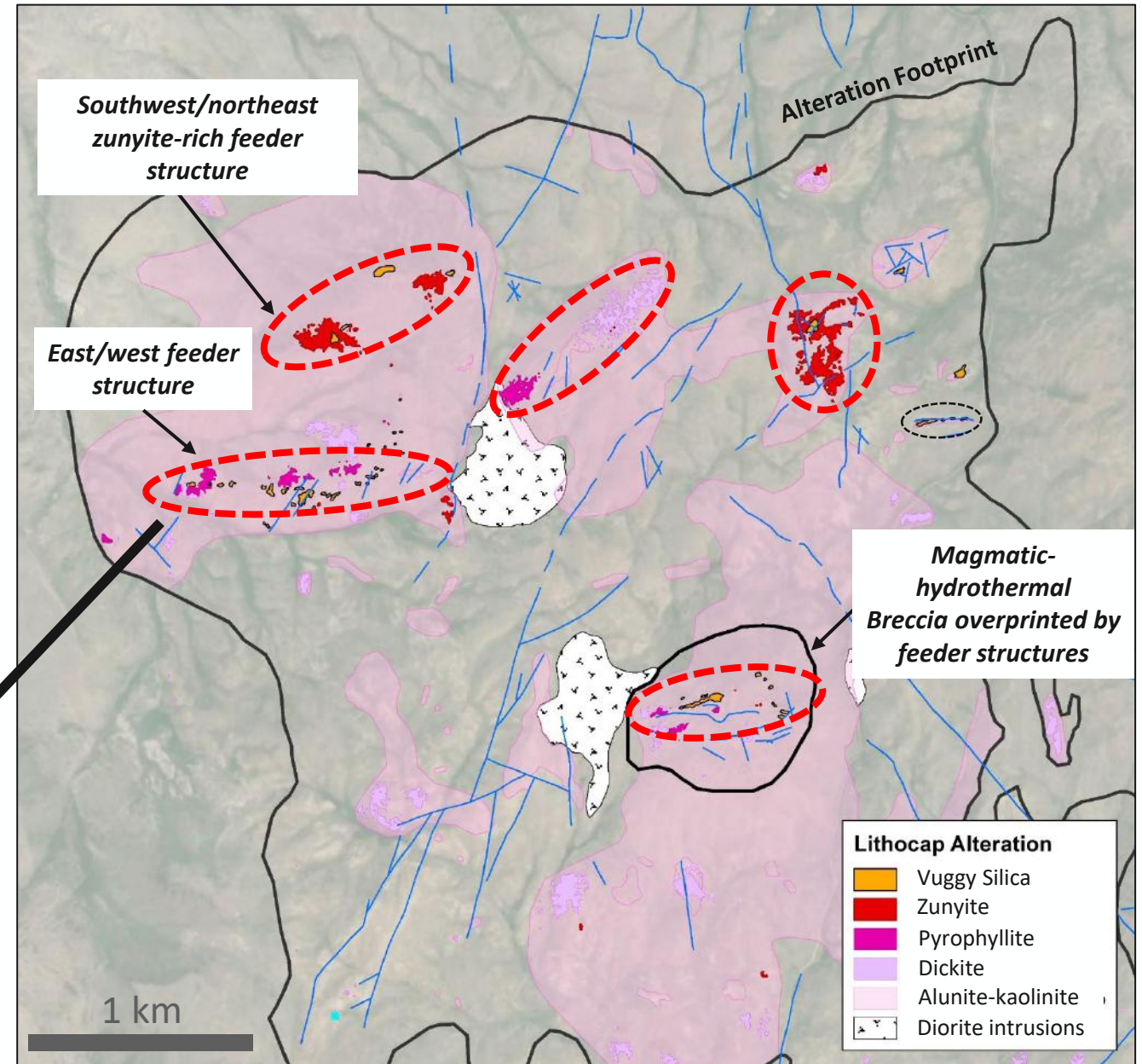
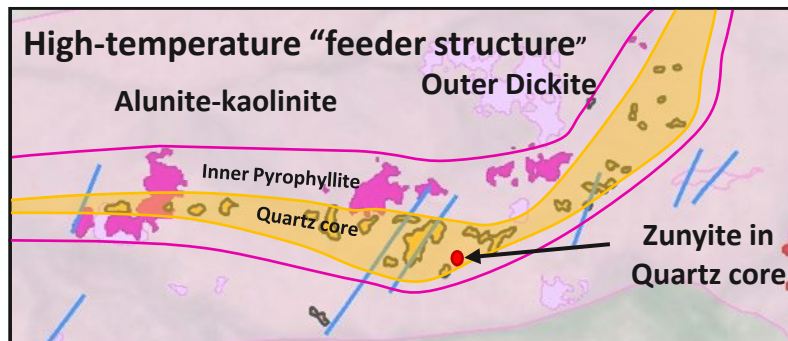
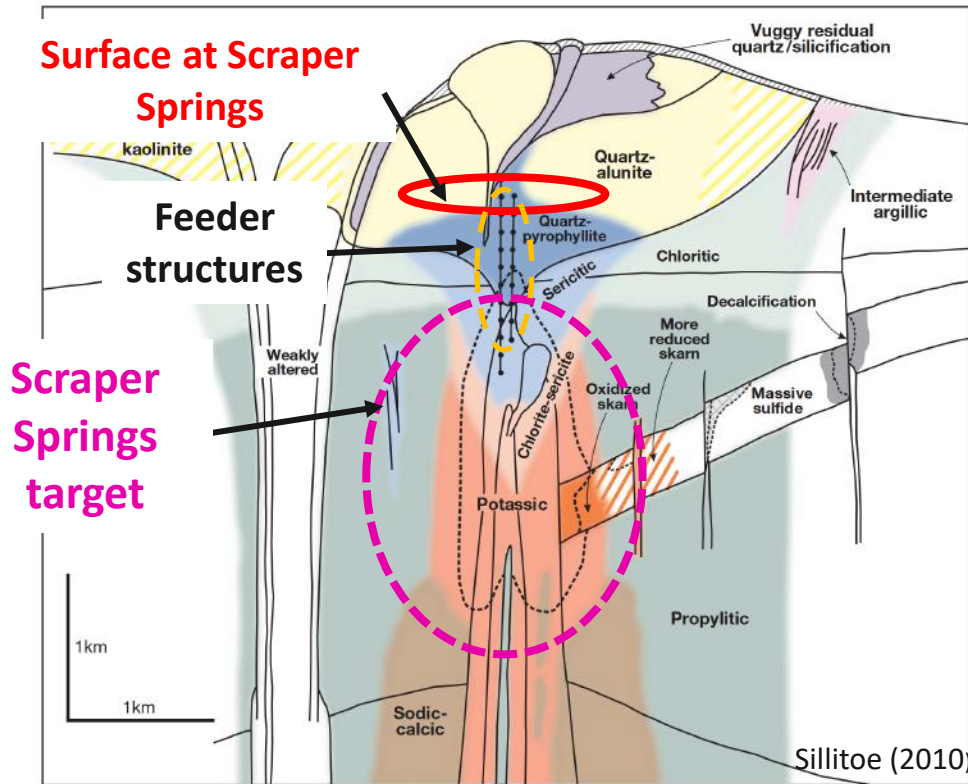
Huge alteration (~16 km²) footprint indicating large hydrothermal system centered on Bingham Canyon - age Eocene intrusions

Modeled base of Lithocap with preserved Porphyry copper centre at depth.

Drill ready



Targeting a Tier 1 Porphyry System



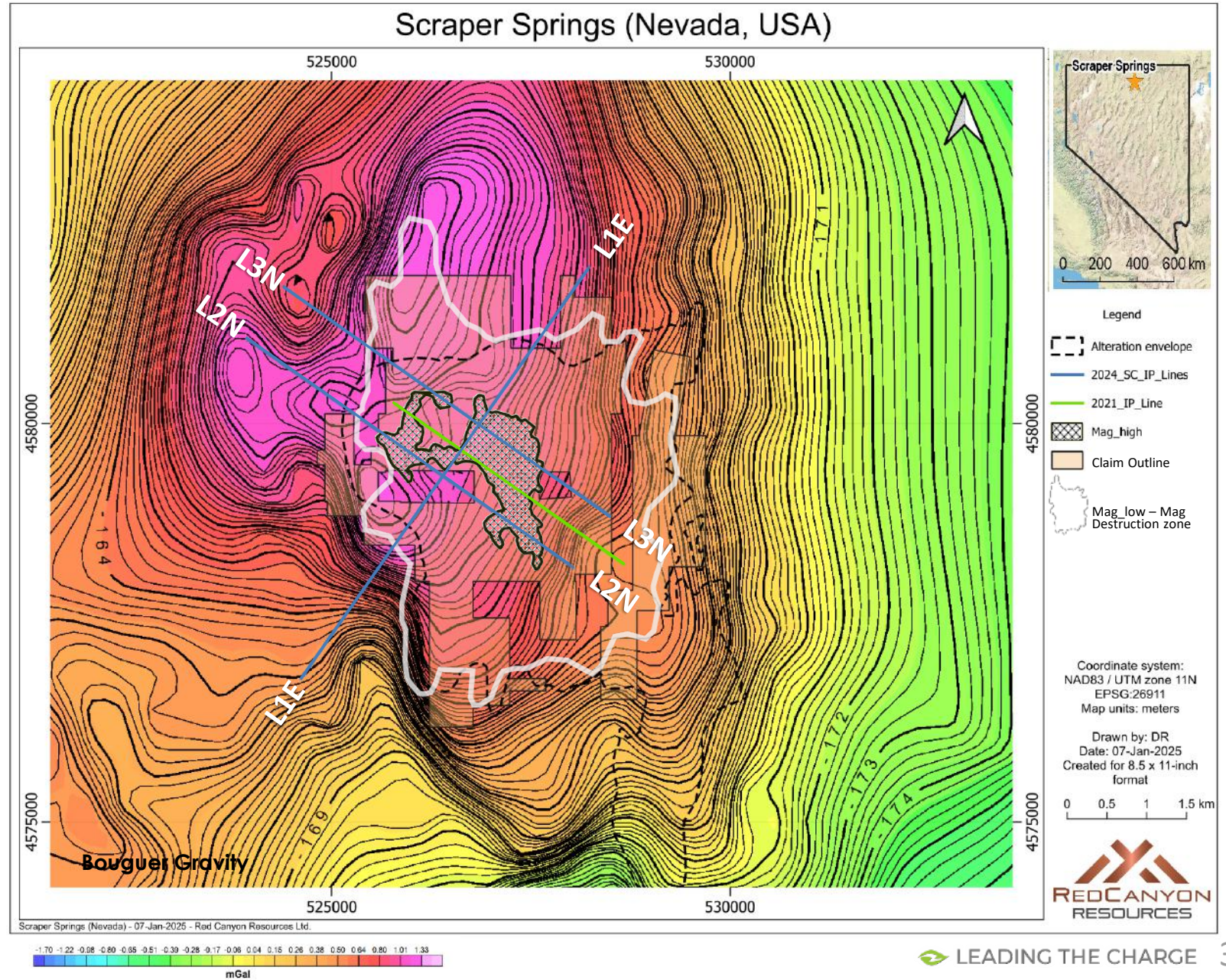
Scraper Springs Expanded Geophysics

In Q4/24 the Company completed additional deep penetrating IP geophysical lines, gravity and magnetic inversion studies.

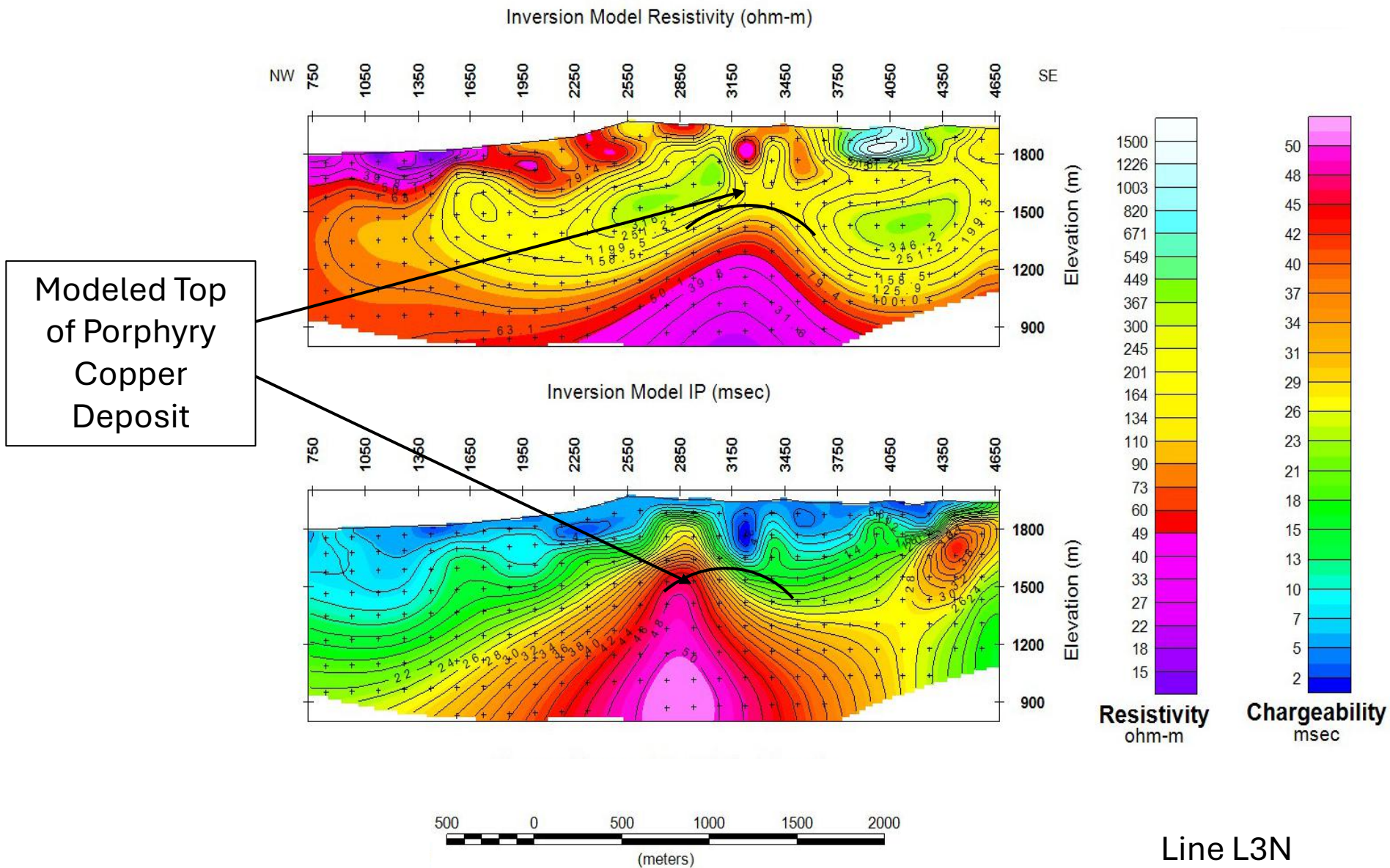
Large property scale magnetic low (hydrothermal alteration) and associate bullseye magnetic high.

10 km by 5 km north – south trending gravity high. Interpreted to be intrusive complex likely associated with causative intrusions responsible for the large hydrothermal alteration footprint at Scraper.

Expanded 3 line 7.2 km IP program identified several centres of high chargeability and corresponding conductive zones (low resistivity).



Scraper Springs L3N IP Geophysics





Scraper Springs Project



■ Investment Highlights

Exposure to Impactful Critical Metal Discovery

NEW Copper – Moly discovery at Kendal project

- ✓ Porphyry comparatives suggest strong potential for high grade core
- ✓ High margin potential given exceptional Infrastructure
- ✓ 100% owned, no underlying royalties
- ✓ Rare for small cap company – unrealized market opportunity

In Addition..

- ✓ Seven additional 100% owned Copper projects
- ✓ Inzana Tez and Camp Cu – Au targets – mineralization open and untested
- ✓ Scraper Springs – high priority target - drill ready Spring 2025

Team

Technically driven team of geoscientists & capital market experts

- ✓ History of discovery and development success

Quality Jurisdictions

Exploring North-America's top Copper districts

- ✓ Infrastructure is a first consideration
 - Improves potential for high margin discovery

Market Cycle – Small Caps and Copper

Copper market deficit to drive premium in small cap copper companies



Core talk with Senior Consulting Geologist, Dr. Abdul Razique and Chief Geoscientist, Dr. Craig Hart



Night drilling at Kendal project



Helicopter safety meeting



Core cutting at Kendal project

Contact

Wendell Zerb

Chairman & CEO

Tel: +1-604-831-0924

wzerb@redcanyonresources.com

Brennan Zerb

Investor Relations Manager

Tel: +1-778-867-5016

brennan@redcanyonresources.com